



Entry/Exit Summary Declaration

Trader Requirements and Design Document



Date: September 2011

Version: 1.6.2

Department: Revenue, Finance & Administration Business Cluster



Public

Document Control Information

01. Document reference

SD-TradersRequirementDocument-v1.6.2.doc

02. Document type

Traders' Requirements and Design Document

03. Security classification

Public

04. Synopsis

The purpose of this document is to provide all the details, applicable to the functionality related to the introduction of the exchange of summary declaration as implied by the Import Control System (ICS) and Export Control System (ECS) Phase 2. Hereinafter, this functionality is referred to as the Summary Declaration System (SDS).

The Import Control System (ICS) is a sub-system for the Automated Import System (AIS) used by the Customs Offices to control the import of items. This occurs in two main cases:

1. When the goods enter the European Union (EU) for the first time through an Office of First Entry;
2. When they enter a subsequent member state Customs Office, referred to as Office of Subsequent Entry.

This system also handles the management of Entry Summary Declarations (ENS) which are created at Offices of Lodgement before the items themselves depart for their destination(s). Finally, the system also handles diversion requests which occur when the Office of Entry declared in the ENS is unable or cannot receive the goods in transit. As of Phase 1 ICS consists of the above functionality which might be expanded later in subsequent phases.

On the other hand, the Export Control System (ECS) is a sub system for the Automated Export System (AES). Phase 1 of such system provided for the full control of the conclusion of export operations via the electronic exchange of exit information between customs export office and customs offices of exit, in particular where different member states are involved. Following this, ECS Phase 2 provides for the electronic lodging of export declarations including the security and safety data. Where a customs declaration is not required, an exit summary declaration shall be lodged.

The SDS is intended to interact with the traders directly; this will be done via specified messages. At the surface, two options of interaction will be offered to the traders; either system-to-system or a web interface.

05. Document control

Author	Change controller	Distribution controller
Custom Team	Customs Team	Customs Team
Business Clusters, Customs Team		

06. Authorisation

Issuing authority	Approval Authority	Client Approval
Signature / Date	Signature / Date	Signature / Date

07. Modification history

Version	Date	Comments
Draft 0.1	10 th April 2008	First draft version release for internal review
Draft 0.2	11 th August 2008	Second draft version for customs review
Draft 0.3	1 st October 2008	Addition of further technical details for traders connection
Draft 0.4	22 nd October 2008	Review before publication
Draft 0.5	13 th November 2008	Update XML Messages Schema
Ver 1.0	March 2009	<ul style="list-style-type: none"> - Alignment to DDNIA v4 update v007 (KEL0.18) - Description of Messages used during the interactions with Traders - Message definitions - Development Tools - Malta Customs ICS application functionality - Trader Registration Procedure - Business Rules Definition for Messages as per ICS Phase 1 Specifications - XML Schemas for Local Messages

Ver 1.1	August 2009	<ul style="list-style-type: none"> - Alignment to DDNIA v4 update v009 (KEL0.19) - Schema and message updating to the latest KEL update from the EU Commission. - Changes to the webservices to cater for the retrieving of particular messages. - Latest schema updates.
Ver 1.2	October 2009	<ul style="list-style-type: none"> - Addition of business processes pertaining to Exit Summary declaration (as per ECS Phase 2 specifications) - Arrival notification for the Entry Summary Declaration
Ver 1.3	November 2009	<ul style="list-style-type: none"> - Additional information pertaining to Exit Summary declaration (as per ECS Phase 2 specifications)
Ver 1.4	November 2009	<ul style="list-style-type: none"> - Last version for Exit Summart Declaration amendment
Ver 1.5	March 2010	<ul style="list-style-type: none"> - Correction of element name in soap request for Retrieve Arrival Notification Validation (RTMARNVL) - Removal of XSD schemas from section D
Ver 1.6	July 2010	<ul style="list-style-type: none"> - Added support for asynchronous callback services using WS-Addressing - Alignment to DDNIA ICS P1 (KEL0.21) and DDNXA ECS P2 (KEL v0.19b 009) <ul style="list-style-type: none"> ○ New TR0022 rule is applied to the MESSAGE.GOODS ITEM.PACKAGES.Number of Packages of the IE615 message. ○ New C529 rule is applied to the MESSAGE.HEADER.Transport mode at border of the IE315 and IE313 messages.
Ver 1.6.1	April 2011	<ul style="list-style-type: none"> - Amended Section 7.5 to include further detail

Ver 1.6.2	September 2011	Added support for amendment request of Exit Summary declaration
-----------	----------------	---

08. Acknowledgements

N/A

09. References

FTSS – AIS ADDENDUM 1/2006 – REV. 6.2

ICS Phase 1 Scope (v1.2)

ECS Phase 2 Scope (v2.0)

Design Document for National Import Application (DDNIA) (v4.0)

Design Document for National Export Application (DDNXA) (v2.0)

SD-TradersRequirementDocument-AppendixD (v1.6.6)

Table of Contents

01.	INTRODUCTION	1
01.1	PROJECT BACKGROUND.....	1
01.2	DOCUMENT PURPOSE.....	1
01.3	TERMINOLOGY.....	2
01.4	INTENDED AUDIENCE	3
02.	CURRENT PROCESSES.....	4
02.1.1	Overview.....	4
02.1.2	Interactions with Existing Applications.....	4
03.	PROPOSED APPLICATION OVERVIEW	6
03.1	OBJECTIVES.....	6
03.2	SCOPE OF WORK.....	6
03.2.1	Business Process Model	7
03.2.2	Legal Basis	7
03.2.3	Business Process Mapping	8
03.2.4	If the office of lodgement is different from the office of first entry	8
03.2.5	Advance Intervention Notification at the Office of First Entry	8
03.2.6	Diversion request at the Office of First Entry declared	8
03.2.7	ENS Amendment Request	9
03.2.8	Arrival Notification for ENS.....	9
03.2.9	Exit Summary Declaration	9
03.2.10	EXS Amendment Request.....	10
04.	STATEMENT OF FUNCTIONALITY	11
04.1.1	Performance Requirements.....	11
04.1.2	Data Protection Requirements	11
05.	DESIGN.....	12
05.1	SYSTEM DESIGN.....	12
05.2	SYSTEM MODULES.....	12
05.2.1	System to System web services.....	12
05.2.2	Web Application.....	27
06.	DESIGN CONSIDERATION	29
06.1	ASSUMPTIONS AND DEPENDENCIES	29
06.2	DEVELOPMENT STANDARDS	29
07.	USE OF WEB SERVICES	31
07.1	SOAP MESSAGE STRUCTURE	31
07.2	SOAP HEADERS.....	31
07.3	MESSAGE GROUP ELEMENTS.....	31
07.4	SDS WEB SERVICES	32
07.4.1	Registration of Entry Summary Declaration (ENS).....	32
07.4.2	Amendment of Entry Summary Declaration (ENS)	34
07.4.3	Diversion of Entry Summary Declaration (ENS)	36
07.4.4	Registration of Arrival Notification (ARN) for ENS.....	38
07.4.5	Registration of Exit Summary Declaration (EXS)	41
07.4.6	Amendment of Exit Summary Declaration (EXS).....	45
07.4.7	Browse for pending messages	48
07.4.8	Retrieve multiple messages	51
07.4.9	Retrieve Entry Summary Acknowledgement.....	53
07.4.10	Retrieve Entry Summary Rejection	55
07.4.11	Retrieve Amendment Acknowledgement	57
07.4.12	Retrieve Amendment Rejection.....	59
07.4.13	Retrieve Diversion Acknowledgement.....	61

07.4.14	Retrieve Diversion Rejection	63
07.4.15	Retrieve Arrival Notification Validation	65
07.4.16	Retrieve Advance Notification	67
07.4.17	Retrieve Exit Summary Acknowledgement	69
07.4.18	Retrieve ExitSummary Rejection	71
07.4.19	Retrieve Exit Control Notification	73
07.4.20	Retrieve EXS Amendment Acceptance	75
07.4.21	Retrieve EXS Amendment Rejection.....	77
07.5	ASYNCHRONOUS CALLBACK IN SDS WEB SERVICES	79
08.	TRADER REGISTRATION PROCEDURE	82
	OPRNAK: Operation Failure Notification (E_OPER_NACK)	84
	OPRNAK: Operation Failure Notification (E_OPER_NACK)	84
	BRMREQ: Browse Message Request (E_BRMS_REQ)	85
	BRMRES: Browse Message Response (E_BRMS_RES)	85
	RMMREQ: Retrieve Multiple Messages Request (E_RTMM_REQ)	86
	RMMRES: Retrieve Multiple Messages Response (E_RTMM_RES).....	86
	RTMEAC: Retrieve Entry Summary Declaration Acknowledgement (E_RETM_EAC)	87
	RTMERJ: Retrieve Entry Summary Declaration Rejection (E_RETM_ERJ)	87
	RTMAAC: Retrieve Amendment Acknowledgement (E_RETM_AAC)	88
	RTMARJ: Retrieve Amendment Rejection (E_RETM_ARJ)	88
	RTMDAC: Retrieve Diversion Acknowledgement (E_RETM_DAC)	88
	RTMDRJ: Retrieve Diversion Rejection (E_RETM_DRJ)	89
	RTMARNVL: Retrieve Arrival Notification Validation (E_RETM_ARNVAL).....	89
	RTMANT: Retrieve Advance Notification (E_RETM_ANT).....	90
	RTMEXSAAC: Retrieve Exit Summary Declaration Acceptance (E_RETM_EXSAAC)	90
	RTMEXSARJ: Retrieve Exit Summary Delcaration Amendment Rejection (E_RETM_EXSARJ)	90
	RTMEDNT: Retrieve Exit Control Notification (E_RETM_EDNT)	91

01. Introduction

01.1 Project Background

Following its application to join the EU, Malta embarked on a process to adopt and apply the full Customs Acquis. For its part, the Customs Department, should acquire both the administrative and technical capacity to be in a position to fulfil its obligations towards the other EU Member States (MS), while providing the tools that would enable the national trading community to take advantage of the facilitations and opportunities offered via available electronic services. Following this scenario the Customs Department requires MITA to develop both entry and exit summary declaration application. The Entry Summary Declaration (ENS) mainly deals with the processing of imported goods which originate from countries outside the Community destined to be delivered to the MS or internally between the MS themselves. On the other hand, the Exit Summary Declaration (EXS) deals with goods destined to leave the customs territory of the Community where a customs declaration is not required. The EXS is lodged at the competent customs office before the goods are to be brought out of the customs territory of the Community.

In this project, the Summary Declaration System (SDS), which forms an integral part of the Automated Import System (AIS) and Automated Export System (AES) is developed. The main function of SDS is to manage the messages exchanged between different Offices found in the Member States (MS) and hence providing a framework for information interchange. The information relayed between the MS' SDS applications relates mainly to Entry Summary Declarations (ENS), Exit Summary Declaration (EXS), Diversion and Common Safety and Risk Analysis Information. All this information must be extracted from the messages exchanged and saved in the MS Office's local database. Moreover if information must be sent between Offices, the SD application at the sending Office must be able to extract the required data from its database and format it into an XML message to be sent to the receiving Office.

01.2 Document Purpose

This document defines the required interactions between the SDS and the traders; which will be through XML messages. The required XML Messages as well as how the trader will be able to use these messages to interact with the system are defined in the sections below. The document is subdivided into a number of areas that should be used as follows:

- Business Flows – provides information on various scenarios that must be followed by traders depending on their integration requirements.
- Web Services – provides a detailed description of the input parameters expected by each web service that will be consumed. The WSDL of the soap request and response messages is also given.

01.3 Terminology

Term	Definition
AEO	Authorised Economic Operator
AIS	Automated Import System
AES	Automated Export System
Amendment	If any other detail in the ENS is changed (apart from the diversion)
ARN	Arrival Notification
AOC	Authorised Economic Operator – Customs simplifications
AOF	Authorised Economic Operator – Customs simplifications/ Security and Safety
AOS	Authorised Economic Operator – Security and Safety
CA	Certificate Authority
CRMS	Customs Risk Management System
Discharge	When cargo is unloaded from a means of transport at its final destination for consumption or at an intermediate port for transshipment.
Diversion	If the First Office of Entry is changed to an office not included in the itinerary list, if any, of the subsequent offices.
DTD	Document Type Definitions
ECS	Export Control System
eID	Electronic identification
ENS	Entry Summary Declaration
EXS	Exit Summary Declaration
EORI	Economic Operator Registration and Identification
Irregular Shipping	Other than Regular Shipping
ICS	Import Control System
MRN	Movement Reference Number
NA	National Administration
Regular Shipping	'Authorised Regular Shipping Service' is a service authorised by the Customs to carry Community goods or goods covered by a Customs procedure between two

	Member States.
SDS	Summary Declaration System
TIN	Trader Identification Number
Trader	Any business entity or individual working with Customs both in his/her name or as representative of any other entity or individually. Such general term included: carrier, freight forwarder, agents ground handlers etc.
Transshipment	When cargo is unloaded from a means of transport and loaded onto another
WSDL	Web Service Definition Language
XML	eXtensible Mark-up Language

01.4 Intended Audience

The primary audiences are all the development team and project managers engaged by the Service Providers and organisations that will be lodging Customs Summary Declarations through a system to system interface. This document is to be used as an integration guide that provides technical information on the integration interfaces provided by the Summary Declaration System (SDS) and is not intended to explain the involved business processes.

02. Current Processes

02.1.1 Overview

At present the Customs Department does not have an EU-based Import System which handles imports targeted for EU Member State (MS) apart for local imports destined for Malta itself. On the contrary the Export Control System (Phase 1) is satisfied by the use of an interface that interacts and converts export declarations inputted from the Malta Export System (MEX). This declaration is then submitted to an application provided by the European Commission (ECN Plus), which handles entirely export scenarios and the interaction with other member states.

Entry Summary Declaration as a system is a new concept introduced to facilitate trading and more control over how goods move across the MS. The present local system manages import requests using another application which is enough to cater for local imports only. Risk analysis is done separately by Customs Personnel using only criteria concerning Malta itself. In the case of Exit Summary declaration, the system is required where no customs declaration is required and goods for export fall under safety and security category.

02.1.2 Interactions with Existing Applications

As highlighted earlier, the scope of this document is to highlight the interactions between the SDS and the traders. The interactions required are to pass the defined XML Messages to and from the different systems.

Two modes of interaction are proposed for this scenario; system-to-system and human-to-system interactions. These interactions will be implemented as follows:

- **Web Services:** This interaction is targeted for system-to-system integration, offering an automated integration between the traders' systems and the SDS. This will be done through web services that will be offered by the SD systems. Both ends will be then able to communicate in an automated way via these web services.
- **Web Interface:** For smaller scale traders or those that would prefer not to integrate their system with the SDS, a web portal over the web services will be created. The traders will be then able to submit or retrieve the required messages via this portal. Through this portal the traders will be able to submit the required information via a normal web interface the portal will then process this information and create the relevant message which is then submitted to the SDS system.

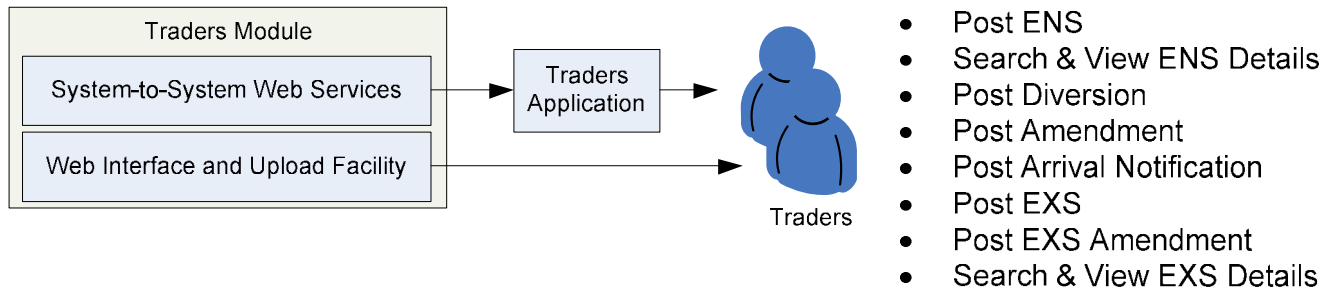


Figure 1: ICS interactions with Traders

03. Proposed Application Overview

03.1 Objectives

The application will consist of the following main business processes,

- ⇒ Process ENS at Office of Lodgement
- ⇒ Process ENS at Office of First Entry
- ⇒ Process ENS at Office of Subsequent Entry
- ⇒ Process ENS Amendment Request at First Entry
- ⇒ Process international diversion at Office of First Entry
- ⇒ Presentation at Actual Office of First Entry
- ⇒ Presentation at Actual Office of Subsequent Entry
- ⇒ Process EXS at Office of Exit
- ⇒ Process EXS Amendment Request at Office of Exit

The first seven processes listed above, pertain to the Import Control System (ICS) Phase 1 whilst the last two remaining processes are part of Export Control System (ECS) Phase 2. These processes will be fully or partly automated: Such automation will include the:

- ⇒ Receiving and sending of data from and to the economic operator;
- ⇒ Receiving and sending of data from and to the various customs offices;
- ⇒ The viewing of data by Malta Customs officers;

Where applicable the XML message structures to be adopted will be as specified in the ICS/ECS EU documentation but in some cases locally defined messages will be used.

03.2 Scope of Work

The objectives of the Summary Declaration project are:

- ⇒ The automation of the entry summary declaration for imports in the EU and the relative communication with the trader;
- ⇒ The automation of the exit summary declaration for exports out of the EU and the relative communication with the trader;
- ⇒ The communication between the various Customs-offices involved
- ⇒ The storing and forwarding of risk analysis as part of the SDS messaging.
- ⇒ Build interface to the Customs Risk Management System.
- ⇒ Interface Entry/Exit Summary Declaration with Authorised Economic Operator (AEO) and Economic Operator's Registration and Identification (EORI)

03.2.1 Business Process Model

03.2.1.1 Entry Summary Declaration

The process starts with the trader lodging an ENS, submitting the ENS to the Office of First Entry via an IE315 message. After successful validation of the ENS, the declaration is registered and an MRN is automatically generated. The allocated MRN is communicated back to the Trader lodging the ENS via an IE328 message and to the declared Trader at Entry (Carrier) if different from the Trader lodging the ENS or if connected to the ICS in that Member State (MS). When the ENS data is received at the Office of First Entry, common safety and security risk analysis is performed for all the goods declared in the ENS. For the core flow process it is assumed that, risk was identified and also subsequent Offices are involved. In this case, the Office of First Entry forwards the appropriate ENS data including the relevant safety and security risk analysis results to all Offices of Subsequent Entry declared in the ENS via an IE319 message. The forwarded data is received by the Office of Subsequent Entry and registered in that MS.

The entry carrier notifies about the arrival of the goods by means of an arrival notification IE347 message. The arrival notification should make a reference to the ENS(s) previously lodged for the purpose of safety and security.

For the goods to be unloaded at the Office of First Entry, national risk analysis is performed on the basis of national regulations and requirements. The national risk analysis results are not communicated to the Offices of Subsequent Entry. However the Offices of Subsequent Entry receive an extract of the appropriate ENS data after common safety and security risk is identified at the Office of First Entry.

03.2.1.2 Exit Summary Declaration

The business process of the Exit Summary Declaration (EXS) starts with a trader submitting a declaration electronically via the IE615 message. The office of lodgement accepts and validates such declaration. Locally such office is represented by the same Office of Exit. If the EXS is invalid, the office of lodgement notifies the trader about the reason of rejection. Otherwise the SDS registers the declaration and the allocated MRN is communicated to trader via IE628. Aftermath the EXS undergoes an automatic risk analysis, related to safety and security aspects. In case the risk result is positive, the trader is notified with an IE561 about the control decision.

03.2.2 Legal Basis

The Summary Declaration System includes strictly what is needed to implement the requirements arising from the so-called 'security amendment' to the Community Customs Code covered by Regulation (EC) No 648/2005 and 1875/2006. These regulations amend the Implementing Provisions, and are based on the processing of the Exit Summary Declaration (EXS) at the actual office of exit and the processing of the Entry Summary Declarations (ENS) at

- office of Lodgement;
- office of First Entry (including international diversion);
- any Office of Subsequent Entry, whether or not declared in the ENS

03.2.3 Business Process Mapping

We will now map the business process with the relevant Trader messages, to describe how the interaction with the trader will occur.

1. Trader lodges ENS to office of first entry (via IE315)
2. In case there is a need for the system to reject the ENS due to the occurrence of one or more functional, then the system shall respond with an IE316 indicating the functional error(s).
3. Declaration is registered and MRN generated (automatically), the MRN is then communicated to trader lodging the ENS (via IE328) and to Trader at Entry.
4. Common Safety and Security Risk Analysis is performed for all goods at office of first entry
5. If risk is identified office of first entry forwards the ENS data and 'safety and security risk analysis' results to all subsequent offices.
6. For goods to be unloaded at office of first entry 'National Risk Analysis' is performed

03.2.4 If the office of lodgement is different from the office of first entry

The Risk Analysis may be performed at the office of lodgement. If risk is detected the first entry office is then informed. Notwithstanding the risk analysis result received from the Office of lodgement, the first office may perform the risk analysis again. The MRN is communicated by the office of lodgement instead of the office of first entry and the latter is informed about it.

If the office of lodgement cannot communicate the MRN to the Trader at Entry, the office of first entry communicates the MRN (via IE328).

03.2.5 Advance Intervention Notification at the Office of First Entry

If after the risk analysis revealed a no load decision the Office of First Entry (OFE) notifies the business actors (Trader Lodging the ENS & Trader at Entry) via Advanced Intervention Notification (via IE351). If other customs interventions / controls are to be performed, OFE may decide to inform the trader the ENS in advance (via IE351). Office of First Entry forwards the Risk Analysis with ENS data to Offices of Subsequent Entry (via IE319).

If the ENS is submitted to an Office of Lodgement instead of at the Office of First Entry, the Representative of the trader lodging the ENS is also notified if he is declared in the ENS or is the sender of an amendment request. (via IE351).

03.2.6 Diversion request at the Office of First Entry declared

1. Trader requesting an international diversion sends a diversion request to OFE (via IE323).

2. If the diversion request is valid the trader requesting diversion is acknowledged with an IE325, and the system proceeds by forwarding the details of the involved summary declaration(s) to the Actual Office of First Entry (via IE303).
3. Else when not valid, the system responds with an IE324 message indicating the functional error(s).

03.2.7 ENS Amendment Request

1. Trader lodging ENS informs the Office of First Entry about the ENS amendment (via IE313)
2. Office of First Entry starts validation, checks if amendment is on a registered declaration
3. Office of First Entry makes further checks to ensure it can accept the changes. The amendment is refused if:
 - The Trader has been informed that the Office of first Entry intend to examine the goods;
 - The Customs Authorities have established that the particulars in question are incorrect;
 - The Office of first Entry has accepted the corresponding presented arrival notification and allowed the removal of the goods.
4. If amendment is valid, Office of First Entry informs the Trader lodging the ENS and the trader at Entry the amendment is accepted (via IE304). In case there is a need for the system to reject the amendment, then the system shall respond with an IE305 indicate the functional error(s).

03.2.8 Arrival Notification for ENS

1. The presentation process at the actual office of first entry is initiated upon the receipt of an arrival notification. The incoming message IE347 should reference the ENS(s), which must have been previously lodged, for the purpose of safety and security or by entry key.
2. If the arrival notification is valid, the arrival registration is communicated to the trader via the validation response message (IE348).
3. If the arrival notification is invalid, the rejection is communicated to the trader via the validation response message (IE348).

03.2.9 Exit Summary Declaration

1. The trader lodges a new Exit Summary Declaration (IE615).
2. In case of invalid summary declaration, SDS rejects it and notifies (IE616) the trader about the reasons of rejection.
3. If the declaration is valid, SDS registers the declaration and the allocated MRN is communicated (IE628) to the trader.
4. Soon after registration, the exit summary declaration undergoes an automatic risk analyses, related to safety and security aspects. In case the risk result is positive, the trader is notified (IE561) about the control decision.

03.2.10 EXS Amendment Request

1. Trader lodging Exit Summary Declaration requests its amendment to the Office of Exit (via IE613). An amendment request may concern the creation, modification or deletion of data within an Exit summary declaration (e.g. adding, modifying or deleting goods items in a Exit summary declaration).
2. Office of Exit conducts validation, checks if amendment is on a registered declaration
3. Office of Exit makes further checks to ensure it can accept the changes. The amendment is refused if the trader has been previously notified about risk control via IE56.
4. If amendment is valid, Office of Exit informs the Trader lodging the request that the amendment has been accepted (via IE604). Otherwise if not valid, the amendment rejection is communicated, via an IE605.

04. Statement of Functionality

04.1.1 Performance Requirements

High performance is required due to the large amount of declarations being received as well as sent through CCN/CSI gateway. The system should be fast enough to cater the clients' business requirements especially in the transmission of data.

04.1.2 Data Protection Requirements

The system will ensure that within its operation it will abide to Data Protection law and Regulations.

05. Design

05.1 System Design

The trader's access to the Summary Declaration System will be available in one of two mechanisms, mainly:

- **System to system:** A number of web services will be available for third parties to connect their application to the Malta Customs systems. These web services will enable the sending of both locally defined ICS Phase 1 and ECS Phase 2 – EXS messages and messages defined by the EU Commission in the ICS Phase 1 specifications and ECS Phase 2 – Security and Safety Aspects.
- **Web application:** The Malta Customs will provide traders, opting to connect to the Entry/Exit Summary Declaration System via this option, a web application enabling the particular traders to register and forward the entry/exit summary declaration to Malta Customs, receive replies and check status on each particular summary declaration. As regards to entry summary declarations the trader can register amendments and diversions.

05.2 System Modules

05.2.1 System to System web services

The web services that will be available are:

- **Register ENS Operation:** Will be used for the registration of a new entry summary declaration. As a reply the web service will return the confirmation of arrival message or the error notification message.
 - o Input: CC315A
 - o Output: OPRACK (ARRIVAL)
 - o Fault: OPRNAK
- **Amend ENS Operation:** Will be used for the posting of an entry summary declaration amendment. As a reply the web service will return the confirmation of arrival message or the error notification message.
 - o Input: CC313A
 - o Output: OPRACK (ARRIVAL)
 - o Fault: OPRNAK
- **Divert ENS Operation.** Will be used for the posting of an entry summary declaration diversion. As a reply the web service will return the confirmation of arrival message or the error notification message.
 - o Input: CC323A

- Output: OPRACK (ARRIVAL)
 - Fault: OPRNAK
- **Register ARN Operation:** Will be used for the registration of a new arrival notification. As a reply the web service will return the confirmation of arrival message or the error notification message.
 - Input: CC347A
 - Output: OPRACK (ARRIVAL)
 - Fault: OPRNAK
- **Register EXS Operation:** Will be used for the registration of a new Exit summary declaration. As a reply the web service will return the confirmation of arrival message or the error notification message.
 - Input: CC615A
 - Output: OPRACK (ARRIVAL)
 - Fault: OPRNAK
- **Amend EXS Operation:** Will be used for the posting of an exit summary declaration amendment. As a reply the web service will return the confirmation of arrival message or the error notification message.
 - Input: CC613A
 - Output: OPRACK (ARRIVAL)
 - Fault: OPRNAK
- **Browse Messages Operation.** Will be used to retrieve the list of pending messages. As a reply the web service will return the list of messages each with a unique message identification number that are pending or the error notification message.
 - Input: BRMREQ
 - Output: BRMRES
 - Fault: OPRNAK
- **Retrieve Messages Operation.** Will be used to retrieve the actual message detail of the message list returned through the BRMRES (above). As a reply the web service will return the particular messages or the error notification message.
 - Input: RMMREQ
 - Output: RMMRES
 - Fault: OPRNAK

The following web services are an alternative for the 'Retrieve Message Operation' whereby a solution provider can opt to retrieve messages individually by type instead of retrieving all types of messages together.

- **Retrieve ENS Acknowledgement.** Will be used to retrieve an ENS Acknowledgement message with a message identification returned through the BRMRES (above). As a reply the web service will return the specified CC328A message or an error notification message.
 - o Input: RTMEAC
 - o Output: CC328A
 - o Fault: OPRNAK

- **Retrieve ENS Rejection.** Will be used to retrieve an ENS Rejection message with a message identification returned through the BRMRES (above). As a reply the web service will return the specified CC316A message or an error notification message.
 - o Input: RTMERJ
 - o Output: CC316A
 - o Fault: OPRNAK

- **Retrieve Amend Acknowledgement.** Will be used to retrieve an Amendment Acknowledgement message with a message identification returned through the BRMRES (above). As a reply the web service will return the specified CC304A message or an error notification message.
 - o Input: RTMAAC
 - o Output: CC304A
 - o Fault: OPRNAK

- **Retrieve Amend Rejection.** Will be used to retrieve an Amendment Rejection message with a message identification returned through the BRMRES (above). As a reply the web service will return the specified CC305A message or an error notification message.
 - o Input: RTMARJ
 - o Output: CC305A
 - o Fault: OPRNAK

- **Retrieve Divert Acknowledgement.** Will be used to retrieve a Diversion Acknowledgement message with a message identification returned through the BRMRES (above). As a reply the web service will return the specified CC325A message or an error notification message.
 - o Input: RTMDAC
 - o Output: CC325A
 - o Fault: OPRNAK

- **Retrieve Divert Rejection.** Will be used to retrieve a Diversion Rejection message with a message identification returned through the BRMRES (above). As a reply the web service will return the specified CC324A message or an error notification message.
 - o Input: RTMDRJ
 - o Output: CC324A
 - o Fault: OPRNAK

- **Retrieve ARN Validation.** Will be used to retrieve an ARN Validation message with a message identification returned through the BRMRES (above). As a reply the web service will return the specified CC628A message or an error notification message.
 - o Input: RTMARNVL
 - o Output: CC348A
 - o Fault: OPRNAK

- **Retrieve Advance Notification.** Will be used to retrieve an Advanced Notification message with a message identification returned through the BRMRES (above). As a reply the web service will return the specified CC351A message or an error notification message.
 - o Input: RTMANT
 - o Output: CC351A
 - o Fault: OPRNAK

- **Retrieve EXS Acknowledgement.** Will be used to retrieve an EXS Acknowledgement message with a message identification returned through the BRMRES (above). As a reply the web service will return the specified CC628A message or an error notification message.
 - o Input: RTMEXSAC
 - o Output: CC628A
 - o Fault: OPRNAK

- **Retrieve EXS Rejection.** Will be used to retrieve an EXS Rejection message with a message identification returned through the BRMRES (above). As a reply the web service will return the specified CC616A message or an error notification message.
 - o Input: RTMEXSRJ
 - o Output: CC616A
 - o Fault: OPRNAK

- **Retrieve Exit Control Notification.** Will be used to retrieve an Exit Control Decision Notification message with a message identification returned through the BRMRES (above).

As a reply the web service will return the specified CC561A message or an error notification message.

- Input: RTMEDNT
 - Output: CC561A
 - Fault: OPRNAK
- **Retrieve EXS Amend Acceptance.** Will be used to retrieve an Amendment Acknowledgement message with a message identification returned through the BRMRES (above). As a reply the web service will return the specified CC304A message or an error notification message.
- Input: RTMEXSAAC
 - Output: CC604A
 - Fault: OPRNAK
- **Retrieve EXS Amend Rejection.** Will be used to retrieve an Amendment Rejection message with a message identification returned through the BRMRES (above). As a reply the web service will return the specified CC605A message or an error notification message.
- Input: RTMEXSARJ
 - Output: CC605A
 - Fault: OPRNAK

05.2.1.1 Web Services Business flows

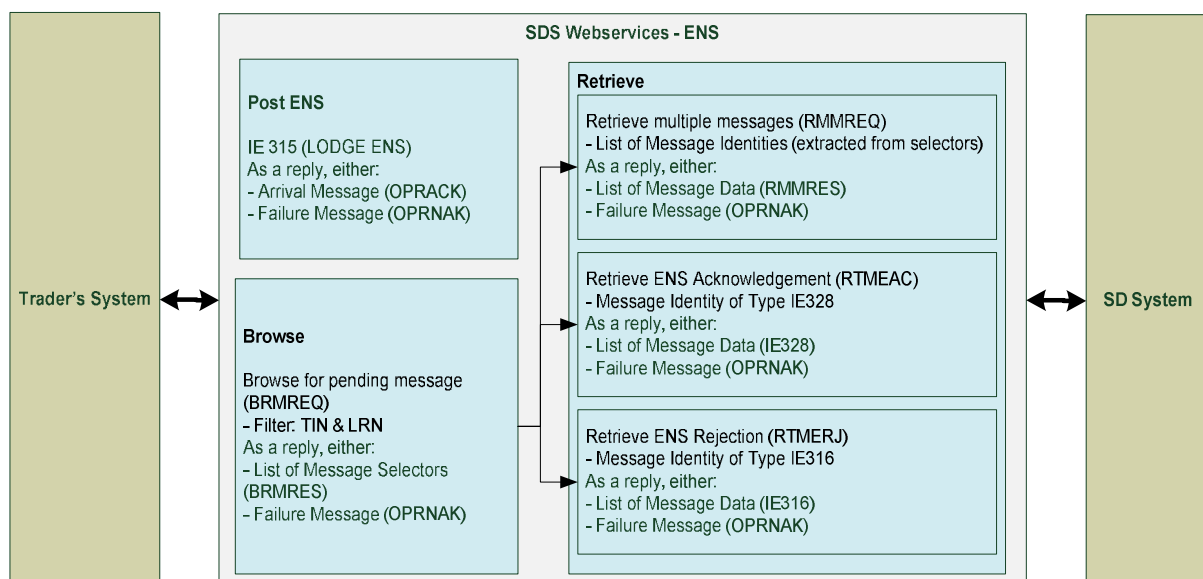


Figure 2: Functionality to submit an ENS

When the trader submits the IE315 message, it is first validated against the right schema. If the message is valid, then an Arrival message (OPRACK) is sent back as a reply to the trader. Otherwise a message containing a list of error messages (OPRNAK) will be sent.

If the message is structurally correct, the data is then extracted. If the message extracts the correct data, then a message of DELIVERY (OPRACK) is sent to the web service queue. Otherwise a message containing an error message will be sent (OPRNAK). Once extracted, the data is validated against the business rules and condition, and saved. If the message submitted is valid, then an ENS acknowledgment (CC328A) is sent to the web service queue. If on the other hand, the message submitted is not valid, then an ENS rejection (CC316A) is sent to the web service queue.

The messages sent from the SD system to the web services, will be contained in a message queue, until they are retrieved or expired. The process of retrieving messages from the web services message queue is as follow:

- First browse for pending messages, which sends a list of message summaries.
- Then retrieve the message data using the message selectors' (extracted from each message summary) data from the browse request.

To browse pending messages, a BRMREQ request must be sent to the web services, with a number of specific filter parameters. If no filter parameters are present, then a search will be performed based on the message sender. A BRMRES response, will be receive, which contains a list of message summaries, where each message summary contains a message selector and a message info where the latter is the information about the pending message which is waiting in the queue. Using message selectors extracted from the summaries, a retrieve messages request is constructed, and requested to the web services, which the latter sends back the message data requested. Once retrieved from the web services, the messages are removed from the queue and are archived.

There exist two types of methods, to retrieve messages:

- Retrieve Multiple Messages
- Retrieve Single Messages depending on the message type.

When it comes to retrieving multiple messages, the response is a message, containing the message selector and the message data. The type of the message data is unknown, since it can be of any type. On the other hand, when retrieving single messages, the appropriate web service must be called depending on the message type found in the message info. For example, if the message type is CC328A, then a request to retrieve an ENS Acknowledgement is needed to retrieve this message or if the message type is CC316A, then a request to retrieve an ENS Rejection is needed.

This mechanism is also shared within the other business flows as illustrated in the next figures.

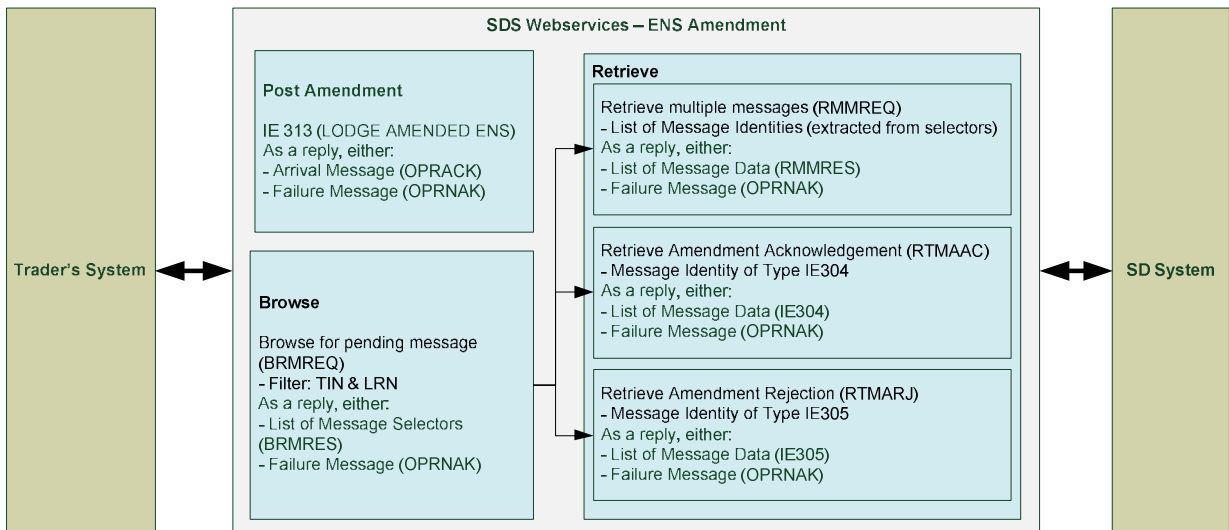


Figure 3: Functionality to submit an Amendment for Entry Summary Declaration

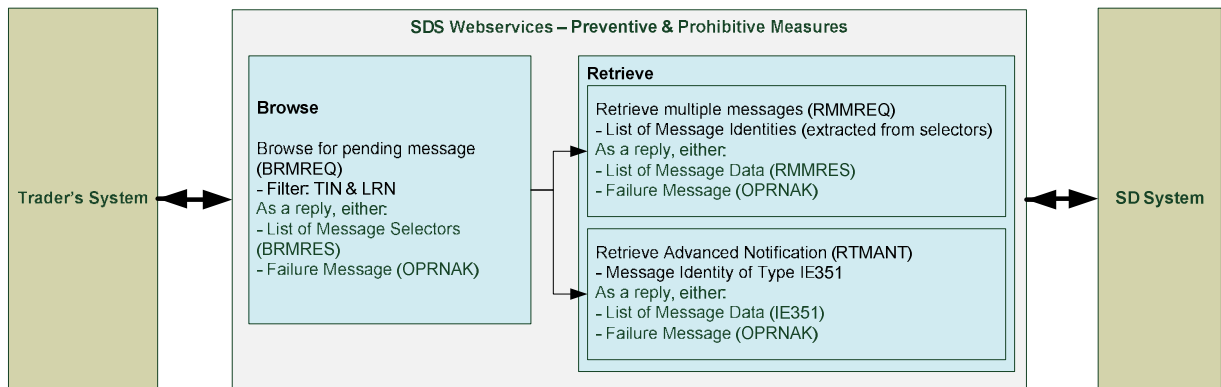


Figure 4: Functionality to Retrieve the Advanced Notification messages

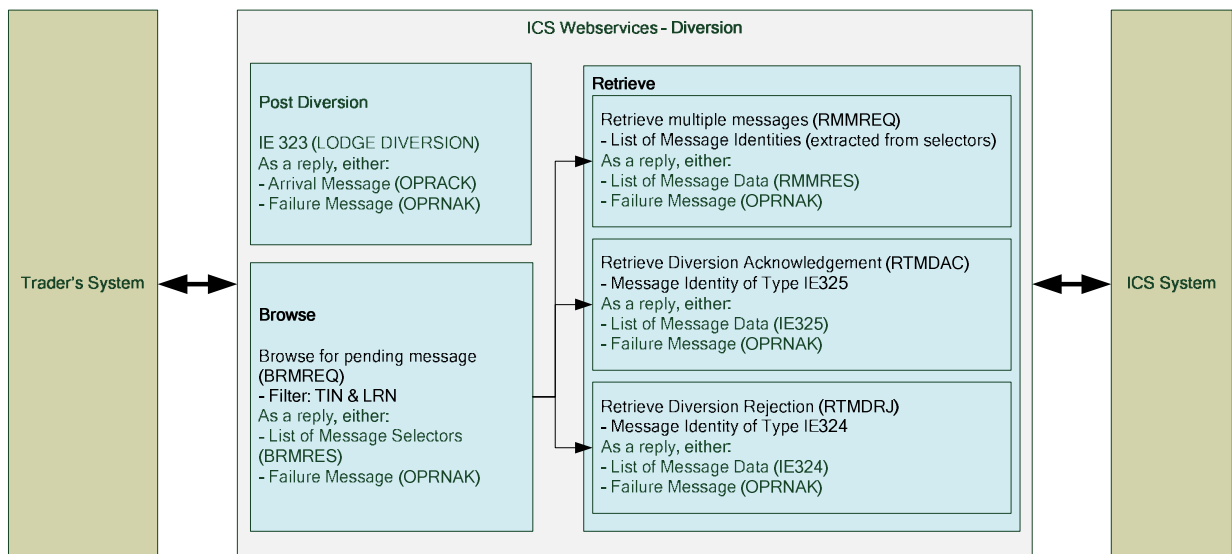


Figure 5: Functionality to submit a Diversion

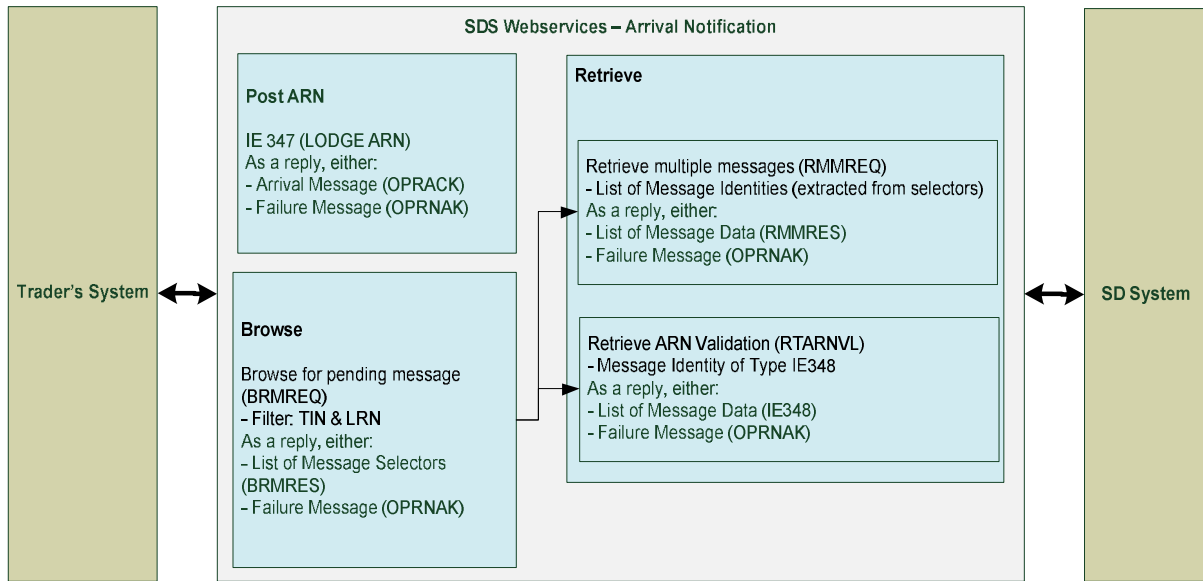


Figure 6: Functionality to submit an Arrival Notification

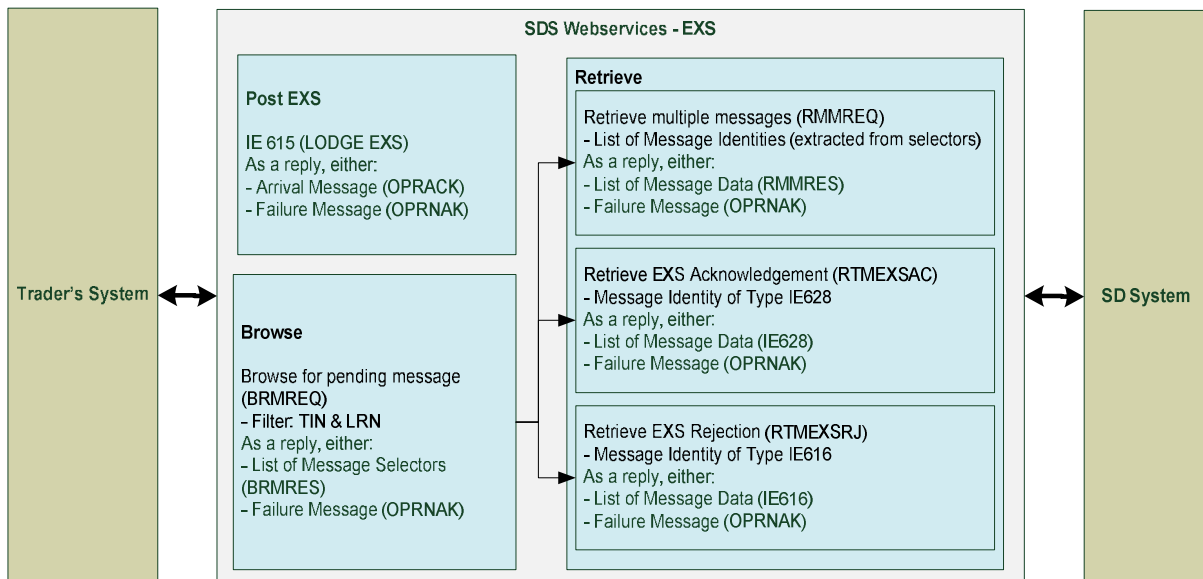


Figure 7: Functionality to submit an EXS

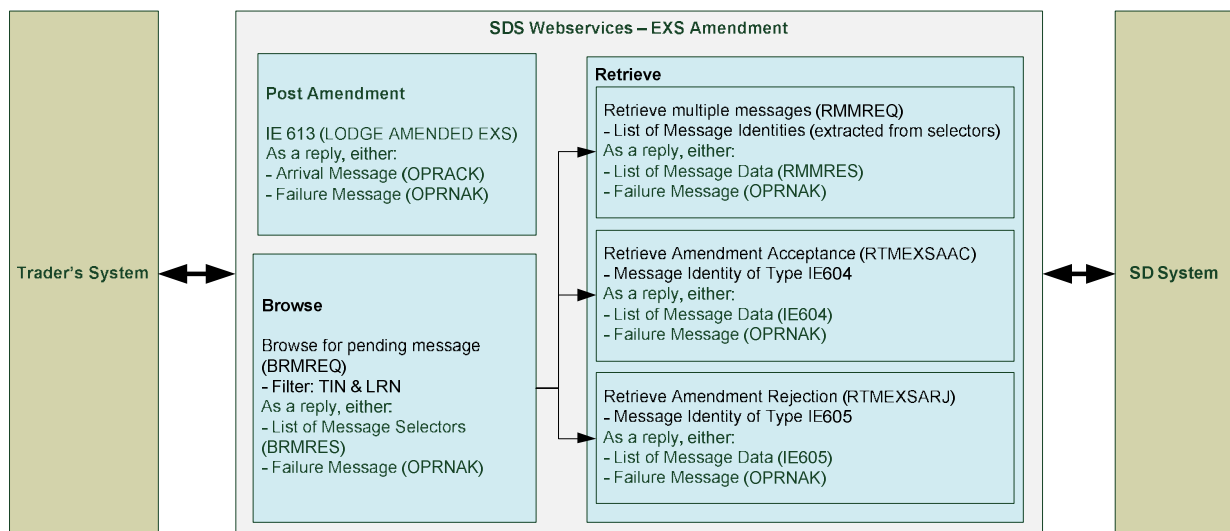


Figure 8: Functionality to submit an EXS Amendment

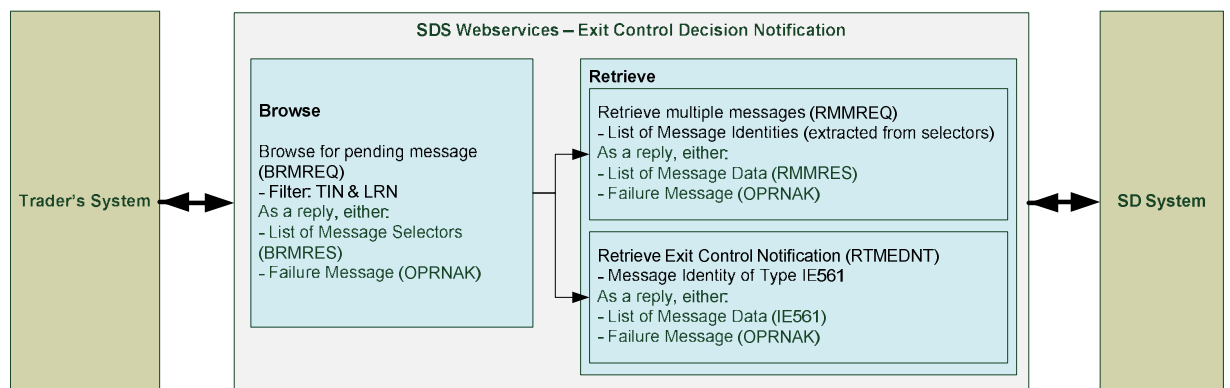


Figure 9: Functionality to Retrieve the Exit Decision Control Notification messages

The process of retrieving the advance risk notifications and decision control messages is the same as when retrieving other messages. First, there must be a browse request, which in return sends back a list of message summaries each containing a unique message selector. Extracting both message selectors and message type from the message info, then a retrieval request must be send, either through retrieve multiple messages or retrieve single messages.

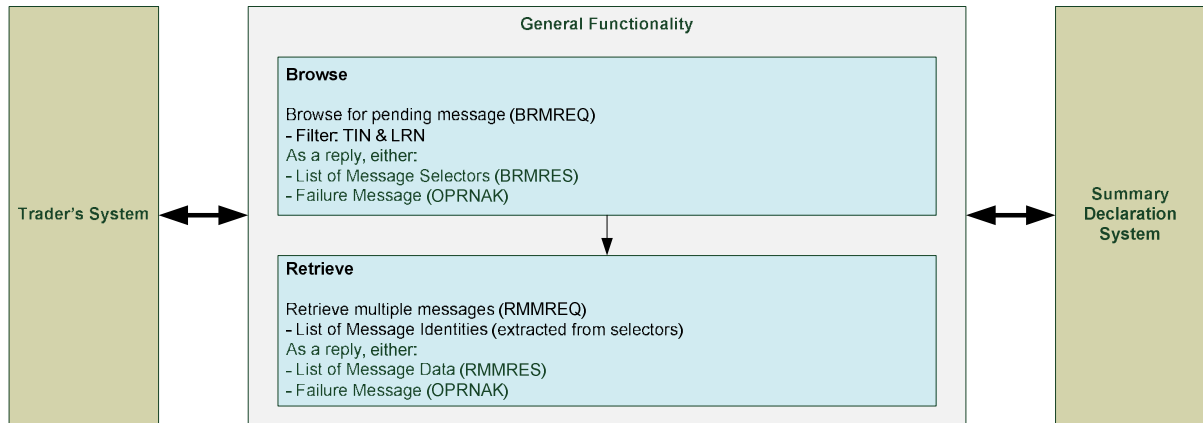


Figure 10: Functionality to retrieve other information

05.2.1.2 Description of Messages used during the interactions with Traders

Messages as per ICS Phase 1 Specifications

IE	Name	Reference	Previous EBP	Next EBP	Description	Trader Action
IE304	Entry Summary Declaration amendment Accepted	E_ENS_AAC	CO1B0600(SUM) CO1B0650(SUM)	CO1B0520(SUM)	XML sent to trader/representative to indicate that an amendment was accepted.	Receive
IE305	Entry Summary declaration amendment rejection	E_ENS_ARJ	CO1B0600(SUM) CO1B0650(SUM)	No EBP, but Trader informed: Amendment invalid	XML sent to trader to indicate that an amendment was rejected.	Receive
IE313	Entry Summary Declaration amendment	E_ENS_AMD	Amendment of ENS	CO1B0600(SUM) CO1B0650(SUM)	XML message received at Office of First Entry which is used to carry on amendments on pre-existing ENS.	Send
IE315	Entry Summary Declaration	E_ENS_DAT	Lodging ENS	CO1B0501(SUM)	XML message which contains the ENS lodged by the Trader performing Lodgement at the Office of Lodgement/Office of First Entry	Send
IE316	Entry Summary Declaration rejected	E_ENS_REJ	CO1B0501	No EBP, but trader notified of ENS rejection	XML sent by SDS to Trader performing Lodgement to declare the ENS sent in IE315 as invalid. Contains rejection reason information.	Receive

IE323	Diversion request Import	E_DIV_REQ	Trader notifying diversion	CO1D0010(SUM)	XML used by Trader to notify Office of First Entry of a diversion.	Send
IE324	Diversion request Rejected	E_DIV_REJ	CO1D0010(SUM)	No EBP, but trader notified of diversion rejection	XML sent by Office of First Entry to inform Trader that the diversion request was rejected.	Receive
IE325	Diversion request Acknowledgement	E_DIV_ACK	CO1D0010(SUM)	No EBP, but trader notified of that diversion request is accepted	XML sent by Office of First Entry to inform Trader that the diversion request was accepted.	Receive
IE328	Entry Summary Declaration Acknowledgement	E_ENS_ACK	CO1A0501(SUM) CO1B0501(SUM) CO1B0510(SUM)	No EBP, trader receives MRN, and ENS forwarded for risk analysis	XML sent by SDS to Trader performing Lodgement to declare the ENS sent in IE315 as valid. Contains allocation information.	Receive
IE351	Advanced Intervention notification	E_AIV_NOT	CO1B0520	No EBP, Trader notification preventive measures	Notification of intervention by customs officials to traders	Receive
IE347	Arrival Notification	E_ARN_ENT	Lodge Arrival Notification	C03A0102	XML used by trader to initiate the presentation process upon arrival, for the goods to be unloaded	Send
IE348	Arrival Notification Validation	E_ARN_VAL	C03A0102	C03A0625(SUM) when valid	If arrival notification is valid the registration is communicated to the Trader, else if invalid the rejection is communicated	Receive

Messages as per ECS Phase 2 Specifications

IE	Name	Reference	Previous EBP	Next EBP	Description	Trader Action
IE561	Exit control decision notification	E_EXT_CTR	CO020600	No EBP, Trader notified about control decision	XML sent to trader to inform about control decision	Receive
IE604	Exit Summary Declaration Acceptance	E_EXS_AAC	CO020500(SUM)		XML sent to trader to indicate that an amendment was accepted	Receive
IE605	Exit Summary Declaration Rejection	E_EXS_ARJ	CO020500(SUM)		XML sent to trader to indicate that an amendment was rejected.	Receive
IE613	Exit Summary Declaration Amendment	E_EXS_AMD	Amendment of EXS		XML message received at declared Office of Exit which is used to carry on amendments on pre-existing EXS	Send
IE615	Exit Summary Declaration	E_EXS_DAT	Lodging EXS	CO1A0501(SUM)	XML message which contains the EXS lodged by the Trader performing Lodgement at the Office of Exit	Send
IE616	Exit Summary Declaration Rejected	E_EXS_REJ	CO1A0501(SUM)	No EBP, but trader notified of EXS rejection	XML sent by SDS to Trader performing Lodgement to declare the EXS sent in IE615 as invalid.	Receive
IE628	Exit Summary Declaration Acknowledgement	E_EXS_ACK	CO1A0501(SUM)	EXS forwarded for risk analysis	XML sent by SD system to Trader performing Lodgement to declare the EXS sent in IE615 as valid.	Receive

Locally defined messages for the communication with traders systems

Message Type	Name	Reference	Description	Trader Action
OPRACK	Confirmation Of Arrival / Delivery	E_OPER_ACK	XML sent to trader to confirm arrival of the particular message. If such message is not delivered the posting of the message need to be done again. XML sent to trader to confirm delivery of the message to the Summary Declaration System and is waiting to be processed.	Receive
OPRNACK	Error notification	E_OPER_NACK	In case of any technical error an error notification message will be used to notify the trader with the error.	Receive
BRMREQ	Browse messages request	E_BRMS_REQ	A request for the list of pending messages can be triggered by the trader application.	Send
BRMRES	Browse messages response	E_BRMS_RES	The response for message BRMREQ with a list of message identification numbers that are pending for the particular trader.	Receive
RMMREQ	Retrieve multiple message request	E_RTMM_REQ	A request to retrieve a number of messages corresponding to the given message identification number, which is sent with the request message.	Send
RMMRES	Retrieve multiple message response	E_RTMM_RES	The response for message RMMREQ containing the messages as per particular message identification number requested..	Receive
RTMEAC	Retrieve ENS acknowledgment message	E_RETMEAC	A request to retrieve an ENS Acknowledgement message corresponding to the given message identification number, which is sent with the request.	Send
RTMERJ	Retrieve ENS rejection message	E_RETMEERJ	A request to retrieve an ENS Rejection message corresponding to the given message identification number, which is sent with the request.	Send

RTMAAC	Retrieve amendment acknowledgment message	E_RETM_AAC	A request to retrieve an Amendment Acknowledgement message corresponding to the given message identification number, which is sent with the request.	Send
RTMARJ	Retrieve amendment rejection message	E_RETM_ARJ	A request to retrieve an Amendment Rejection message corresponding to the given message identification number, which is sent with the request.	Send
RTMDAC	Retrieve diversion acknowledgment message	E_RETM_DAC	A request to retrieve a Diversion Acknowledgement message corresponding to the given message identification number, which is sent with the request.	Send
RTMDRJ	Retrieve diversion rejection message	E_RETM_DRJ	A request to retrieve a Diversion Rejection message corresponding to the given message identification number, which is sent with the request.	Send
RTMANT	Retrieve advanced notification message	E_RETM_ANT	A request to retrieve an Advanced Notification message corresponding to the given message identification number, which is sent with the request.	Send
RTMEXSAC	Retrieve EXS acknowledgment message	E_RETM_EXSAC	A request to retrieve an EXS Acknowledgement message corresponding to the given message identification number, which is sent with the request.	Send
RTMEXSRJ	Retrieve EXS rejection message	E_RETM_EXSRJ	A request to retrieve an EXS Rejection message corresponding to the given message identification number, which is sent with the request.	Send
RTMEXSAAC	Retrieve EXS amendment acceptance message	E_RETM_EXSAAC	A request to retrieve an Amendment Acknowledgement message corresponding to the given message identification number, which is sent with the request.	Send
RTMEXSARJ	Retrieve EXS amendment rejection message	E_RETM_EXSARJ	A request to retrieve an Amendment Rejection message corresponding to the given message identification number, which is sent with the request.	Send

05.2.2 Web Application

Malta Customs SD application functionality:

- System Login: Traders will be provided with a Malta Customs Login. National traders which are Maltese citizens can make use of the e-ID authentication mechanism when this function will be implemented.
- Create New Entry/Exit Summary Declaration: The logged on user will have the possibility to create a new declaration with all the declaration details and temporarily save the declaration before final submission to Malta Customs.
- Update and Submit Summary Declaration: The temporary saved declaration can be further updated and submitted for processing to Malta Customs.
- Submit Amendment of an Entry Summary Declaration: For each declaration an amendment can be performed as specified in the EU regulation.
- Submit Diversion of an Entry Summary Declaration: the entry carrier will have the possibility to request an international diversion subject to EU regulation.
- Search for a Summary Declaration: A search facility will be available to search for declarations by reference no, date and status.
- View Summary Declaration details: Declaration details can be viewed by logged in users.

List of Traders Notifications

- Risk Notifications are sent for the whole ENS or per item.
- Exit control decision notification
- The following type of notifications are delivered:
 1. Acknowledgement Notification for new summary declarations, amendment and diversion requests.
 2. Rejection Notification for new summary declarations, request for amendment or diversion.
 3. Advanced Intervention Notifications should be generated upon no load decisions from CRMS and optionally triggered by the Customs officers in case of selection of control
- The notification sending policy for Person Lodging, Entry Carrier and Notification Party is as follows:
 1. Person Lodging – The User lodging the declaration through Traders web application or System to system will always be notified.
 2. Other Parties –
 - o 1st preference for notification: System to system login linked to TIN.
 - o 2nd preference: Trader application users linked to TIN (if system to system not available this will be used)
 - o 3rd preference: Email linked to TIN from EORI (if no other method exist)
- All notifications will have an expiry of 30 days.

Traders Details Validations

- The 'user' in the IE message is the same as the user logged in. This is an automatic process.
- The user logged in has a direct link with the TIN no. of the person lodging the Summary Declaration.

- In case of Export Summary declaration, the person lodging can be either the Trader Representative or the Trader Entry Carrier. In the case where the trader entry carrier is used, the trader representative details are not required; this will be the same in the case the trader representative details are entered instead. No restrictions are imposed if the trader both carrier and representative details are inputted.
- The Person lodging the Exit Summary Declaration can either be a Trader (at Exit) or a Representative (at Exit) being allowed to amend the Exit Summary declaration on his behalf.
- The Consignor Trader and the Consignee Trader cannot be the same while submitting any of the two summary declarations.
- The Notify Party (at Export) is exclusive and therefore it should be different from all traders details entered.

06. Design Consideration

06.1 Assumptions and Dependencies

The main assumptions that are being made by the Malta Customs are the following:

- Any trader will use one connection mechanism i.e. either the web interface or the system to system connection.
- Malta Customs will not accept Lodgement of an entry summary declaration when it is not the Office of First Entry, but will accept ENS lodged at different member states when Malta is the Office of First Entry.
- Malta may not be used to lodge an exit summary declaration when the Office of Exit is in another Member State.

06.2 Development Standards

System to system

The web services available for traders to connect to the Malta Customs Summary Declaration System will be built in accordance to the standards presented in the table below.

Type	Description	Technology	Reference
Schema Specification	XML based schema specification for the provision of structure, content and semantics of XML documents.	W3C Schema Definitions	http://www.w3c.org
Structured Data	Standard format for the provision of structured data.	XML	http://www.w3.org/TR/xmlschema-1/
XML Schema Language	The structure of a class of documents described via element and attribute-list declarations.	DTD	http://www.w3schools.com/Xml/xml_dtd.asp
Secure Transport	Provision of secure transport across networks.	SSL	http://www.ietf.org/rfc/rfc2246.txt
Web Services	A standard means of interoperating between different software applications, running on a variety of platforms and/or frameworks, over the Internet	WSDL 1.1	http://www.w3.org/TR/wsdl
Web Services Structured Information	SOAP is a lightweight protocol intended for exchanging structured information in a decentralized, distributed environment.	SOAP 1.1	http://www.w3.org/TR/soap/
Web Services Addressing	Web Services Addressing (WS-Addressing) defines two interoperable constructs that convey information that is typically provided by transport protocols and messaging systems	WS-Addressing	http://www.w3.org/Submission/ws-addressing/

Web Application

The web applications will be made available on the internet through an SSL channel and can be accessible via standard web browser.

Security Features

The Web services will be delivered over an HTTPS channel and comply with WS-Security 1.1 open standard. The login and password to be used when consuming the web services will be provided as part of the registration process.

07. Use of Web Services

This section gives a description of the soap message structure adopted by the SD web services. For illustrative purposes, indicative request and response scenarios for each web service are given.

07.1 Soap Message Structure

Each soap envelope request message will be made up of 2 sections namely the Header and Body. However, each response soap message will be made up of single section being the Body only.

```
<env:Envelope xmlns:env="http://schemas.xmlsoap.org/soap/envelope/" >
  <env:Header>
  </env:Header>
  <env:Body>
  </env:Body>
</env:Envelope>
```

07.2 Soap Headers

In the soap header, a username and password must be provided as a means of authentication and authorisation for the web service used. An example is shown below:

```
<env:Header>
  <wsse:Security xmlns:wsse="http://docs.oasis-open.org/wss/2004/01/oasis-200401-wss-
wssecurity-secext-1.0.xsd">
    <wsse:UsernameToken>
      <wsse:Username>username</wsse:Username>
      <wsse:Password>password</wsse:Password>
    </wsse:UsernameToken>
  </wsse:Security>
</env:Header>
```

07.3 Message Group Elements

Each message in the Summary Declaration System (SDS) contains a number of elements which have information about the message being communicated. These elements are define by a group name called MESSAGE group. The elements found in the MESSAGE group are defined below:

Element	Description	Required
MesSenMES3	Message sender	<input checked="" type="checkbox"/>
MesRecMES6	Message recipient	<input checked="" type="checkbox"/>
DatOfPreMES9	Date of preparation	<input checked="" type="checkbox"/>
TimOfPreMES10	Time of preparation	<input checked="" type="checkbox"/>
PriMES15	Priority	
TesIndMES18	Test indicator	
MesIdeMES19	Message identification	<input checked="" type="checkbox"/>
MesTypMES20	Message type	<input checked="" type="checkbox"/>
CorIdeMES25	Correlation identifier	

An example is shown below:

```
<MesSenMES3> Sender</MesSenMES3>
<MesRecMES6>Recipient</MesRecMES6>
<DatOfPreMES9>090101</DatOfPreMES9>
<TimOfPreMES10>0000</TimOfPreMES10>
<MesIdeMES19> MT000000000000</MesIdeMES19>
<MesTypMES20> TYPE</MesTypMES20>
```

07.4 SDS Web Services

07.4.1 Registration of Entry Summary Declaration (ENS)

Web Service Name: RegisterENSOperation

The web service will be used for the registration of a new summary declaration with the SD system. As a reply the web service will return an operation acknowledge with ARRIVAL as type (OPRACK) or an operation not acknowledged message (OPRNAK).

07.4.1.1 Soap Request

Header is required for the message.

Header Type	Description
WS Security	Web Service Security

The table below holds the elements used in the request message body. The elements inside CC315A are not listed in the table, since this element follows an xml schema found in Appendix A.

Element	Description	Required
CC315A	IE315: ENTRY SUMMARY DECLARATION	<input checked="" type="checkbox"/>

Soap request example (The elements inside CC315A are the minimum required elements to be valid against the CC315A schema):

```
<env:Envelope xmlns:env="http://schemas.xmlsoap.org/soap/envelope/"
xmlns:cc3="http://ces.gov.mt/ics/schemas/CC315A">
  <env:Header>
    <wsse:Security xmlns:wsse="http://docs.oasis-open.org/wss/2004/01/oasis-200401-wss-
wssecurity-secext-1.0.xsd">
      <wsse:UsernameToken>
        <wsse:Username>username</wsse:Username>
        <wsse:Password>password</wsse:Password>
      </wsse:UsernameToken>
    </wsse:Security>
  </env:Header>
  <env:Body>
    <cc3:CC315A>
      <cc3:MesSenMES3>Sender</cc3:MesSenMES3>
      <cc3:MesRecMES6>NICA.MT</cc3:MesRecMES6>
      <cc3:DatOfPreMES9>090101</cc3:DatOfPreMES9>
      <cc3:TimOfPreMES10>0000</cc3:TimOfPreMES10>
      <cc3:MesIdeMES19>MT000000000000</cc3:MesIdeMES19>
      <cc3:MesTypMES20>CC315A</cc3:MesTypMES20>
      <cc3:HEAHEA>
        <cc3:RefNumHEA4>MT00000000000000000000</cc3:RefNumHEA4>
        <cc3:TraModAtBorHEA76>3</cc3:TraModAtBorHEA76>
        <cc3:TotNumOfIteHEA305>1</cc3:TotNumOfIteHEA305>
        <cc3:DecPlaHEA394>String</cc3:DecPlaHEA394>
      </cc3:HEAHEA>
    </cc3:CC315A>
  </env:Body>
</env:Envelope>
```

```

    <cc3:DecDatTimHEA114>200901010000</cc3:DecDatTimHEA114>
  </cc3:HEAHEA>
  <cc3:GOOITEGDS>
    <cc3:IteNumGDS7>1</cc3:IteNumGDS7>
  </cc3:GOOITEGDS>
  <cc3:PERLODSUMDEC>
    <cc3:TINPLD1>TIN000000</cc3:TINPLD1>
  </cc3:PERLODSUMDEC>
  <cc3:CUSOFFFENT730>
    <cc3:RefNumCUSOFFFENT731>MT000400</cc3:RefNumCUSOFFFENT731>
    <cc3:ExpDatOfArrFIRENT733>200901010000</cc3:ExpDatOfArrFIRENT733>
  </cc3:CUSOFFFENT730>
  </cc3:CC315A>
</env:Body>
</env:Envelope>

```

07.4.1.2 Soap Response

No headers are return by the message.

Elements used in the response message body.

Element	Description
-OPRACK	Operation Acknowledgement
--AcknowledgementType	Type of Acknowledgement (ARRIVAL / DELIVERED)

Soap response example

```

<env:Envelope xmlns:env="http://schemas.xmlsoap.org/soap/envelope/"
  xmlns:xsd="http://www.w3.org/2001/XMLSchema" xmlns:xsi="http://www.w3.org/2001/XMLSchema-
  instance" xmlns:ns0="http://ces.gov.mt/ics/schemas/ediMessages">
  <env:Body>
    <ns0:OPRACK>
      <ns0:MesSenMES3>Sender</ns0:MesSenMES3>
      <ns0:MesRecMES6>Recipient</ns0:MesRecMES6>
      <ns0:DatOfPreMES9>090101</ns0:DatOfPreMES9>
      <ns0:TimOfPreMES10>0000</ns0:TimOfPreMES10>
      <ns0:MesIdeMES19>MT000000000001</ns0:MesIdeMES19>
      <ns0:MesTypMES20>OPRACK</ns0:MesTypMES20>
      <ns0:CorIdeMES25>MT000000000000</ns0:CorIdeMES25>
      <ns0:AcknowledgementType>ARRIVED</ns0:AcknowledgementType>
    </ns0:OPRACK>
  </env:Body>
</env:Envelope>

```

07.4.1.3 Error Response

When errors occur, an Operation Not Acknowledge message (OPRNAK) is returned. This response message does not contain a header section.

The elements used in the response message body.

Element	Description
-OPRNAK	Operation Not Acknowledgement
--Operation Failure	Information about failing the operation
--- Error Type	Type of error occurred
--- Error Message	Message error occurred

Soap response example

```
<env:Envelope xmlns:env="http://schemas.xmlsoap.org/soap/envelope/"
xmlns:xsd="http://www.w3.org/2001/XMLSchema" xmlns:xsi="http://www.w3.org/2001/XMLSchema-
instance" xmlns:ns0="http://ces.gov.mt/ics/schemas/ediMessages">
  <env:Body>
    <env:Fault xsi:type="env:Fault">
      <faultcode>env:Server</faultcode>
      <faultstring xsi:nil="1"/>
      <detail>
        <ns0:OPRNAK>
          <ns0:MesSenMES3>Sender</ns0:MesSenMES3>
          <ns0:MesRecMES6>Recipient</ns0:MesRecMES6>
          <ns0:DatOfPreMES9>090101</ns0:DatOfPreMES9>
          <ns0:TimOfPreMES10>0000</ns0:TimOfPreMES10>
          <ns0:MesIdeMES19>MT000000000001</ns0:MesIdeMES19>
          <ns0:MesTypMES20>OPRNAK</ns0:MesTypMES20>
          <ns0:CorIdeMES25>MT000000000000</ns0:CorIdeMES25>
          <ns0:OperationFailure>
            <ns0:ErrorType>InvalidIEMessageException</ns0:ErrorType>
            <ns0:ErrorMessageInvalidIEMessageException</ns0:ErrorMessage>
          </ns0:OperationFailure>
        </ns0:OPRNAK>
      </detail>
    </env:Fault>
  </env:Body>
</env:Envelope>
```

07.4.2 Amendment of Entry Summary Declaration (ENS)

Web Service Name: AmendENSOperation

The web service will be used for the amendment of an existing summary declaration with the SD system. As a reply the web service will return an operation acknowledge with ARRIVAL as type (OPRACK) or an operation not acknowledged message (OPRNAK).

07.4.2.1 Soap Request

Header is required for the message.

Header Type	Description
WS Security	Web Service Security

The table below holds the elements used in the request message body. The elements inside CC313A are not listed in the table, since this element follows an xml schema found in Appendix A.

Element	Description	Required
CC313A	IE313: Entry Summary Declaration Amendment	<input checked="" type="checkbox"/>

Soap request example:

```
<env:Envelope xmlns:env="http://schemas.xmlsoap.org/soap/envelope/"
xmlns:cc3="http://ces.gov.mt/ics/schemas/CC313A">
  <env:Header>
    <wsse:Security xmlns:wsse="http://docs.oasis-open.org/wss/2004/01/oasis-200401-wss-
wssecurity-secext-1.0.xsd">
      <wsse:UsernameToken>
        <wsse:Username>username</wsse:Username>
        <wsse:Password>password</wsse:Password>
      </wsse:UsernameToken>
    </wsse:Security>
  </env:Header>
  <env:Body>
    <cc3:CC313A>
      <cc3:MesSenMES3>Sender</cc3:MesSenMES3>
      <cc3:MesRecMES6>Recipient</cc3:MesRecMES6>
```

```

<cc3:DatOfPreMES9>090101</cc3:DatOfPreMES9>
<cc3:TimOfPreMES10>0000</cc3:TimOfPreMES10>
<cc3:MesIdeMES19>MT000000000000</cc3:MesIdeMES19>
<cc3:MesTypMES20>CC313A</cc3:MesTypMES20>
<cc3:HEAHEA>
  <cc3:DocNumHEA5>09MT000000000000</cc3:DocNumHEA5>
  <cc3:TraModAtBorHEA76>3</cc3:TraModAtBorHEA76>
  <cc3:TotNumOfIteHEA305>1</cc3:TotNumOfIteHEA305>
  <cc3:AmdPlaHEA598>String</cc3:AmdPlaHEA598>
  <cc3:DatTimAmeHEA113>200901010000</cc3:DatTimAmeHEA113>
</cc3:HEAHEA>
<cc3:GOOITEGDS>
  <cc3:IteNumGDS7>1</cc3:IteNumGDS7>
</cc3:GOOITEGDS>
<cc3:PERLODSUMDEC>
  <cc3:TINPLD1>TIN000000</cc3:TINPLD1>
</cc3:PERLODSUMDEC>
<cc3:CUSOFFFENT730>
  <cc3:RefNumCUSOFFFENT731>MT000400</cc3:RefNumCUSOFFFENT731>
  <cc3:ExpDatOfArrFIRENT733>200901010000</cc3:ExpDatOfArrFIRENT733>
</cc3:CUSOFFFENT730>
</cc3:CC313A>
</env:Body>
</env:Envelope>

```

07.4.2.2 Soap Response

No headers are return by the message.

Elements used in the response message body.

Element	Description
-OPRACK	Operation Acknowledgement
--AcknowledgementType	Type of Acknowledgement (ARRIVAL / DELIVERED)

Soap response example

```

<env:Envelope xmlns:env="http://schemas.xmlsoap.org/soap/envelope/"
xmlns:xsd="http://www.w3.org/2001/XMLSchema" xmlns:xsi="http://www.w3.org/2001/XMLSchema-
instance" xmlns:ns0="http://ces.gov.mt/ics/schemas/ediMessages">
  <env:Body>
    <ns0:OPRACK>
      <ns0:MesSenMES3>Sender</ns0:MesSenMES3>
      <ns0:MesRecMES6>Recipient</ns0:MesRecMES6>
      <ns0:DatOfPreMES9>090101</ns0:DatOfPreMES9>
      <ns0:TimOfPreMES10>0000</ns0:TimOfPreMES10>
      <ns0:MesIdeMES19>MT000000000001</ns0:MesIdeMES19>
      <ns0:MesTypMES20>OPRACK</ns0:MesTypMES20>
      <ns0:CorIdeMES25>MT000000000000</ns0:CorIdeMES25>
      <ns0:AcknowledgementType>ARRIVED</ns0:AcknowledgementType>
    </ns0:OPRACK>
  </env:Body>
</env:Envelope>

```

07.4.2.3 Error Response

When errors occur, an Operation Not Acknowledge message (OPRNAK) is returned. This response message does not contain a header section.

The elements used in the response message body.

Element	Description
-OPRNAK	Operation Not Acknowledgement
--Operation Failure	Information about failing the operation

--- Error Type	Type of error occurred
--- Error Message	Message error occurred

Soap response example

```
<env:Envelope xmlns:env="http://schemas.xmlsoap.org/soap/envelope/"
xmlns:xsd="http://www.w3.org/2001/XMLSchema" xmlns:xsi="http://www.w3.org/2001/XMLSchema-
instance" xmlns:ns0="http://ces.gov.mt/ics/schemas/ediMessages">
  <env:Body>
    <env:Fault xsi:type="env:Fault">
      <faultcode>env:Server</faultcode>
      <faultstring xsi:nil="1"/>
      <detail>
        <ns0:OPRNAK>
          <ns0:MesSenMES3>Sender</ns0:MesSenMES3>
          <ns0:MesRecMES6>Recipient</ns0:MesRecMES6>
          <ns0:DatOfPreMES9>090101</ns0:DatOfPreMES9>
          <ns0:TimOfPreMES10>0000</ns0:TimOfPreMES10>
          <ns0:MesIdeMES19>MT000000000001</ns0:MesIdeMES19>
          <ns0:MesTypMES20>OPRACK</ns0:MesTypMES20>
          <ns0:CorIdeMES25>MT000000000000</ns0:CorIdeMES25>
          <ns0:OperationFailure>
            <ns0:ErrorType>InvalidIEMessageException</ns0:ErrorType>
          </ns0:OperationFailure>
        </ns0:OPRNAK>
      </detail>
    </env:Fault>
  </env:Body>
</env:Envelope>
```

07.4.3 Diversion of Entry Summary Declaration (ENS)

Web Service Name :DivertENSOperation

The web service will be used for the diversion of existing summary declarations with the SD system. As a reply the web service will return an operation acknowledge with ARRIVAL as type (OPRACK) or an operation not acknowledged message (OPRNAK).

07.4.3.1 Soap Request

Header is required for the message.

Header Type	Description
WS Security	Web Service Security

The table below holds the elements used in the request message body. The elements inside CC323A are not listed in the table, since this element follows an xml schema found in Appendix A.

Element	Description	Required
CC323A	IE323: Diversion Request Import	<input checked="" type="checkbox"/>

Example of soap response

```
<env:Envelope xmlns:env="http://schemas.xmlsoap.org/soap/envelope/"
xmlns:cc3="http://ces.gov.mt/ics/schemas/CC323A">
```

```

<env:Header>
  <wsse:Security xmlns:wsse="http://docs.oasis-open.org/wss/2004/01/oasis-200401-wss-
wssecurity-secext-1.0.xsd">
    <wsse:UsernameToken>
      <wsse:Username>username</wsse:Username>
      <wsse:Password>password</wsse:Password>
    </wsse:UsernameToken>
  </wsse:Security>
</env:Header>
<env:Body>
  <cc3:CC323A>
    <cc3:MesSenMES3>Sender</cc3:MesSenMES3>
    <cc3:MesRecMES6>NICA.MT</cc3:MesRecMES6>
    <cc3:DatOfPreMES9>090101</cc3:DatOfPreMES9>
    <cc3:TimOfPreMES10>0000</cc3:TimOfPreMES10>
    <cc3:MesIdeMES19>MT000000000000</cc3:MesIdeMES19>
    <cc3:MesTypMES20>CC323A</cc3:MesTypMES20>
    <cc3:HEAHEA>
      <cc3:TraModAtBorHEA76>3</cc3:TraModAtBorHEA76>
      <cc3:InfTypHEA122>1</cc3:InfTypHEA122>
      <cc3:DivRefNumHEA119>MT00000000000000000000</cc3:DivRefNumHEA119>
    </cc3:HEAHEA>
    <cc3:CUSOFFENTACTOFF700>
      <cc3:RefNumCUSOFFENTACTOFF701>MT000000</cc3:RefNumCUSOFFENTACTOFF701>
    </cc3:CUSOFFENTACTOFF700>
    <cc3:TRAREQDIV456>
      <cc3:TINTRAREQDIV463>TIN000000</cc3:TINTRAREQDIV463>
    </cc3:TRAREQDIV456>
  </cc3:CC323A>
</env:Body>
</env:Envelope>

```

07.4.3.2 Soap Response

No headers are return by the message.

Elements used in the response message body.

Element	Description
-OPRACK	Operation Acknowledgement
--AcknowledgementType	Type of Acknowledgement (ARRIVAL / DELIVERED)

Soap response example

```

<env:Envelope xmlns:env="http://schemas.xmlsoap.org/soap/envelope/"
xmlns:xsd="http://www.w3.org/2001/XMLSchema" xmlns:xsi="http://www.w3.org/2001/XMLSchema-
instance" xmlns:ns0="http://ces.gov.mt/ics/schemas/ediMessages">
  <env:Body>
    <ns0:OPRACK>
      <ns0:MesSenMES3>Sender</ns0:MesSenMES3>
      <ns0:MesRecMES6>Recipient</ns0:MesRecMES6>
      <ns0:DatOfPreMES9>090101</ns0:DatOfPreMES9>
      <ns0:TimOfPreMES10>0000</ns0:TimOfPreMES10>
      <ns0:MesIdeMES19>MT000000000001</ns0:MesIdeMES19>
      <ns0:MesTypMES20>OPRACK</ns0:MesTypMES20>
      <ns0:CorIdeMES25>MT000000000000</ns0:CorIdeMES25>
      <ns0:AcknowledgementType>ARRIVED</ns0:AcknowledgementType>
    </ns0:OPRACK>
  </env:Body>
</env:Envelope>

```

07.4.3.3 Error Response

When errors occur, an Operation Not Acknowledge message (OPRNAK) is returned. This response message does not contain a header section.

The elements used in the response message body.

Element	Description
-OPRNAK	Operation Not Acknowledgement
--Operation Failure	Information about failing the operation
--- Error Type	Type of error occurred
--- Error Message	Message error occurred

Example of soap response

```
<env:Envelope xmlns:env="http://schemas.xmlsoap.org/soap/envelope/"
xmlns:xsd="http://www.w3.org/2001/XMLSchema" xmlns:xsi="http://www.w3.org/2001/XMLSchema-
instance" xmlns:ns0="http://ces.gov.mt/ics/schemas/ediMessages">
  <env:Body>
    <env:Fault xsi:type="env:Fault">
      <faultcode>env:Server</faultcode>
      <faultstring xsi:nil="1"/>
      <detail>
        <ns0:OPRNAK>
          <ns0:MesSenMES3>Sender</ns0:MesSenMES3>
          <ns0:MesRecMES6>Recipient</ns0:MesRecMES6>
          <ns0:DatOfPreMES9>090101</ns0:DatOfPreMES9>
          <ns0:TimOfPreMES10>0000</ns0:TimOfPreMES10>
          <ns0:MesIdeMES19>MT000000000001</ns0:MesIdeMES19>
          <ns0:MesTypMES20>OPRACK</ns0:MesTypMES20>
          <ns0:CorIdeMES25>MT000000000000</ns0:CorIdeMES25>
          <ns0:OperationFailure>
            <ns0:ErrorType>InvalidIEMessageException</ns0:ErrorType>
          </ns0:OperationFailure>
        </ns0:OPRNAK>
      </detail>
    </env:Fault>
  </env:Body>
</env:Envelope>
```

07.4.4 Registration of Arrival Notification (ARN) for ENS

Web Service Name: RegisterARNOperation

The web service will be used for the registration of an arrival notification. As a reply the web service will return an operation acknowledge with ARRIVAL as type (OPRACK) or an operation not acknowledged message (OPRNAK).

07.4.4.1 Soap Request

Header is required for the message.

Header Type	Description
WS Security	Web Service Security

The table below holds the elements used in the request message body. The elements inside CC347A are not listed in the table, since this element follows an xml schema found in Appendix A.

Element	Description	Required
CC347A	IE347: Arrival Notification	<input checked="" type="checkbox"/>

```

<env:Envelope xmlns:env=http://schemas.xmlsoap.org/soap/envelope/
xmlns:cc3="http://ces.gov.mt/ics/schemas/CC347A">
<soapenv:Header>
  <wsse:Security xmlns:wsse="http://docs.oasis-open.org/wss/2004/01/oasis-200401-wss-
wssecurity-secext-1.0.xsd">
    <wsse:UsernameToken>
      <wsse:Username>username</wsse:Username>
      <wsse:Password>password</wsse:Password>
    </wsse:UsernameToken>
  </wsse:Security>
</soapenv:Header>
<soapenv:Body>
<cc3:CC347A xmlns="http://ces.gov.mt/ics/schemas/CC347A">
  <cc3:MesSenMES3>sender</cc3:MesSenMES3>
  <cc3:MesRecMES6>NICA.MT</cc3:MesRecMES6>
  <cc3:DatOfPreMES9>090812</cc3:DatOfPreMES9>
  <cc3:TimOfPreMES10>0502</cc3:TimOfPreMES10>
  <cc3:MesIdeMES19>MT120809000355</cc3:MesIdeMES19>
  <cc3:MesTypMES20>CC347A</cc3:MesTypMES20>
  <cc3:arrival-operation>
    <cc3:arrival-lrn>anarrival lrn15</cc3:arrival-lrn>
    <cc3:transport-mode-at-border>3</cc3:transport-mode-at-border>
    <cc3:identification-of-the-means-of-transport>identifi      mena      of
transoprt</cc3:identification-of-the-means-of-transport>
    <cc3:date-and-time-of-presentation>200908251034</cc3:date-and-time-of-
presentation>
    <cc3:expected-date-and-time-of-arrival>200908252245</cc3:expected-date-and-
time-of-arrival>
    <cc3:country-code-of-office-of-first-entry-declared>DK</cc3:country-code-of-
office-of-first-entry-declared>
    <cc3:total-number-of-arrival-items>56</cc3:total-number-of-arrival-items>
    <cc3:total-number-of-arrival-packages>44</cc3:total-number-of-arrival-packages>
    <cc3:total-gross-mass>34.5</cc3:total-gross-mass>
  </cc3:arrival-operation>
  <cc3:arrival-item>
    <cc3:arrival-item-number>1</cc3:arrival-item-number>
    <cc3:transport-document-data>
      <cc3:document-type>34</cc3:document-type>
      <cc3:transport-document-reference>45</cc3:transport-document-
reference>
      <cc3:transport-document-reference-lng>DE</cc3:transport-
document-reference-lng>
    </cc3:transport-document-data>
    <cc3:customs-data-reference>
      <cc3:mrn>09MT29080000004109</cc3:mrn>
      <cc3:country-code-of-office-of-first-entry-
declared>IT</cc3:country-code-of-office-of-first-entry-declared>
      <cc3:customs-data-reference-details>
        <cc3:mrn-item-number>1</cc3:mrn-item-number>
      </cc3:customs-data-reference-details>
      <cc3:customs-data-reference-details>
        <cc3:mrn-item-number>2</cc3:mrn-item-number>
      </cc3:customs-data-reference-details>
    </cc3:customs-data-reference>
    <cc3:customs-data-reference>
      <cc3:mrn>09MT29080000004093</cc3:mrn>
      <cc3:country-code-of-office-of-first-entry-
declared>FR</cc3:country-code-of-office-of-first-entry-declared>
      <cc3:customs-data-reference-details>
        <cc3:mrn-item-number>3</cc3:mrn-item-number>
      </cc3:customs-data-reference-details>
      <cc3:customs-data-reference-details>
        <cc3:mrn-item-number>4</cc3:mrn-item-number>
      </cc3:customs-data-reference-details>
    </cc3:customs-data-reference>
  </cc3:arrival-item>
  <cc3:entry-carrier-trader>
    <cc3:name>Buhagiar Ltd.</cc3:name>
    <cc3:street-and-number>101, San Gwann Industrial Estates</cc3:street-
and-number>
    <cc3:country-code>MT</cc3:country-code>
    <cc3:postal-code>GWN 1234</cc3:postal-code>
    <cc3:city>San Gwann </cc3:city>
    <cc3:nad-lng>GB</cc3:nad-lng>
  </cc3:entry-carrier-trader>
</cc3:CC347A>
</soapenv:Body>
</env:Envelope>

```

```

        <cc3:tin>MT10384545</cc3:tin>
      </cc3:entry-carrier-trader>
    <cc3:customs-office-actual-office-of-first-entry>
      <cc3:reference-number>MT000400</cc3:reference-number>
    </cc3:customs-office-actual-office-of-first-entry>
  </cc3:CC347A>
</soapenv:Body>
</soapenv:Envelope>

```

07.4.4.2 Soap Response

No headers are return by the message.

Elements used in the response message body.

Element	Description
-OPRACK	Operation Acknowledgement
--AcknowledgementType	Type of Acknowledgement (ARRIVAL / DELIVERED)

Soap response example

```

<env:Envelope xmlns:env="http://schemas.xmlsoap.org/soap/envelope/"
  xmlns:xsd="http://www.w3.org/2001/XMLSchema" xmlns:xsi="http://www.w3.org/2001/XMLSchema-
  instance" xmlns:ns0="http://ces.gov.mt/ics/schemas/ediMessages">
  <env:Body>
    <ns0:OPRACK>
      <ns0:MesSenMES3>Sender</ns0:MesSenMES3>
      <ns0:MesRecMES6>Recipient</ns0:MesRecMES6>
      <ns0:DatOfPreMES9>090101</ns0:DatOfPreMES9>
      <ns0:TimOfPreMES10>0000</ns0:TimOfPreMES10>
      <ns0:MesIdeMES19>MT000000000001</ns0:MesIdeMES19>
      <ns0:MesTypMES20>OPRACK</ns0:MesTypMES20>
      <ns0:CorIdeMES25>MT000000000000</ns0:CorIdeMES25>
      <ns0:AcknowledgementType>ARRIVED</ns0:AcknowledgementType>
    </ns0:OPRACK>
  </env:Body>
</env:Envelope>

```

07.4.4.3 Error Response

When errors occur, an Operation Not Acknowledge message (OPRNAK) is returned. This response message does not contain a header section.

The elements used in the response message body.

Element	Description
-OPRNAK	Operation Not Acknowledgement
--Operation Failure	Information about failing the operation
--- Error Type	Type of error occurred
--- Error Message	Message error occurred

Soap response example

```

<env:Envelope xmlns:env="http://schemas.xmlsoap.org/soap/envelope/"
  xmlns:xsd="http://www.w3.org/2001/XMLSchema" xmlns:xsi="http://www.w3.org/2001/XMLSchema-
  instance" xmlns:ns0="http://ces.gov.mt/ics/schemas/ediMessages">
  <env:Body>
    <env:Fault xsi:type="env:Fault">
      <faultcode>env:Server</faultcode>
    </env:Fault>
  </env:Body>
</env:Envelope>

```

```

<faultstring xsi:nil="1"/>
<detail>
  <ns0:OPRNAK>
    <ns0:MesSenMES3>Sender</ns0:MesSenMES3>
    <ns0:MesRecMES6>Recipient</ns0:MesRecMES6>
    <ns0:DatOfPreMES9>090101</ns0:DatOfPreMES9>
    <ns0:TimOfPreMES10>0000</ns0:TimOfPreMES10>
    <ns0:MesIdeMES19>MT000000000001</ns0:MesIdeMES19>
    <ns0:MesTypMES20>OPRNAK</ns0:MesTypMES20>
    <ns0:CorIdeMES25>MT000000000000</ns0:CorIdeMES25>
    <ns0:OperationFailure>
      <ns0:ErrorType>InvalidIEMessageException</ns0:ErrorType>
      <ns0:ErrorMessageInvalidIEMessageException</ns0:ErrorMessage>
    </ns0:OperationFailure>
  </ns0:OPRNAK>
</detail>
</env:Fault>
</env:Body>
</env:Envelope>

```

07.4.5 Registration of Exit Summary Declaration (EXS)

Web Service Name: RegisterEXSOperation

The web service will be used for the registration of a new exit summary declaration with the SD system. As a reply the web service will return an operation acknowledge with ARRIVAL as type (OPRACK) or an operation not acknowledged message (OPRNAK).

07.4.5.1 Soap Request

Header is required for the message.

Header Type	Description
WS Security	Web Service Security

The table below holds the elements used in the request message body. The elements inside CC615A are not listed in the table, since this element follows an xml schema found in Appendix A.

Element	Description	Required
CC615A	IE615: EXIT SUMMARY DECLARATION	<input checked="" type="checkbox"/>

Soap request example (The elements inside CC615A are the minimum required elements to be valid against the CC615A schema):

```

<env:Envelope xmlns:env="http://schemas.xmlsoap.org/soap/envelope/"
xmlns:cc3="http://ces.gov.mt/ics/schemas/CC615A">
<soapenv:Header>
<wsse:Security xmlns:wsse="http://docs.oasis-open.org/wss/2004/01/oasis-200401-wss-wssecurity-secext-1.0.xsd">
  <wsse:UsernameToken>
    <wsse:Username>username</wsse:Username>
    <wsse:Password>password</wsse:Password>
  </wsse:UsernameToken>
</wsse:Security>
</soapenv:Header>
<soapenv:Body>
<cc3:CC615A xmlns="http://ces.gov.mt/ics/schemas/CC615A">
  <cc3:SynIdeMES1>UNOC</cc3:SynIdeMES1>
  <cc3:SynVerNumMES2>3</cc3:SynVerNumMES2>

```



```

<cc3:MesSenMES3>sender</cc3:MesSenMES3>
<cc3:MesRecMES6>NECA.MT</cc3:MesRecMES6>
<cc3:DatOfPreMES9>081202</cc3:DatOfPreMES9>
<cc3:TimOfPreMES10>1620</cc3:TimOfPreMES10>
<cc3:IntConRefMES11>MT200909141208</cc3:IntConRefMES11>
<cc3:TesIndMES18>1</cc3:TesIndMES18>
<cc3:MesIdeMES19>MT200903200801</cc3:MesIdeMES19>
<cc3:MesTypMES20>CC615A</cc3:MesTypMES20>
<cc3:HEAHEA>
  <cc3:RefNumHEA4>021009-01</cc3:RefNumHEA4>
  <cc3:CusSubPlaHEA66>cust SUBPlace</cc3:CusSubPlaHEA66>
  <cc3:TotNumOfIteHEA305>3</cc3:TotNumOfIteHEA305>
  <cc3:TotNumOfPacHEA306>31</cc3:TotNumOfPacHEA306>
  <cc3:TotGroMasHEA307>500.855</cc3:TotGroMasHEA307>
  <cc3:DecDatHEA383>20090914</cc3:DecDatHEA383>
  <cc3:DecPlaHEA394>Malta</cc3:DecPlaHEA394>
  <cc3:DecPlaHEA394LNG>EN</cc3:DecPlaHEA394LNG>
  <cc3:SpeCirIndHEA1>A</cc3:SpeCirIndHEA1>
  <cc3:TraChaMetOfPayHEA1>A</cc3:TraChaMetOfPayHEA1>
  <cc3:ComRefNumHEA>IS123412</cc3:ComRefNumHEA>
</cc3:HEAHEA>
<!--Consignor trader-->
<cc3:TRACONCO1>
  <cc3:NamCO17>Karv G.</cc3:NamCO17>
  <cc3:StrAndNumCO122>Du Pont</cc3:StrAndNumCO122>
  <cc3:PosCodCO123>65487</cc3:PosCodCO123>
  <cc3:CitCO124>Rome</cc3:CitCO124>
  <cc3:CouCO125>IT</cc3:CouCO125>
  <cc3:TINCO159>IT123412254874156</cc3:TINCO159>
</cc3:TRACONCO1>
<cc3:CUSOFFEXIEXT>
  <cc3:RefNumEXT1>DE003354</cc3:RefNumEXT1>
</cc3:CUSOFFEXIEXT>
<!--Goods Item 1:-->
<cc3:GOOITEGDS>
  <cc3:IteNumGDS7>1</cc3:IteNumGDS7>
  <cc3:GooDesGDS23>Tomatoes</cc3:GooDesGDS23>
  <cc3:GroMasGDS46>223.34</cc3:GroMasGDS46>
  <cc3:ComRefNumGIM1>Tom123456789</cc3:ComRefNumGIM1>
  <cc3:UNDanGooCodGDI1>0004</cc3:UNDanGooCodGDI1>
  <!--Produced Documents-->
  <cc3:PRODOCDC2>
    <cc3:DocTypDC21>N235</cc3:DocTypDC21>
    <cc3:DocRefDC23>589745</cc3:DocRefDC23>
  </cc3:PRODOCDC2>
  <!--Code Commodity-->
  <cc3:COMCODGODITM>
    <cc3:ComNomCMD1>GK45345</cc3:ComNomCMD1>
  </cc3:COMCODGODITM>
  <!--Container-->
  <cc3:CONNR2>
    <cc3:ConNumNR21>98765</cc3:ConNumNR21>
  </cc3:CONNR2>
  <!--Packages-->
  <cc3:PACGS2>
    <cc3:KinOfPacGS23>VQ</cc3:KinOfPacGS23>
    <cc3:MarNumOfPacGSL21>Mark1</cc3:MarNumOfPacGSL21>
  </cc3:PACGS2>
</cc3:GOOITEGDS>
<!--Goods Item 2:-->
<cc3:GOOITEGDS>
  <cc3:IteNumGDS7>2</cc3:IteNumGDS7>
  <cc3:GooDesGDS23>Potatoes</cc3:GooDesGDS23>
  <cc3:GroMasGDS46>16.57</cc3:GroMasGDS46>
  <cc3:ComRefNumGIM1>Pot123456789</cc3:ComRefNumGIM1>
  <cc3:UNDanGooCodGDI1>0004</cc3:UNDanGooCodGDI1>
  <!--Produced Documents-->
  <cc3:PRODOCDC2>
    <cc3:DocTypDC21>N235</cc3:DocTypDC21>
    <cc3:DocRefDC23>589745</cc3:DocRefDC23>
  </cc3:PRODOCDC2>
  <!--Code Commodity-->
  <cc3:COMCODGODITM>
    <cc3:ComNomCMD1>GK45345</cc3:ComNomCMD1>
  </cc3:COMCODGODITM>
  <!--Container-->

```

```

    <cc3:CONNR2>
      <cc3:ConNumNR21>98765</cc3:ConNumNR21>
    </cc3:CONNR2>
    <!--Packages-->
    <cc3:PACGS2>
      <cc3:KinOfPacGS23>NE</cc3:KinOfPacGS23>
      <cc3:NumOfPieGS25>15</cc3:NumOfPieGS25>
      <cc3:MarNumOfPacGSL21>Mark2</cc3:MarNumOfPacGSL21>
    </cc3:PACGS2>
  </cc3:GOOITEGDS>
  <!--Goods Item 3:-->
  <cc3:GOOITEGDS>
    <cc3:IteNumGDS7>3</cc3:IteNumGDS7>
    <cc3:GooDesGDS23>Onions</cc3:GooDesGDS23>
    <cc3:GroMasGDS46>6.34</cc3:GroMasGDS46>
    <cc3:ComRefNumGIM1>Oni123456789</cc3:ComRefNumGIM1>
    <cc3:UNDanGooCodGDI1>0004</cc3:UNDanGooCodGDI1>
    <!--Produced Documents-->
    <cc3:PRODOCDC2>
      <cc3:DocTypDC21>N235</cc3:DocTypDC21>
      <cc3:DocRefDC23>589745</cc3:DocRefDC23>
    </cc3:PRODOCDC2>
    <!--Code Commodity-->
    <cc3:COMCODGODITM>
      <cc3:ComNomCMD1>GK45345</cc3:ComNomCMD1>
    </cc3:COMCODGODITM>
    <!--Container-->
    <cc3:CONNR2>
      <cc3:ConNumNR21>98765</cc3:ConNumNR21>
    </cc3:CONNR2>
    <!--Packages-->
    <cc3:PACGS2>
      <cc3:KinOfPacGS23>AD</cc3:KinOfPacGS23>
      <cc3:NumOfPacGS24>15</cc3:NumOfPacGS24>
    </cc3:PACGS2>
  </cc3:GOOITEGDS>
  <!--Itinerary-->
  <cc3:ITI>
    <cc3:CouOfRouCodITI1>MT</cc3:CouOfRouCodITI1>
  </cc3:ITI>
  <!--Lodgement Customs Office-->
  <cc3:CUSOFFLON>
    <cc3:RefNumCOL1>MT000118</cc3:RefNumCOL1>
  </cc3:CUSOFFLON>
  <!--Representative-->
  <cc3:TRAREP>
    <cc3:NamTRE1>Mark Andersenn</cc3:NamTRE1>
    <cc3:StrAndNumTRE1>12 Highland Avenue</cc3:StrAndNumTRE1>
    <cc3:PosCodTRE1>23659</cc3:PosCodTRE1>
    <cc3:CitTRE1>OSLO</cc3:CitTRE1>
    <cc3:CouCodTRE1>IT</cc3:CouCodTRE1>
    <cc3:TRAREPLNG>EN</cc3:TRAREPLNG>
    <cc3:TINTRE1>IT123412</cc3:TINTRE1>
  </cc3:TRAREP>
  <!--Lodging Summary Declaration Person-->
  <cc3:PERLODSUMDEC>
    <cc3:NamPLD1>Mark Andersenn</cc3:NamPLD1>
    <cc3:StrAndNumPLD1>12 Highland Avenue</cc3:StrAndNumPLD1>
    <cc3:PosCodPLD1>23659</cc3:PosCodPLD1>
    <cc3:CitPLD1>OSLO</cc3:CitPLD1>
    <cc3:CouCodPLD1>IT</cc3:CouCodPLD1>
    <cc3:PERLODSUMDECLNG>EN</cc3:PERLODSUMDECLNG>
    <cc3:TINPLD1>IT123412</cc3:TINPLD1>
  </cc3:PERLODSUMDEC>
  <!--Seals ID-->
  <cc3:SEAI529>
    <cc3:SeaIdSEAI530>K244</cc3:SeaIdSEAI530>
  </cc3:SEAI529>
</cc3:CC615A>
</soapenv:Body>
</soapenv:Envelope>

```

07.4.5.2 Soap Response

No headers are return by the message.

Elements used in the response message body.

Element	Description
-OPRACK	Operation Acknowledgement
--AcknowledgementType	Type of Acknowledgement (ARRIVED / DELIVERED)

Example of soap response

```
<env:Envelope xmlns:env="http://schemas.xmlsoap.org/soap/envelope/"
xmlns:xsd="http://www.w3.org/2001/XMLSchema" xmlns:xsi="http://www.w3.org/2001/XMLSchema-
instance" xmlns:ns0="http://ces.gov.mt/ics/schemas/ediMessages">
  <env:Body>
    <ns0:OPRACK>
      <ns0:MesSenMES3>Sender</ns0:MesSenMES3>
      <ns0:MesRecMES6>Recipient</ns0:MesRecMES6>
      <ns0:DatOfPreMES9>090101</ns0:DatOfPreMES9>
      <ns0:TimOfPreMES10>0000</ns0:TimOfPreMES10>
      <ns0:MesIdeMES19>MT000000000001</ns0:MesIdeMES19>
      <ns0:MesTypMES20>OPRACK</ns0:MesTypMES20>
      <ns0:CorIdeMES25>MT000000000000</ns0:CorIdeMES25>
      <ns0:AcknowledgementType>ARRIVED</ns0:AcknowledgementType>
    </ns0:OPRACK>
  </env:Body>
</env:Envelope>
```

07.4.5.3 Error Response

When errors occur, an Operation Not Acknowledge message (OPRNAK) is returned. This response message does not contain a header section.

The elements used in the response message body.

Element	Description
-OPRNAK	Operation Not Acknowledgement
--Operation Failure	Information about failing the operation
--- Error Type	Type of error occurred
--- Error Message	Message error occurred

Soap response example

```
<env:Envelope xmlns:env="http://schemas.xmlsoap.org/soap/envelope/"
xmlns:xsd="http://www.w3.org/2001/XMLSchema" xmlns:xsi="http://www.w3.org/2001/XMLSchema-
instance" xmlns:ns0="http://ces.gov.mt/ics/schemas/ediMessages">
  <env:Body>
    <env:Fault xsi:type="env:Fault">
      <faultcode>env:Server</faultcode>
      <faultstring xsi:nil="1"/>
      <detail>
        <ns0:OPRNAK>
          <ns0:MesSenMES3>Sender</ns0:MesSenMES3>
          <ns0:MesRecMES6>Recipient</ns0:MesRecMES6>
          <ns0:DatOfPreMES9>090101</ns0:DatOfPreMES9>
          <ns0:TimOfPreMES10>0000</ns0:TimOfPreMES10>
          <ns0:MesIdeMES19>MT000000000001</ns0:MesIdeMES19>
          <ns0:MesTypMES20>OPRNAK</ns0:MesTypMES20>
          <ns0:CorIdeMES25>MT000000000000</ns0:CorIdeMES25>
          <ns0:OperationFailure>
            <ns0:ErrorType>InvalidIEMessageException</ns0:ErrorType>
            <ns0:ErrorMessageInvalidIEMessageException</ns0:ErrorMessage>
          </ns0:OperationFailure>
        </ns0:OPRNAK>
      </detail>
    </env:Fault>
  </env:Body>
</env:Envelope>
```

```

    </detail>
  </env:Fault>
</env:Body>
</env:Envelope>

```

07.4.6 Amendment of Exit Summary Declaration (EXS)

Web Service Name: AmendENSOperation

The web service will be used for the amendment of an existing exit summary declaration with the SD system. As a reply the web service will return an operation acknowledge with ARRIVAL as type (OPRACK) or an operation not acknowledged message (OPRNAK).

07.4.6.1 Soap Request

Header is required for the message.

Header Type	Description
WS Security	Web Service Security

The table below holds the elements used in the request message body. The elements inside CC613A are not listed in the table, since this element follows an xml schema found in Appendix A.

Element	Description	Required
CC613A	IE613: Exit Summary Declaration Amendment	<input checked="" type="checkbox"/>

Soap request example:

```

<soapenv:Envelope xmlns:soapenv="http://schemas.xmlsoap.org/soap/envelope/"
  xmlns:cc6="http://ces.gov.mt/ics/schemas/CC613A">
  <soapenv:Header>
    <wsse:Security xmlns:wsse="http://docs.oasis-open.org/wss/2004/01/oasis-200401-wss-
      wssecurity-secext-1.0.xsd">
      <wsse:UsernameToken>
        <wsse:Username>username</wsse:Username>
        <wsse:Password>password</wsse:Password>
      </wsse:UsernameToken>
    </wsse:Security>
  </soapenv:Header>
  <soapenv:Body>
    <cc6:CC613A>
      <cc6:SynIdeMES1>UNOC</cc6:SynIdeMES1>
      <cc6:SynVerNumMES2>3</cc6:SynVerNumMES2>
      <cc6:MesSenMES3>Sender</cc6:MesSenMES3>
      <cc6:MesRecMES6>Recipient</cc6:MesRecMES6>
      <cc6:DatOfPreMES9>090101</cc6:DatOfPreMES9>
      <cc6:TimOfPreMES10>0000</cc6:TimOfPreMES10>
      <cc6:MesIdeMES19>MT000000000000</cc6:MesIdeMES19>
      <cc6:MesTypMES20>CC313A</cc6:MesTypMES20>
      <cc6:HEAHEA>
        <cc6:DocNumHEA5>11MT31084000003692</cc6:DocNumHEA5>
        <cc6:CusSubPlaHEA66>cust SUBplace</cc6:CusSubPlaHEA66>
        <cc6:TotNumOfIteHEA305>2</cc6:TotNumOfIteHEA305>
        <cc6:TotNumOfPacHEA306>46</cc6:TotNumOfPacHEA306>
        <cc6:TotGroMasHEA307>500.855</cc6:TotGroMasHEA307>
        <cc6:DecDatHEA383>20090914</cc6:DecDatHEA383>
        <cc6:DecPlaHEA394>Malta</cc6:DecPlaHEA394>
        <cc6:DecPlaHEA394LNG>EN</cc6:DecPlaHEA394LNG>
        <cc6:SpeCirIndHEA1>A</cc6:SpeCirIndHEA1>
        <cc6:TraChaMetOfPayHEA1>A</cc6:TraChaMetOfPayHEA1>
        <cc6:ComRefNumHEA>IS123412</cc6:ComRefNumHEA>
      </cc6:HEAHEA>
      <!--Consignor trader-->
      <cc6:TRACONCO1>
        <cc6:NamCO17>Karv G.</cc6:NamCO17>
        <cc6:StrAndNumCO122>Du Pont</cc6:StrAndNumCO122>
      </cc6:TRACONCO1>
    </cc6:CC613A>
  </soapenv:Body>
</soapenv:Envelope>

```

```

        <cc6:PosCodCO123>65487</cc6:PosCodCO123>
        <cc6:CitCO124>Rome</cc6:CitCO124>
        <cc6:CouCO125>IT</cc6:CouCO125>
        <cc6:TINCO159>IT10566840152</cc6:TINCO159>
    </cc6:TRACONCO1>
    <cc6:CUSOFFEXIEXT>
        <cc6:RefNumEXT1>MT000113</cc6:RefNumEXT1>
    </cc6:CUSOFFEXIEXT>

<cc6:GOOITEGDS>
    <cc6:IteNumGDS7>1</cc6:IteNumGDS7>
    <cc6:GooDesGDS23>HIP STORES ( LUBE OIL )</cc6:GooDesGDS23>
    <cc6:GooDesGDS23LNG>EN</cc6:GooDesGDS23LNG>
    <cc6:GroMasGDS46>450.85</cc6:GroMasGDS46>
    <cc6:PACGS2>
        <cc6:KinOfPacGS23>CS</cc6:KinOfPacGS23>
        <cc6:NumOfPacGS24>31</cc6:NumOfPacGS24>
    </cc6:PACGS2>
    <cc6:PACGS2>
        <cc6:KinOfPacGS23>CS</cc6:KinOfPacGS23>
        <cc6:NumOfPacGS24>5</cc6:NumOfPacGS24>
        <cc6:MarNumOfPacGSL21>pck3</cc6:MarNumOfPacGSL21>
    </cc6:PACGS2>
</cc6:GOOITEGDS>
<cc6:GOOITEGDS>
    <cc6:IteNumGDS7>2</cc6:IteNumGDS7>
    <cc6:GooDesGDS23>Cosmetics</cc6:GooDesGDS23>
    <cc6:GooDesGDS23LNG>EN</cc6:GooDesGDS23LNG>
    <cc6:GroMasGDS46>50.005</cc6:GroMasGDS46>
    <cc6:PACGS2>
        <cc6:KinOfPacGS23>CS</cc6:KinOfPacGS23>
        <cc6:NumOfPacGS24>5</cc6:NumOfPacGS24>
    </cc6:PACGS2>
    <cc6:PACGS2>
        <cc6:KinOfPacGS23>CS</cc6:KinOfPacGS23>
        <cc6:NumOfPacGS24>5</cc6:NumOfPacGS24>
        <cc6:MarNumOfPacGSL21>pck3</cc6:MarNumOfPacGSL21>
    </cc6:PACGS2>
</cc6:GOOITEGDS>

    <!--Itinerary-->
    <cc6:ITI>
        <cc6:CouOfRouCodITII1>MT</cc6:CouOfRouCodITII1>
    </cc6:ITI>
    <!--Lodgement Customs Office-->
    <cc6:CUSOFFLON>
        <cc6:RefNumCOL1>MT000118</cc6:RefNumCOL1>
    </cc6:CUSOFFLON>
    <!--Representative-->
    <cc6:TRAREP>
        <cc6:NamTRE1>Mark Andersenn</cc6:NamTRE1>
        <cc6:StrAndNumTRE1>12 Highland Avenue</cc6:StrAndNumTRE1>
        <cc6:PosCodTRE1>23659</cc6:PosCodTRE1>
        <cc6:CitTRE1>OSLO</cc6:CitTRE1>
        <cc6:CouCodTRE1>IT</cc6:CouCodTRE1>
        <cc6:TRAREPLNG>EN</cc6:TRAREPLNG>
        <cc6:TINTRE1>IT06789781009</cc6:TINTRE1>
    </cc6:TRAREP>
    <!--Lodging Summary Declaration Person-->
    <cc6:PERLODSUMDEC>
        <cc6:NamPLD1>Mark Andersenn</cc6:NamPLD1>
        <cc6:StrAndNumPLD1>12 Highland Avenue</cc6:StrAndNumPLD1>
        <cc6:PosCodPLD1>23659</cc6:PosCodPLD1>
        <cc6:CitPLD1>OSLO</cc6:CitPLD1>
        <cc6:CouCodPLD1>IT</cc6:CouCodPLD1>
        <cc6:PERLODSUMDECLNG>EN</cc6:PERLODSUMDECLNG>
        <cc6:TINPLD1>XX12345678</cc6:TINPLD1>
    </cc6:PERLODSUMDEC>
    <!--Seals ID-->
    <cc6:SEAI529>
        <cc6:SeaIdSEAI530>K244</cc6:SeaIdSEAI530>
    </cc6:SEAI529>
</cc6:CC613A>
    </soapenv:Body>
</soapenv:Envelope>

```

07.4.6.2 Soap Response

No headers are return by the message.

Elements used in the response message body.

Element	Description
-OPRACK	Operation Acknowledgement
--AcknowledgementType	Type of Acknowledgement (ARRIVAL / DELIVERED)

Soap response example

```
<env:Envelope xmlns:env="http://schemas.xmlsoap.org/soap/envelope/"
xmlns:xsd="http://www.w3.org/2001/XMLSchema" xmlns:xsi="http://www.w3.org/2001/XMLSchema-
instance" xmlns:ns0="http://ces.gov.mt/ics/schemas/ediMessages">
  <env:Body>
    <ns0:OPRACK>
      <ns0:MesSenMES3>Sender</ns0:MesSenMES3>
      <ns0:MesRecMES6>Recipient</ns0:MesRecMES6>
      <ns0:DatOfPreMES9>090101</ns0:DatOfPreMES9>
      <ns0:TimOfPreMES10>0000</ns0:TimOfPreMES10>
      <ns0:MesIdeMES19>MT000000000001</ns0:MesIdeMES19>
      <ns0:MesTypMES20>OPRACK</ns0:MesTypMES20>
      <ns0:CorIdeMES25>MT000000000000</ns0:CorIdeMES25>
      <ns0:AcknowledgementType>ARRIVED</ns0:AcknowledgementType>
    </ns0:OPRACK>
  </env:Body>
</env:Envelope>
```

07.4.6.3 Error Response

When errors occur, an Operation Not Acknowledge message (OPRNAK) is returned. This response message does not contain a header section.

The elements used in the response message body.

Element	Description
-OPRNAK	Operation Not Acknowledgement
--Operation Failure	Information about failing the operation
--- Error Type	Type of error occurred
--- Error Message	Message error occurred

Soap response example

```
<env:Envelope xmlns:env="http://schemas.xmlsoap.org/soap/envelope/"
xmlns:xsd="http://www.w3.org/2001/XMLSchema" xmlns:xsi="http://www.w3.org/2001/XMLSchema-
instance" xmlns:ns0="http://ces.gov.mt/ics/schemas/ediMessages">
  <env:Body>
    <env:Fault xsi:type="env:Fault">
      <faultcode>env:Server</faultcode>
      <faultstring xsi:nil="1"/>
      <detail>
        <ns0:OPRNAK>
          <ns0:MesSenMES3>Sender</ns0:MesSenMES3>
          <ns0:MesRecMES6>Recipient</ns0:MesRecMES6>
          <ns0:DatOfPreMES9>090101</ns0:DatOfPreMES9>
          <ns0:TimOfPreMES10>0000</ns0:TimOfPreMES10>
          <ns0:MesIdeMES19>MT000000000001</ns0:MesIdeMES19>
          <ns0:MesTypMES20>OPRACK</ns0:MesTypMES20>
          <ns0:CorIdeMES25>MT000000000000</ns0:CorIdeMES25>
          <ns0:OperationFailure>
            <ns0:ErrorType>InvalidIEMessageException</ns0:ErrorType>
          </ns0:OperationFailure>
        </ns0:OPRNAK>
      </detail>
    </env:Fault>
  </env:Body>
</env:Envelope>
```

```

<ns0:ErrorMessage>mt.gov.ces.ics.interop.ie.InvalidIEMessageException</ns0:ErrorMessage>
  </ns0:OperationFailure>
</ns0:OPRNAK>
</detail>
</env:Fault>
</env:Body>
</env:Envelope>

```

07.4.7 Browse for pending messages

Web Service Name: BrowseMessagesOperation

The web service will be used by traders to browse for messages which are pending for retrieval in the ICS system. The requested message is a browse message request (BRMREQ). As a reply the web service will return a browse message response (BRMRES) or an operation not acknowledged message (OPRNAK) in case of errors.

07.4.7.1 Soap Request

Header is required for the message.

Header Type	Description
WS Security	Web Service Security

The elements used in the request message body.

Element	Description	Required
-BRMREQ	Browse Message Request	<input checked="" type="checkbox"/>
--MaxResults	Maximum number of results returned	
--Filter	Filter element to widen the search query	
---MesRecMES6	Message Recipient (TIN of Lodgement Person)	<input checked="" type="checkbox"/>
---PriMES15	Priority of Message	
---MesTypMES20	Message Type of the messages to browse for	
---CorIdcMES25	Correlation identifier of the message to browse for	
---RefNumHEA4	Reference number of ENS which await response	
---DocNumHEA5	Document reference number of ENS which await response	
---DivRefNumHEA119	Diversion reference number of diversions which await response	

Soap request example

```

<env:Envelope xmlns:env="http://schemas.xmlsoap.org/soap/envelope/"
  xmlns:edim="http://ces.gov.mt/ics/schemas/ediMessages">
  <env:Header>
    <wsse:Security xmlns:wsse="http://docs.oasis-open.org/wss/2004/01/oasis-200401-wss-
  wssecurity-secext-1.0.xsd">
      <wsse:UsernameToken>
        <wsse:Username>username</wsse:Username>
        <wsse:Password>password</wsse:Password>
      </wsse:UsernameToken>
    </wsse:Security>
  </env:Header>

```

```

<env:Body>
  <edim:BRMREQ>
    <edim:MesSenMES3>Sender</edim:MesSenMES3>
    <edim:MesRecMES6>NICA.MT</edim:MesRecMES6>
    <edim:DatOfPreMES9>090101</edim:DatOfPreMES9>
    <edim:TimOfPreMES10>0000</edim:TimOfPreMES10>
    <edim:MesIdeMES19>MT000000000000</edim:MesIdeMES19>
    <edim:MesTypMES20>BRMREQ</edim:MesTypMES20>
    <!--Optional:-->
    <edim:MaxResults>100</edim:MaxResults>
    <!--Zero or more repetitions:-->
    <edim:Filter>
      <edim:MesRecMES6>username</edim:MesRecMES6>
    </edim:Filter>
    <edim:Filter>
      <edim:MesRecMES6>TIN000000</edim:MesRecMES6>
      <!--You have a CHOICE-->
      <edim:RefNumHEA4>MT00000000000000000000</edim:RefNumHEA4>
    </edim:Filter>
  </edim:BRMREQ>
</env:Body>
</env:Envelope>

```

Provided that technical messages are addressed to the username and not to the tin, it is advised that the BRMREQ will include a filter which defines the username as recipient. This is meant to capture any technical OPRACK(Confirmation of Delivery) and OPRNAK messages.

07.4.7.2 Soap Response

No headers are return by the message.

Elements used in the response message body. Best practice, is to store the message selectors locally, so that if errors occur during retrieval, the message identifier is kept, and thus retrieval can be requested again.

Element	Description
-BRMRES	Browse Messages Response
--NoOfMessages	Number of message selectors returned in the response
--MessageSelector	Message Identification of the message pending on the web services
--MessageSummary	Summary of the message waiting in the web service
---MesSenMES3	Message sender
---MesRecMES6	Message recipient
---DatOfPreMES9	Date of preparation
---TimOfPreMES10	Time of preparation
---PriMES15	Priority
---TesIndMES18	Test indicator
---MesIdeMES19	Message identification
---MesTypMES20	Message type
---CorIdeMES25	Correlation identifier
---RefNumHEA4	Reference number of ENS
---DocNumHEA5	Document reference number of ENS
---DivRefNumHEA119	Diversion reference number of diversion

Example of soap response


```

<env:Envelope xmlns:env="http://schemas.xmlsoap.org/soap/envelope/"
xmlns:xsd="http://www.w3.org/2001/XMLSchema" xmlns:xsi="http://www.w3.org/2001/XMLSchema-
instance" xmlns:ns0="http://ces.gov.mt/ics/schemas/ediMessages">
  <env:Body>
    <ns0:BRMRES>
      <ns0:MesSenMES3>Sender</ns0:MesSenMES3>
      <ns0:MesRecMES6>Recipient</ns0:MesRecMES6>
      <ns0:DatOfPreMES9>090101</ns0:DatOfPreMES9>
      <ns0:TimOfPreMES10>0000</ns0:TimOfPreMES10>
      <ns0:MesIdeMES19>MT000000000002</ns0:MesIdeMES19>
      <ns0:MesTypMES20>BRMRES</ns0:MesTypMES20>
      <ns0:CorIdeMES25>MT000000000000</ns0:CorIdeMES25>
      <ns0:NoOfMessages>1</ns0:NoOfMessages>
      <ns0:Message>
        <ns0:MessageSelector>MT000000000001</ns0:MessageSelector>
        <ns0:MessageSummary>
          <ns0:MesSenMES3>Sender</ns0:MesSenMES3>
          <ns0:MesRecMES6>TIN000000</ns0:MesRecMES6>
          <ns0:DatOfPreMES9>090104</ns0:DatOfPreMES9>
          <ns0:TimOfPreMES10>0000</ns0:TimOfPreMES10>
          <ns0:MesIdeMES19>MT000000000001</ns0:MesIdeMES19>
          <ns0:MesTypMES20>CC316A</ns0:MesTypMES20>
          <ns0:CorIdeMES25>MT000000000000</ns0:CorIdeMES25>
          <ns0:RefNumHEA4>MT00000000000000000000</ns0:RefNumHEA4>
        </ns0:MessageSummary>
      </ns0:Message>
    </ns0:BRMRES>
  </env:Body>
</env:Envelope>

```

07.4.7.3 Error Response

When errors occur, an Operation Not Acknowledge message (OPRACK) is returned. This response message does not contain a header section.

The elements used in the response message body.

Element	Description
-OPRACK	Operation Not Acknowledgement
--Operation Failure	Information about failing the operation
--- Error Type	Type of error occurred
--- Error Message	Message error occurred

Soap response example

```

<env:Envelope xmlns:env="http://schemas.xmlsoap.org/soap/envelope/"
xmlns:xsd="http://www.w3.org/2001/XMLSchema" xmlns:xsi="http://www.w3.org/2001/XMLSchema-
instance" xmlns:ns0="http://ces.gov.mt/ics/schemas/ediMessages">
  <env:Body>
    <env:Fault xsi:type="env:Fault">
      <faultcode>env:Server</faultcode>
      <faultstring xsi:nil="1"/>
      <detail>
        <ns0:OPRACK>
          <ns0:MesSenMES3>Sender</ns0:MesSenMES3>
          <ns0:MesRecMES6>Recipient</ns0:MesRecMES6>
          <ns0:DatOfPreMES9>090101</ns0:DatOfPreMES9>
          <ns0:TimOfPreMES10>0000</ns0:TimOfPreMES10>
          <ns0:MesIdeMES19>MT000000000001</ns0:MesIdeMES19>
          <ns0:MesTypMES20>OPRACK</ns0:MesTypMES20>
          <ns0:CorIdeMES25>MT000000000000</ns0:CorIdeMES25>
          <ns0:OperationFailure>
            <ns0:ErrorType>InvalidIEMessageException</ns0:ErrorType>
          </ns0:OperationFailure>
        </ns0:OPRACK>
      </detail>
    </env:Fault>
  </env:Body>
</env:Envelope>

```

```

    </detail>
  </env:Fault>
</env:Body>
</env:Envelope>

```

07.4.8 Retrieve multiple messages

Web Service Name: RetrieveMessagesOperation

The web service will be used by traders to retrieve messages from the SD system. The requested message is a retrieve multiple request message (RMMREQ). As a reply the web service will return a retrieve multiple response message (RMMRES) or an operation not acknowledged message (OPRNAK) in case of errors.

07.4.8.1 Soap Request

Header is required for the message.

Header Type	Description
WS Security	Web Service Security

The elements used in the request message body.

Element	Description	Required
-RMMREQ	Retrieve Multiple Messages Request	<input checked="" type="checkbox"/>
--MessageSelector	The Message Identification of the message to be retrieved	<input checked="" type="checkbox"/>

Soap response example

```

<env:Envelope xmlns:env="http://schemas.xmlsoap.org/soap/envelope/"
xmlns:edim="http://ces.gov.mt/ics/schemas/ediMessages">
  <env:Header>
    <wsse:Security xmlns:wsse="http://docs.oasis-open.org/wss/2004/01/oasis-200401-wss-
wssecurity-secext-1.0.xsd">
      <wsse:UsernameToken>
        <wsse:Username>username</wsse:Username>
        <wsse:Password>password</wsse:Password>
      </wsse:UsernameToken>
    </wsse:Security>
  </env:Header>
  <env:Body>
    <edim:RMMREQ>
      <edim:MesSenMES3>Sender</edim:MesSenMES3>
      <edim:MesRecMES6>NICA.MT</edim:MesRecMES6>
      <edim:DatOfPreMES9>090101</edim:DatOfPreMES9>
      <edim:TimOfPreMES10>0000</edim:TimOfPreMES10>
      <edim:MesIdeMES19>MT000000000000</edim:MesIdeMES19>
      <edim:MesTypMES20>RMMREQ</edim:MesTypMES20>
      <!--1 or more repetitions:-->
      <edim:MessageSelector>MT000000000001</edim:MessageSelector>
    </edim:RMMREQ>
  </env:Body>
</env:Envelope>

```

07.4.8.2 Soap Response

No headers are return by the message.

Elements used in the response message body.

Element	Description
---------	-------------

-RMMRES	Retrieve Multiple Messages Response
--DeliveredMessage	Data of the message to be retrieved
---MessageSelector	Message Identification of the message retrieved
---MessageData	The message itself

Soap response example

```
<env:Envelope xmlns:env="http://schemas.xmlsoap.org/soap/envelope/"
xmlns:xsd="http://www.w3.org/2001/XMLSchema" xmlns:xsi="http://www.w3.org/2001/XMLSchema-
instance" xmlns:ns0="http://ces.gov.mt/ics/schemas/ediMessages">
  <env:Body>
    <ns0:RMMRES>
      <ns0:MesSenMES3>Sender</ns0:MesSenMES3>
      <ns0:MesRecMES6>Recipient</ns0:MesRecMES6>
      <ns0:DatOfPreMES9>090101</ns0:DatOfPreMES9>
      <ns0:TimOfPreMES10>0000</ns0:TimOfPreMES10>
      <ns0:MesIdeMES19>MT000000000002</ns0:MesIdeMES19>
      <ns0:MesTypMES20>RMMRES</ns0:MesTypMES20>
      <ns0:CorIdeMES25>MT000000000000</ns0:CorIdeMES25>
      <ns0:DeliveredMessage>
        <ns0:MessageSelector>MT000000000001</ns0:MessageSelector>
        <ns0:MessageData>
          <ns0:CC316A>
            <ns0:MesSenMES3>Sender</ns0:MesSenMES3>
            <ns0:MesRecMES6>TIN000000</ns0:MesRecMES6>
            <ns0:DatOfPreMES9>090101</ns0:DatOfPreMES9>
            <ns0:TimOfPreMES10>0000</ns0:TimOfPreMES10>
            <ns0:MesIdeMES19>MT000000000001</ns0:MesIdeMES19>
            <ns0:MesTypMES20>CC316A</ns0:MesTypMES20>
            <ns0:CorIdeMES25>MT000000000000</ns0:CorIdeMES25>
            . . . . .
          </ns0:CC316A>
        </ns0:MessageData>
      </ns0:DeliveredMessage>
    </ns0:RMMRES>
  </env:Body>
</env:Envelope>
```

07.4.8.3 Error Response

When errors occur, an Operation Not Acknowledge message (OPRNAK) is returned. This response message does not contain a header section.

The elements used in the response message body.

Element	Description
-OPRNAK	Operation Not Acknowledgement
--Operation Failure	Information about failing the operation
--- Error Type	Type of error occurred
--- Error Message	Message error occurred

Soap response example

```
<env:Envelope xmlns:env="http://schemas.xmlsoap.org/soap/envelope/"
xmlns:xsd="http://www.w3.org/2001/XMLSchema" xmlns:xsi="http://www.w3.org/2001/XMLSchema-
instance" xmlns:ns0="http://ces.gov.mt/ics/schemas/ediMessages">
  <env:Body>
    <env:Fault xsi:type="env:Fault">
      <faultcode>env:Server</faultcode>
      <faultstring xsi:nil="1"/>
    </env:Fault>
  </env:Body>
</env:Envelope>
```

```

<detail>
  <ns0:OPRNAK>
    <ns0:MesSenMES3>Sender</ns0:MesSenMES3>
    <ns0:MesRecMES6>Recipient</ns0:MesRecMES6>
    <ns0:DatOfPreMES9>090101</ns0:DatOfPreMES9>
    <ns0:TimOfPreMES10>0000</ns0:TimOfPreMES10>
    <ns0:MesIdeMES19>MT000000000001</ns0:MesIdeMES19>
    <ns0:MesTypMES20>OPRACK</ns0:MesTypMES20>
    <ns0:CorIdeMES25>MT000000000000</ns0:CorIdeMES25>
    <ns0:OperationFailure>
      <ns0:ErrorType>InvalidIEMessageException</ns0:ErrorType>
    </ns0:OperationFailure>
  </ns0:OPRNAK>
</ns0:ErrorMessage>mt.gov.ces.ics.interop.ie.InvalidIEMessageException</ns0:ErrorMessage>
</ns0:OperationFailure>
</ns0:OPRNAK>
</detail>
</env:Fault>
</env:Body>
</env:Envelope>

```

07.4.9 Retrieve Entry Summary Acknowledgement

Web Service Name : RetrieveENSAcknowledgement

The web service will be used by traders to retrieve the acknowledgment response messages from the SD system. The requested message is a retrieve single ENS Acknowledgment message (RTMEAC). As a reply the web service will return the ENS Acknowledgement message (IE328) or an operation not acknowledged message (OPRNAK) in case of errors.

07.4.9.1 Soap Request

Header is required for the message.

Header Type	Description
WS Security	Web Service Security

The elements used in the request message body.

Element	Description	Required
-RMTEAC	Retrieve ENS Acknowledgement	<input checked="" type="checkbox"/>
--MessageSelector	The Message Identification of the ENS Acknowledgement to be retrieved	<input checked="" type="checkbox"/>

Soap request example

```

<env:Envelope xmlns:env="http://schemas.xmlsoap.org/soap/envelope/"
  xmlns:edim="http://ces.gov.mt/ics/schemas/ediMessages">
  <env:Header>
    <wsse:Security xmlns:wsse="http://docs.oasis-open.org/wss/2004/01/oasis-200401-wss-
  wssecurity-secext-1.0.xsd">
      <wsse:UsernameToken>
        <wsse:Username>username</wsse:Username>
        <wsse:Password>password</wsse:Password>
      </wsse:UsernameToken>
    </wsse:Security>
  </env:Header>
  <env:Body>
    <edim:RTMEAC>
      <edim:MesSenMES3>Sender</edim:MesSenMES3>
    </edim:RTMEAC>
  </env:Body>
</env:Envelope>

```

```

    <edim:MesRecMES6>NICA.MT</edim:MesRecMES6>
    <edim:DatOfPreMES9>090101</edim:DatOfPreMES9>
    <edim:TimOfPreMES10>0000</edim:TimOfPreMES10>
    <edim:MesIdeMES19>MT000000000000</edim:MesIdeMES19>
    <edim:MesTypMES20>RTMEAC</edim:MesTypMES20>
    <edim:MessageSelector>MT000000000001</edim:MessageSelector>
  </edim:RTMEAC>
</env:Body>
</env:Envelope>

```

07.4.9.2 Soap Response

No headers are return by the message.

Elements used in the response message body.

Element	Description
-IE328	ENS Acknowledgment

Soap response example

```

<env:Envelope xmlns:env="http://schemas.xmlsoap.org/soap/envelope/"
xmlns:xsd="http://www.w3.org/2001/XMLSchema" xmlns:xsi="http://www.w3.org/2001/XMLSchema-
instance" xmlns:ns0="http://ces.gov.mt/ics/schemas/ediMessages">
  <env:Body>
    <CC328A xmlns="http://ces.gov.mt/ics/schemas/CC328A">
      <MesSenMES3>Sender</MesSenMES3>
      <MesRecMES6>Recipient</MesRecMES6>
      <DatOfPreMES9>090101</DatOfPreMES9>
      <TimOfPreMES10>0000</TimOfPreMES10>
      <MesIdeMES19>MT000000000002</MesIdeMES19>
      <MesTypMES20>RMMRES</MesTypMES20>
      <CorIdeMES25>MT000000000000</CorIdeMES25>
      ... ..
    </CC328A>
  </env:Body>
</env:Envelope>

```

07.4.9.3 Error Response

When errors occur, an Operation Not Acknowledge message (OPRNAK) is returned. This response message does not contain a header section.

The elements used in the response message body.

Element	Description
-OPRNAK	Operation Not Acknowledgement
--Operation Failure	Information about failing the operation
--- Error Type	Type of error occurred
--- Error Message	Message error occurred

Soap response example

```

<env:Envelope xmlns:env="http://schemas.xmlsoap.org/soap/envelope/"
xmlns:xsd="http://www.w3.org/2001/XMLSchema" xmlns:xsi="http://www.w3.org/2001/XMLSchema-
instance" xmlns:ns0="http://ces.gov.mt/ics/schemas/ediMessages">
  <env:Body>
    <env:Fault xsi:type="env:Fault">
      <faultcode>env:Server</faultcode>
      <faultstring xsi:nil="1"/>
      <detail>

```

```

<ns0:OPRNAK>
  <ns0:MesSenMES3>Sender</ns0:MesSenMES3>
  <ns0:MesRecMES6>Recipient</ns0:MesRecMES6>
  <ns0:DatOfPreMES9>090101</ns0:DatOfPreMES9>
  <ns0:TimOfPreMES10>0000</ns0:TimOfPreMES10>
  <ns0:MesIdeMES19>MT000000000001</ns0:MesIdeMES19>
  <ns0:MesTypMES20>OPRACK</ns0:MesTypMES20>
  <ns0:CorIdeMES25>MT000000000000</ns0:CorIdeMES25>
  <ns0:OperationFailure>
    <ns0:ErrorType>InvalidIEMessageException</ns0:ErrorType>
  </ns0:OperationFailure>
</ns0:OPRNAK>
<ns0:ErrorMessage>mt.gov.ces.ics.interop.ie.InvalidIEMessageException</ns0:ErrorMessage>
  </ns0:OperationFailure>
</ns0:OPRNAK>
</detail>
</env:Fault>
</env:Body>
</env:Envelope>

```

07.4.10 Retrieve Entry Summary Rejection

Web Service Name: RetrieveENSRejection

The web service will be used by traders to retrieve the rejection response messages from the SD system. The requested message is a retrieve single ENS Rejection message (RTMERJ). As a reply the web service will return the ENS Rejection message (IE316) or an operation not acknowledged message (OPRNAK) in case of errors.

07.4.10.1 Soap Request

Header is required for the message.

Header Type	Description
WS Security	Web Service Security

The elements used in the request message body.

Element	Description	Required
-RMTERJ	Retrieve ENS Rejection	<input checked="" type="checkbox"/>
--MessageSelector	The Message Identification of the ENS Rejection to be retrieved	<input checked="" type="checkbox"/>

Soap request example

```

<env:Envelope xmlns:env="http://schemas.xmlsoap.org/soap/envelope/"
  xmlns:edim="http://ces.gov.mt/ics/schemas/ediMessages">
  <env:Header>
    <wsse:Security xmlns:wsse="http://docs.oasis-open.org/wss/2004/01/oasis-200401-wss-
  wssecurity-secext-1.0.xsd">
      <wsse:UsernameToken>
        <wsse:Username>username</wsse:Username>
        <wsse:Password>password</wsse:Password>
      </wsse:UsernameToken>
    </wsse:Security>
  </env:Header>
  <env:Body>
    <edim:RTMERJ>
      <edim:MesSenMES3>Sender</edim:MesSenMES3>
      <edim:MesRecMES6>NICA.MT</edim:MesRecMES6>
    </edim:RTMERJ>
  </env:Body>
</env:Envelope>

```

```

    <edim:DatOfPreMES9>090101</edim:DatOfPreMES9>
    <edim:TimOfPreMES10>0000</edim:TimOfPreMES10>
    <edim:MesIdeMES19>MT000000000000</edim:MesIdeMES19>
    <edim:MesTypMES20>RTMEAC</edim:MesTypMES20>
    <edim:MessageSelector>MT000000000001</edim:MessageSelector>
  </edim:RTMERJ>
</env:Body>
</env:Envelope>

```

07.4.10.2 Soap Response

No headers are return by the message.

Elements used in the response message body.

Element	Description
-IE316	ENS Rejection

Soap response example

```

<env:Envelope xmlns:env="http://schemas.xmlsoap.org/soap/envelope/"
xmlns:xsd="http://www.w3.org/2001/XMLSchema" xmlns:xsi="http://www.w3.org/2001/XMLSchema-
instance" xmlns:ns0="http://ces.gov.mt/ics/schemas/ediMessages">
  <env:Body>
    <CC316A xmlns="http://ces.gov.mt/ics/schemas/CC316A">
      <MesSenMES3>Sender</MesSenMES3>
      <MesRecMES6>Recipient</MesRecMES6>
      <DatOfPreMES9>090101</DatOfPreMES9>
      <TimOfPreMES10>0000</TimOfPreMES10>
      <MesIdeMES19>MT000000000002</MesIdeMES19>
      <MesTypMES20>RMMRES</MesTypMES20>
      <CorIdeMES25>MT000000000000</CorIdeMES25>
      ... ..
    </CC316A>
  </env:Body>
</env:Envelope>

```

07.4.10.3 Error Response

When errors occur, an Operation Not Acknowledge message (OPRNAK) is returned. This response message does not contain a header section.

The elements used in the response message body.

Element	Description
-OPRNAK	Operation Not Acknowledgement
--Operation Failure	Information about failing the operation
--- Error Type	Type of error occurred
--- Error Message	Message error occurred

Soap response example

```

<env:Envelope xmlns:env="http://schemas.xmlsoap.org/soap/envelope/"
xmlns:xsd="http://www.w3.org/2001/XMLSchema" xmlns:xsi="http://www.w3.org/2001/XMLSchema-
instance" xmlns:ns0="http://ces.gov.mt/ics/schemas/ediMessages">
  <env:Body>
    <env:Fault xsi:type="env:Fault">
      <faultcode>env:Server</faultcode>
      <faultstring xsi:nil="1"/>
      <detail>
        <ns0:OPRNAK>
          <ns0:MesSenMES3>Sender</ns0:MesSenMES3>
          <ns0:MesRecMES6>Recipient</ns0:MesRecMES6>
        </ns0:OPRNAK>
      </detail>
    </env:Fault>
  </env:Body>
</env:Envelope>

```

```

<ns0:DatOfPreMES9>090101</ns0:DatOfPreMES9>
<ns0:TimOfPreMES10>0000</ns0:TimOfPreMES10>
<ns0:MesIdeMES19>MT000000000001</ns0:MesIdeMES19>
<ns0:MesTypMES20>OPRACK</ns0:MesTypMES20>
<ns0:CorIdeMES25>MT000000000000</ns0:CorIdeMES25>
<ns0:OperationFailure>
  <ns0:ErrorType>InvalidIEMessageException</ns0:ErrorType>
</ns0:OperationFailure>
</ns0:ErrorMessage>
</ns0:OperationFailure>
  </ns0:OPRACK>
</detail>
</env:Fault>
</env:Body>
</env:Envelope>

```

07.4.11 Retrieve Amendment Acknowledgement

Web Service Name : RetrieveAmendAcknowledgement

The web service will be used by traders to retrieve the amendment acknowledgment response messages from the SD system. The requested message is a retrieve single Amendment Acknowledgement message (RTMAAC). As a reply the web service will return the Amendment Acknowledgement message (IE304) or an operation not acknowledged message (OPRACK) in case of errors.

07.4.11.1 Soap Request

Header is required for the message.

Header Type	Description
WS Security	Web Service Security

The elements used in the request message body.

Element	Description	Required
-RTMAAC	Retrieve Amendment Acknowledgement	<input checked="" type="checkbox"/>
--MessageSelector	The Message Identification of the Amendment Acknowledgement to be retrieved	<input checked="" type="checkbox"/>

Soap request example

```

<env:Envelope xmlns:env="http://schemas.xmlsoap.org/soap/envelope/"
xmlns:edim="http://ces.gov.mt/ics/schemas/ediMessages">
  <env:Header>
    <wsse:Security xmlns:wsse="http://docs.oasis-open.org/wss/2004/01/oasis-200401-wss-
wssecurity-secext-1.0.xsd">
      <wsse:UsernameToken>
        <wsse:Username>username</wsse:Username>
        <wsse:Password>password</wsse:Password>
      </wsse:UsernameToken>
    </wsse:Security>
  </env:Header>
  <env:Body>
    <edim:RTMAAC>
      <edim:MesSenMES3>Sender</edim:MesSenMES3>
      <edim:MesRecMES6>NICA.MT</edim:MesRecMES6>
      <edim:DatOfPreMES9>090101</edim:DatOfPreMES9>
    </edim:RTMAAC>
  </env:Body>
</env:Envelope>

```



```

    <edim:TimOfPreMES10>0000</edim:TimOfPreMES10>
    <edim:MesIdeMES19>MT000000000000</edim:MesIdeMES19>
    <edim:MesTypMES20>RTMEAC</edim:MesTypMES20>
    <edim:MessageSelector>MT000000000001</edim:MessageSelector>
  </edim:RTMAAC>
</env:Body>
</env:Envelope>

```

07.4.11.2 Soap Response

No headers are return by the message.

Elements used in the response message body.

Element	Description
-IE304	Amendment Acknowledgment

Soap response example

```

<env:Envelope xmlns:env="http://schemas.xmlsoap.org/soap/envelope/"
xmlns:xsd="http://www.w3.org/2001/XMLSchema" xmlns:xsi="http://www.w3.org/2001/XMLSchema-
instance" xmlns:ns0="http://ces.gov.mt/ics/schemas/ediMessages">
  <env:Body>
    <CC304A xmlns="http://ces.gov.mt/ics/schemas/CC304A">
      <MesSenMES3>Sender</MesSenMES3>
      <MesRecMES6>Recipient</MesRecMES6>
      <DatOfPreMES9>090101</DatOfPreMES9>
      <TimOfPreMES10>0000</TimOfPreMES10>
      <MesIdeMES19>MT000000000002</MesIdeMES19>
      <MesTypMES20>RMMRES</MesTypMES20>
      <CorIdeMES25>MT000000000000</CorIdeMES25>
      ... ..
    </CC304A>
  </env:Body>
</env:Envelope>

```

07.4.11.3 Error Response

When errors occur, an Operation Not Acknowledge message (OPRNAK) is returned. This response message does not contain a header section.

The elements used in the response message body.

Element	Description
-OPRNAK	Operation Not Acknowledgement
--Operation Failure	Information about failing the operation
--- Error Type	Type of error occurred
--- Error Message	Message error occurred

Soap response example

```

<env:Envelope xmlns:env="http://schemas.xmlsoap.org/soap/envelope/"
xmlns:xsd="http://www.w3.org/2001/XMLSchema" xmlns:xsi="http://www.w3.org/2001/XMLSchema-
instance" xmlns:ns0="http://ces.gov.mt/ics/schemas/ediMessages">
  <env:Body>
    <env:Fault xsi:type="env:Fault">
      <faultcode>env:Server</faultcode>
      <faultstring xsi:nil="1"/>
      <detail>
        <ns0:OPRNAK>
          <ns0:MesSenMES3>Sender</ns0:MesSenMES3>
          <ns0:MesRecMES6>Recipient</ns0:MesRecMES6>
          <ns0:DatOfPreMES9>090101</ns0:DatOfPreMES9>
          <ns0:TimOfPreMES10>0000</ns0:TimOfPreMES10>
        </ns0:OPRNAK>
      </detail>
    </env:Fault>
  </env:Body>
</env:Envelope>

```

```

<ns0:MesIdeMES19>MT000000000001</ns0:MesIdeMES19>
<ns0:MesTypMES20>OPRACK</ns0:MesTypMES20>
<ns0:CorIdeMES25>MT000000000000</ns0:CorIdeMES25>
<ns0:OperationFailure>
  <ns0:ErrorType>InvalidIEMessageException</ns0:ErrorType>
</ns0:OperationFailure>
<ns0:ErrorMessage>mt.gov.ces.ics.interop.ie.InvalidIEMessageException</ns0:ErrorMessage>
  </ns0:OperationFailure>
</ns0:OPRACK>
</detail>
</env:Fault>
</env:Body>
</env:Envelope>

```

07.4.12 Retrieve Amendment Rejection

Web Service Name: RetrieveAmendRejection

The web service will be used by traders to retrieve the rejection response messages from the SD system. The requested message is a retrieve single Amendment Rejection message (RTMARJ). As a reply the web service will return the Amendment Rejection message (IE305) or an operation not acknowledged message (OPRNAK) in case of errors.

07.4.12.1 Soap Request

Header is required for the message.

Header Type	Description
WS Security	Web Service Security

The elements used in the request message body.

Element	Description	Required
-RMTARJ	Retrieve Amendment Rejection	<input checked="" type="checkbox"/>
--MessageSelector	The Message Identification of the Amendment Rejection to be retrieved	<input checked="" type="checkbox"/>

Soap request example

```

<env:Envelope xmlns:env="http://schemas.xmlsoap.org/soap/envelope/"
  xmlns:edim="http://ces.gov.mt/ics/schemas/ediMessages">
  <env:Header>
    <wsse:Security xmlns:wsse="http://docs.oasis-open.org/wss/2004/01/oasis-200401-wss-
      wssecurity-secext-1.0.xsd">
      <wsse:UsernameToken>
        <wsse:Username>username</wsse:Username>
        <wsse:Password>password</wsse:Password>
      </wsse:UsernameToken>
    </wsse:Security>
  </env:Header>
  <env:Body>
    <edim:RTMARJ>
      <edim:MesSenMES3>Sender</edim:MesSenMES3>
      <edim:MesRecMES6>NICA.MT</edim:MesRecMES6>
      <edim:DatOfPreMES9>090101</edim:DatOfPreMES9>
      <edim:TimOfPreMES10>0000</edim:TimOfPreMES10>
      <edim:MesIdeMES19>MT000000000000</edim:MesIdeMES19>
      <edim:MesTypMES20>RTMEAC</edim:MesTypMES20>
      <edim:MessageSelector>MT000000000001</edim:MessageSelector>
    </edim:RTMARJ>
  </env:Body>
</env:Envelope>

```

07.4.12.2 Soap Response

No headers are return by the message.

Elements used in the response message body.

Element	Description
-IE305	Amendment Rejection

Soap response example

```
<env:Envelope xmlns:env="http://schemas.xmlsoap.org/soap/envelope/"
xmlns:xsd="http://www.w3.org/2001/XMLSchema" xmlns:xsi="http://www.w3.org/2001/XMLSchema-
instance" xmlns:ns0="http://ces.gov.mt/ics/schemas/ediMessages">
  <env:Body>
    <CC305A xmlns="http://ces.gov.mt/ics/schemas/CC305A">
      <MesSenMES3>Sender</MesSenMES3>
      <MesRecMES6>Recipient</MesRecMES6>
      <DatOfPreMES9>090101</DatOfPreMES9>
      <TimOfPreMES10>0000</TimOfPreMES10>
      <MesIdeMES19>MT000000000002</MesIdeMES19>
      <MesTypMES20>RMMRES</MesTypMES20>
      <CorIdeMES25>MT000000000000</CorIdeMES25>
      ... ..
    </CC305A>
  </env:Body>
</env:Envelope>
```

07.4.12.3 Error Response

When errors occur, an Operation Not Acknowledge message (OPRNAK) is returned. This response message does not contain a header section.

The elements used in the response message body.

Element	Description
-OPRNAK	Operation Not Acknowledgement
--Operation Failure	Information about failing the operation
--- Error Type	Type of error occurred
--- Error Message	Message error occurred

Soap response example

```
<env:Envelope xmlns:env="http://schemas.xmlsoap.org/soap/envelope/"
xmlns:xsd="http://www.w3.org/2001/XMLSchema" xmlns:xsi="http://www.w3.org/2001/XMLSchema-
instance" xmlns:ns0="http://ces.gov.mt/ics/schemas/ediMessages">
  <env:Body>
    <env:Fault xsi:type="env:Fault">
      <faultcode>env:Server</faultcode>
      <faultstring xsi:nil="1"/>
      <detail>
        <ns0:OPRNAK>
          <ns0:MesSenMES3>Sender</ns0:MesSenMES3>
          <ns0:MesRecMES6>Recipient</ns0:MesRecMES6>
          <ns0:DatOfPreMES9>090101</ns0:DatOfPreMES9>
          <ns0:TimOfPreMES10>0000</ns0:TimOfPreMES10>
          <ns0:MesIdeMES19>MT000000000001</ns0:MesIdeMES19>
          <ns0:MesTypMES20>OPRACK</ns0:MesTypMES20>
          <ns0:CorIdeMES25>MT000000000000</ns0:CorIdeMES25>
          <ns0:OperationFailure>
            <ns0:ErrorType>InvalidIEMessageException</ns0:ErrorType>
          </ns0:OperationFailure>
        </ns0:OPRNAK>
      </detail>
    </env:Fault>
  </env:Body>
</env:Envelope>
```

```

        </ns0:OperationFailure>
      </ns0:OPRNAK>
    </detail>
  </env:Fault>
</env:Body>
</env:Envelope>

```

07.4.13 Retrieve Diversion Acknowledgement

Web Service Name : RetrieveDivertAcknowledgement

The web service will be used by traders to retrieve the diversion acknowledgment response messages from the SD system. The requested message is a retrieve single Diversion Acknowledgment message (RTMDAC). As a reply the web service will return the Amendment Acknowledgement message (IE325) or an operation not acknowledged message (OPRNAK) in case of errors.

07.4.13.1 Soap Request

Header is required for the message.

Header Type	Description
WS Security	Web Service Security

The elements used in the request message body.

Element	Description	Required
-RMTDAC	Retrieve Diversion Acknowledgement	<input checked="" type="checkbox"/>
--MessageSelector	The Message Identification of the Diversion Acknowledgement to be retrieved	<input checked="" type="checkbox"/>

Soap request example

```

<env:Envelope xmlns:env="http://schemas.xmlsoap.org/soap/envelope/"
xmlns:edim="http://ces.gov.mt/ics/schemas/ediMessages">
  <env:Header>
    <wsse:Security xmlns:wsse="http://docs.oasis-open.org/wss/2004/01/oasis-200401-wss-
wssecurity-secext-1.0.xsd">
      <wsse:UsernameToken>
        <wsse:Username>username</wsse:Username>
        <wsse:Password>password</wsse:Password>
      </wsse:UsernameToken>
    </wsse:Security>
  </env:Header>
  <env:Body>
    <edim:RTMDAC>
      <edim:MesSenMES3>Sender</edim:MesSenMES3>
      <edim:MesRecMES6>NICA.MT</edim:MesRecMES6>
      <edim:DatOfPreMES9>090101</edim:DatOfPreMES9>
      <edim:TimOfPreMES10>0000</edim:TimOfPreMES10>
      <edim:MesIdeMES19>MT000000000000</edim:MesIdeMES19>
      <edim:MesTypMES20>RTMEAC</edim:MesTypMES20>
      <edim:MessageSelector>MT000000000001</edim:MessageSelector>
    </edim:RTMDAC>
  </env:Body>
</env:Envelope>

```

07.4.13.2 Soap Response

No headers are return by the message.

Elements used in the response message body.

Element	Description
-IE325	Diversion Acknowledgment

Soap response example

```
<env:Envelope xmlns:env="http://schemas.xmlsoap.org/soap/envelope/"
xmlns:xsd="http://www.w3.org/2001/XMLSchema" xmlns:xsi="http://www.w3.org/2001/XMLSchema-
instance" xmlns:ns0="http://ces.gov.mt/ics/schemas/ediMessages">
  <env:Body>
    <CC325A xmlns="http://ces.gov.mt/ics/schemas/CC325A">
      <MesSenMES3>Sender</MesSenMES3>
      <MesRecMES6>Recipient</MesRecMES6>
      <DatOfPreMES9>090101</DatOfPreMES9>
      <TimOfPreMES10>0000</TimOfPreMES10>
      <MesIdeMES19>MT000000000002</MesIdeMES19>
      <MesTypMES20>RMMRES</MesTypMES20>
      <CorIdeMES25>MT000000000000</CorIdeMES25>
      ... ..
    </CC325A>
  </env:Body>
</env:Envelope>
```

07.4.13.3 Error Response

When errors occur, an Operation Not Acknowledge message (OPRPAK) is returned. This response message does not contain a header section.

The elements used in the response message body.

Element	Description
-OPRPAK	Operation Not Acknowledgement
--Operation Failure	Information about failing the operation
--- Error Type	Type of error occurred
--- Error Message	Message error occurred

Soap response example

```
<env:Envelope xmlns:env="http://schemas.xmlsoap.org/soap/envelope/"
xmlns:xsd="http://www.w3.org/2001/XMLSchema" xmlns:xsi="http://www.w3.org/2001/XMLSchema-
instance" xmlns:ns0="http://ces.gov.mt/ics/schemas/ediMessages">
  <env:Body>
    <env:Fault xsi:type="env:Fault">
      <faultcode>env:Server</faultcode>
      <faultstring xsi:nil="1"/>
      <detail>
        <ns0:OPRPAK>
          <ns0:MesSenMES3>Sender</ns0:MesSenMES3>
          <ns0:MesRecMES6>Recipient</ns0:MesRecMES6>
          <ns0:DatOfPreMES9>090101</ns0:DatOfPreMES9>
          <ns0:TimOfPreMES10>0000</ns0:TimOfPreMES10>
          <ns0:MesIdeMES19>MT000000000001</ns0:MesIdeMES19>
          <ns0:MesTypMES20>OPRPAK</ns0:MesTypMES20>
          <ns0:CorIdeMES25>MT000000000000</ns0:CorIdeMES25>
          <ns0:OperationFailure>
            <ns0:ErrorType>InvalidIEMessageException</ns0:ErrorType>
          </ns0:OperationFailure>
        </ns0:OPRPAK>
      </detail>
    </env:Fault>
  </env:Body>
</env:Envelope>
```

```

    </ns0:OPRNAK>
  </detail>
</env:Fault>
</env:Body>
</env:Envelope>

```

07.4.14 Retrieve Diversion Rejection

Web Service Name: RetrieveDivertRejection

The web service will be used by traders to retrieve the rejection response messages from the SD system. The requested message is a retrieve single Diversion Rejection message (RTMDRJ). As a reply the web service will return the Diversion Rejection message (IE324) or an operation not acknowledged message (OPRNAK) in case of errors.

07.4.14.1 Soap Request

Header is required for the message.

Header Type	Description
WS Security	Web Service Security

The elements used in the request message body.

Element	Description	Required
-RMTDRJ	Retrieve Diversion Rejection	<input checked="" type="checkbox"/>
--MessageSelector	The Message Identification of the Diversion Rejection to be retrieved	<input checked="" type="checkbox"/>

Soap request example

```

<env:Envelope xmlns:env="http://schemas.xmlsoap.org/soap/envelope/"
xmlns:edim="http://ces.gov.mt/ics/schemas/ediMessages">
  <env:Header>
    <wsse:Security xmlns:wsse="http://docs.oasis-open.org/wss/2004/01/oasis-200401-wss-
wssecurity-secext-1.0.xsd">
      <wsse:UsernameToken>
        <wsse:Username>username</wsse:Username>
        <wsse:Password>password</wsse:Password>
      </wsse:UsernameToken>
    </wsse:Security>
  </env:Header>
  <env:Body>
    <edim:RTMDRJ>
      <edim:MesSenMES3>Sender</edim:MesSenMES3>
      <edim:MesRecMES6>NICA.MT</edim:MesRecMES6>
      <edim:DatOfPreMES9>090101</edim:DatOfPreMES9>
      <edim:TimOfPreMES10>0000</edim:TimOfPreMES10>
      <edim:MesIdeMES19>MT000000000000</edim:MesIdeMES19>
      <edim:MesTypMES20>RTMEAC</edim:MesTypMES20>
      <edim:MessageSelector>MT000000000001</edim:MessageSelector>
    </edim:RTMDRJ>
  </env:Body>
</env:Envelope>

```

07.4.14.2 Soap Response

No headers are return by the message.

Elements used in the response message body.

Element	Description
-IE324	Diversion Rejection

Soap response example

```
<env:Envelope xmlns:env="http://schemas.xmlsoap.org/soap/envelope/"
xmlns:xsd="http://www.w3.org/2001/XMLSchema" xmlns:xsi="http://www.w3.org/2001/XMLSchema-
instance" xmlns:ns0="http://ces.gov.mt/ics/schemas/ediMessages">
  <env:Body>
    <CC324A xmlns="http://ces.gov.mt/ics/schemas/CC324A">
      <MesSenMES3>Sender</MesSenMES3>
      <MesRecMES6>Recipient</MesRecMES6>
      <DatOfPreMES9>090101</DatOfPreMES9>
      <TimOfPreMES10>0000</TimOfPreMES10>
      <MesIdeMES19>MT000000000002</MesIdeMES19>
      <MesTypMES20>RMMRES</MesTypMES20>
      <CorIdeMES25>MT000000000000</CorIdeMES25>
      ... ..
    </CC324A>
  </env:Body>
</env:Envelope>
```

07.4.14.3 Error Response

When errors occur, an Operation Not Acknowledge message (OPRNAK) is returned. This response message does not contain a header section.

The elements used in the response message body.

Element	Description
-OPRNAK	Operation Not Acknowledgement
--Operation Failure	Information about failing the operation
--- Error Type	Type of error occurred
--- Error Message	Message error occurred

Soap response example

```
<env:Envelope xmlns:env="http://schemas.xmlsoap.org/soap/envelope/"
xmlns:xsd="http://www.w3.org/2001/XMLSchema" xmlns:xsi="http://www.w3.org/2001/XMLSchema-
instance" xmlns:ns0="http://ces.gov.mt/ics/schemas/ediMessages">
  <env:Body>
    <env:Fault xsi:type="env:Fault">
      <faultcode>env:Server</faultcode>
      <faultstring xsi:nil="1"/>
      <detail>
        <ns0:OPRNAK>
          <ns0:MesSenMES3>Sender</ns0:MesSenMES3>
          <ns0:MesRecMES6>Recipient</ns0:MesRecMES6>
          <ns0:DatOfPreMES9>090101</ns0:DatOfPreMES9>
          <ns0:TimOfPreMES10>0000</ns0:TimOfPreMES10>
          <ns0:MesIdeMES19>MT000000000001</ns0:MesIdeMES19>
          <ns0:MesTypMES20>OPRACK</ns0:MesTypMES20>
          <ns0:CorIdeMES25>MT000000000000</ns0:CorIdeMES25>
          <ns0:OperationFailure>
            <ns0:ErrorType>InvalidIEMessageException</ns0:ErrorType>
          </ns0:OperationFailure>
        </ns0:OPRNAK>
      </detail>
    </env:Fault>
  </env:Body>
</env:Envelope>
```

```
</env:Body>
</env:Envelope>
```

07.4.15 Retrieve Arrival Notification Validation

Web Service Name : RetrieveARN Validation

The web service will be used by traders to retrieve the acknowledgment response messages from the SD system. The requested message is a retrieve single ARN Validation message (RTMARNVL). As a reply the web service will return the ARN Validation message (IE348) or an operation not acknowledged message (OPRNAK) in case of errors.

07.4.15.1 Soap Request

Header is required for the message.

Header Type	Description
WS Security	Web Service Security

The elements used in the request message body.

Element	Description	Required
- RTMARNVL	Retrieve ARN Validation	<input checked="" type="checkbox"/>
--MessageSelector	The Message Identification of the Arrival Validation to be retrieved	<input checked="" type="checkbox"/>

Soap request example

```
<env:Envelope xmlns:env="http://schemas.xmlsoap.org/soap/envelope/"
xmlns:edim="http://ces.gov.mt/ics/schemas/ediMessages">
  <env:Header>
    <wsse:Security xmlns:wsse="http://docs.oasis-open.org/wss/2004/01/oasis-200401-wss-
wssecurity-secext-1.0.xsd">
      <wsse:UsernameToken>
        <wsse:Username>username</wsse:Username>
        <wsse:Password>password</wsse:Password>
      </wsse:UsernameToken>
    </wsse:Security>
  </env:Header>
  <env:Body>
    <edim:RTMARNVL>
      <edim:MesSenMES3>Sender</edim:MesSenMES3>
      <edim:MesRecMES6>NICA.MT</edim:MesRecMES6>
      <edim:DatOfPreMES9>090101</edim:DatOfPreMES9>
      <edim:TimOfPreMES10>0000</edim:TimOfPreMES10>
      <edim:MesIdeMES19>MT000000000000</edim:MesIdeMES19>
      <edim:MesTypMES20>RTMEAC</edim:MesTypMES20>
      <edim:MessageSelector>MT000000000001</edim:MessageSelector>
    </edim:RTMARNVL>
  </env:Body>
</env:Envelope>
```


07.4.15.2 Soap Response

No headers are return by the message.

Elements used in the response message body.

Element	Description
-IE348	ARN Validation

Soap response example

```
<env:Envelope xmlns:env="http://schemas.xmlsoap.org/soap/envelope/"
xmlns:xsd="http://www.w3.org/2001/XMLSchema" xmlns:xsi="http://www.w3.org/2001/XMLSchema-
instance" xmlns:ns0="http://ces.gov.mt/ics/schemas/ediMessages">
  <env:Body>
    <CC348A xmlns="http://ces.gov.mt/ics/schemas/CC348A">
      <MesSenMES3>Sender</MesSenMES3>
      <MesRecMES6>Recipient</MesRecMES6>
      <DatOfPreMES9>090101</DatOfPreMES9>
      <TimOfPreMES10>0000</TimOfPreMES10>
      <MesIdeMES19>MT000000000002</MesIdeMES19>
      <MesTypMES20>RMMRES</MesTypMES20>
      <CorIdeMES25>MT000000000000</CorIdeMES25>
      ... ..
    </CC348A>
  </env:Body>
</env:Envelope>
```

07.4.15.3 Error Response

When errors occur, an Operation Not Acknowledge message (OPRNAK) is returned. This response message does not contain a header section.

The elements used in the response message body.

Element	Description
-OPRNAK	Operation Not Acknowledgement
--Operation Failure	Information about failing the operation
--- Error Type	Type of error occurred
--- Error Message	Message error occurred

Soap response example

```
<env:Envelope xmlns:env="http://schemas.xmlsoap.org/soap/envelope/"
xmlns:xsd="http://www.w3.org/2001/XMLSchema" xmlns:xsi="http://www.w3.org/2001/XMLSchema-
instance" xmlns:ns0="http://ces.gov.mt/ics/schemas/ediMessages">
  <env:Body>
    <env:Fault xsi:type="env:Fault">
      <faultcode>env:Server</faultcode>
      <faultstring xsi:nil="1"/>
      <detail>
        <ns0:OPRNAK>
          <ns0:MesSenMES3>Sender</ns0:MesSenMES3>
          <ns0:MesRecMES6>Recipient</ns0:MesRecMES6>
          <ns0:DatOfPreMES9>090101</ns0:DatOfPreMES9>
          <ns0:TimOfPreMES10>0000</ns0:TimOfPreMES10>
          <ns0:MesIdeMES19>MT000000000001</ns0:MesIdeMES19>
          <ns0:MesTypMES20>OPRACK</ns0:MesTypMES20>
          <ns0:CorIdeMES25>MT000000000000</ns0:CorIdeMES25>
          <ns0:OperationFailure>
            <ns0:ErrorType>InvalidIEMessageException</ns0:ErrorType>
          </ns0:OperationFailure>
        </ns0:OPRNAK>
      </detail>
    </env:Fault>
  </env:Body>
</env:Envelope>
```

```
<ns0:ErrorMessage>mt.gov.ces.ics.interop.ie.InvalidIEMessageException</ns0:ErrorMessage>
  </ns0:OperationFailure>
</ns0:OPRNAK>
</detail>
</env:Fault>
</env:Body>
</env:Envelope>
```

07.4.16 Retrieve Advance Notification

Web Service Name: RetrieveAdvanceNotification

The web service will be used by traders to retrieve advance notification messages from the SD system. The requested message is a retrieve single Advance Notification message (RTMANT). As a reply the web service will return the Advance Notification message (IE351) or an operation not acknowledged message (OPRNAK) in case of errors.

07.4.16.1 Soap Request

Header is required for the message.

Header Type	Description
WS Security	Web Service Security

The elements used in the request message body.

Element	Description	Required
-RMTANT	Retrieve Advance Notification	<input checked="" type="checkbox"/>
--MessageSelector	The Message Identification of the Advance Notification to be retrieved	<input checked="" type="checkbox"/>

Soap request example

```
<env:Envelope xmlns:env="http://schemas.xmlsoap.org/soap/envelope/"
  xmlns:edim="http://ces.gov.mt/ics/schemas/ediMessages">
  <env:Header>
    <wsse:Security xmlns:wsse="http://docs.oasis-open.org/wss/2004/01/oasis-200401-wss-
wssecurity-secext-1.0.xsd">
      <wsse:UsernameToken>
        <wsse:Username>username</wsse:Username>
        <wsse:Password>password</wsse:Password>
      </wsse:UsernameToken>
    </wsse:Security>
  </env:Header>
  <env:Body>
    <edim:RTMANT>
      <edim:MesSenMES3>Sender</edim:MesSenMES3>
      <edim:MesRecMES6>NICA.MT</edim:MesRecMES6>
      <edim:DatOfPreMES9>090101</edim:DatOfPreMES9>
      <edim:TimOfPreMES10>0000</edim:TimOfPreMES10>
      <edim:MesIdeMES19>MT000000000000</edim:MesIdeMES19>
      <edim:MesTypMES20>RTMEAC</edim:MesTypMES20>
      <edim:MessageSelector>MT000000000001</edim:MessageSelector>
    </edim:RTMANT>
  </env:Body>
</env:Envelope>
```

07.4.16.2 Soap Response

No headers are return by the message.

Elements used in the response message body.

Element	Description
-IE351	Advance Notification Message

Soap response example

```
<env:Envelope xmlns:env="http://schemas.xmlsoap.org/soap/envelope/"
xmlns:xsd="http://www.w3.org/2001/XMLSchema" xmlns:xsi="http://www.w3.org/2001/XMLSchema-
instance" xmlns:ns0="http://ces.gov.mt/ics/schemas/ediMessages">
  <env:Body>
    <CC351A xmlns="http://ces.gov.mt/ics/schemas/CC351A">
      <MesSenMES3>Sender</MesSenMES3>
      <MesRecMES6>Recipient</MesRecMES6>
      <DatOfPreMES9>090101</DatOfPreMES9>
      <TimOfPreMES10>0000</TimOfPreMES10>
      <MesIdeMES19>MT000000000002</MesIdeMES19>
      <MesTypMES20>RMMRES</MesTypMES20>
      <CorIdeMES25>MT000000000000</CorIdeMES25>
      ... ..
    </CC351A>
  </env:Body>
</env:Envelope>
```

07.4.16.3 Error Response

When errors occur, an Operation Not Acknowledge message (OPRNAK) is returned. This response message does not contain a header section.

The elements used in the response message body.

Element	Description
-OPRNAK	Operation Not Acknowledgement
--Operation Failure	Information about failing the operation
--- Error Type	Type of error occurred
--- Error Message	Message error occurred

Soap response example

```
<env:Envelope xmlns:env="http://schemas.xmlsoap.org/soap/envelope/"
xmlns:xsd="http://www.w3.org/2001/XMLSchema" xmlns:xsi="http://www.w3.org/2001/XMLSchema-
instance" xmlns:ns0="http://ces.gov.mt/ics/schemas/ediMessages">
  <env:Body>
    <env:Fault xsi:type="env:Fault">
      <faultcode>env:Server</faultcode>
      <faultstring xsi:nil="1"/>
      <detail>
        <ns0:OPRNAK>
          <ns0:MesSenMES3>Sender</ns0:MesSenMES3>
          <ns0:MesRecMES6>Recipient</ns0:MesRecMES6>
          <ns0:DatOfPreMES9>090101</ns0:DatOfPreMES9>
          <ns0:TimOfPreMES10>0000</ns0:TimOfPreMES10>
          <ns0:MesIdeMES19>MT000000000001</ns0:MesIdeMES19>
          <ns0:MesTypMES20>OPRACK</ns0:MesTypMES20>
          <ns0:CorIdeMES25>MT000000000000</ns0:CorIdeMES25>
          <ns0:OperationFailure>
            <ns0:ErrorType>InvalidIEMessageException</ns0:ErrorType>
          </ns0:OperationFailure>
        </ns0:OPRNAK>
      </detail>
    </env:Fault>
  </env:Body>
</env:Envelope>
```

07.4.17 Retrieve Exit Summary Acknowledgement

Web Service Name : RetrieveEXSAcknowledgement

The web service will be used by traders to retrieve the acknowledgment response messages from the SD system. The requested message is a retrieve single EXS Acknowledgment message (RTMEXSAC). As a reply the web service will return the EXS Acknowledgement message (IE628) or an operation not acknowledged message (OPRNAK) in case of errors.

07.4.17.1 Soap Request

Header is required for the message.

Header Type	Description
WS Security	Web Service Security

The elements used in the request message body.

Element	Description	Required
-RMTEXSAC	Retrieve EXS Acknowledgement	<input checked="" type="checkbox"/>
--MessageSelector	The Message Identification of the EXS Acknowledgement to be retrieved	<input checked="" type="checkbox"/>

Soap request example

```
<env:Envelope xmlns:env="http://schemas.xmlsoap.org/soap/envelope/"
xmlns:edim="http://ces.gov.mt/ics/schemas/ediMessages">
  <env:Header>
    <wsse:Security xmlns:wsse="http://docs.oasis-open.org/wss/2004/01/oasis-200401-wss-
wssecurity-secext-1.0.xsd">
      <wsse:UsernameToken>
        <wsse:Username>username</wsse:Username>
        <wsse:Password>password</wsse:Password>
      </wsse:UsernameToken>
    </wsse:Security>
  </env:Header>
  <env:Body>
    <edim:RTMEAC>
      <edim:MesSenMES3>Sender</edim:MesSenMES3>
      <edim:MesRecMES6>NICA.MT</edim:MesRecMES6>
      <edim:DatOfPreMES9>090101</edim:DatOfPreMES9>
      <edim:TimOfPreMES10>0000</edim:TimOfPreMES10>
      <edim:MesIdeMES19>MT000000000000</edim:MesIdeMES19>
      <edim:MesTypMES20>RTMEAC</edim:MesTypMES20>
      <edim:MessageSelector>MT000000000001</edim:MessageSelector>
    </edim:RTMEAC>
  </env:Body>
</env:Envelope>
```

07.4.17.2 Soap Response

No headers are return by the message.

Elements used in the response message body.

Element	Description
---------	-------------

-IE628	EXS Acknowledgment
--------	--------------------

Soap response example

```
<env:Envelope xmlns:env="http://schemas.xmlsoap.org/soap/envelope/"
xmlns:xsd="http://www.w3.org/2001/XMLSchema" xmlns:xsi="http://www.w3.org/2001/XMLSchema-
instance" xmlns:ns0="http://ces.gov.mt/ics/schemas/ediMessages">
  <env:Body>
    <CC628A xmlns="http://ces.gov.mt/ics/schemas/CC628A">
      <MesSenMES3>Sender</MesSenMES3>
      <MesRecMES6>Recipient</MesRecMES6>
      <DatOfPreMES9>090101</DatOfPreMES9>
      <TimOfPreMES10>0000</TimOfPreMES10>
      <MesIdeMES19>MT000000000002</MesIdeMES19>
      <MesTypMES20>RMMRES</MesTypMES20>
      <CorIdeMES25>MT000000000000</CorIdeMES25>
      ... ..
    </CC628A>
  </env:Body>
</env:Envelope>
```

07.4.17.3 Error Response

When errors occur, an Operation Not Acknowledge message (OPRNAK) is returned. This response message does not contain a header section.

The elements used in the response message body.

Element	Description
-OPRNAK	Operation Not Acknowledgement
--Operation Failure	Information about failing the operation
--- Error Type	Type of error occurred
--- Error Message	Message error occurred

Soap response example

```
<env:Envelope xmlns:env="http://schemas.xmlsoap.org/soap/envelope/"
xmlns:xsd="http://www.w3.org/2001/XMLSchema" xmlns:xsi="http://www.w3.org/2001/XMLSchema-
instance" xmlns:ns0="http://ces.gov.mt/ics/schemas/ediMessages">
  <env:Body>
    <env:Fault xsi:type="env:Fault">
      <faultcode>env:Server</faultcode>
      <faultstring xsi:nil="1"/>
      <detail>
        <ns0:OPRNAK>
          <ns0:MesSenMES3>Sender</ns0:MesSenMES3>
          <ns0:MesRecMES6>Recipient</ns0:MesRecMES6>
          <ns0:DatOfPreMES9>090101</ns0:DatOfPreMES9>
          <ns0:TimOfPreMES10>0000</ns0:TimOfPreMES10>
          <ns0:MesIdeMES19>MT000000000001</ns0:MesIdeMES19>
          <ns0:MesTypMES20>OPRACK</ns0:MesTypMES20>
          <ns0:CorIdeMES25>MT000000000000</ns0:CorIdeMES25>
          <ns0:OperationFailure>
            <ns0:ErrorType>InvalidIEMessageException</ns0:ErrorType>
          </ns0:OperationFailure>
        </ns0:OPRNAK>
      </detail>
    </env:Fault>
  </env:Body>
</env:Envelope>
```

07.4.18 Retrieve ExitSummary Rejection

Web Service Name: RetrieveEXSRejection

The web service will be used by traders to retrieve the rejection response messages from the SD system. The requested message is a retrieve single EXS Rejection message (RTMEXSRJ). As a reply the web service will return the ENS Rejection message (IE616) or an operation not acknowledged message (OPRNAK) in case of errors.

07.4.18.1 Soap Request

Header is required for the message.

Header Type	Description
WS Security	Web Service Security

The elements used in the request message body.

Element	Description	Required
-RMTEXSRJ	Retrieve EXS Rejection	<input checked="" type="checkbox"/>
--MessageSelector	The Message Identification of the EXS Rejection to be retrieved	<input checked="" type="checkbox"/>

Soap request example

```
<env:Envelope xmlns:env="http://schemas.xmlsoap.org/soap/envelope/"
xmlns:edim="http://ces.gov.mt/ics/schemas/ediMessages">
  <env:Header>
    <wsse:Security xmlns:wsse="http://docs.oasis-open.org/wss/2004/01/oasis-200401-wss-
wssecurity-secext-1.0.xsd">
      <wsse:UsernameToken>
        <wsse:Username>username</wsse:Username>
        <wsse:Password>password</wsse:Password>
      </wsse:UsernameToken>
    </wsse:Security>
  </env:Header>
  <env:Body>
    <edim:RTMERJ>
      <edim:MesSenMES3>Sender</edim:MesSenMES3>
      <edim:MesRecMES6>NICA.MT</edim:MesRecMES6>
      <edim:DatOfPreMES9>090101</edim:DatOfPreMES9>
      <edim:TimOfPreMES10>0000</edim:TimOfPreMES10>
      <edim:MesIdeMES19>MT000000000000</edim:MesIdeMES19>
      <edim:MesTypMES20>RTMEAC</edim:MesTypMES20>
      <edim:MessageSelector>MT000000000001</edim:MessageSelector>
    </edim:RTMERJ>
  </env:Body>
</env:Envelope>
```

07.4.18.2 Soap Response

No headers are return by the message.

Elements used in the response message body.

Element	Description
---------	-------------

-IE616	EXS Rejection
--------	---------------

Soap response example

```
<env:Envelope xmlns:env="http://schemas.xmlsoap.org/soap/envelope/"
xmlns:xsd="http://www.w3.org/2001/XMLSchema" xmlns:xsi="http://www.w3.org/2001/XMLSchema-
instance" xmlns:ns0="http://ces.gov.mt/ics/schemas/ediMessages">
  <env:Body>
    <CC616A xmlns="http://ces.gov.mt/ics/schemas/CC616A">
      <MesSenMES3>Sender</MesSenMES3>
      <MesRecMES6>Recipient</MesRecMES6>
      <DatOfPreMES9>090101</DatOfPreMES9>
      <TimOfPreMES10>0000</TimOfPreMES10>
      <MesIdeMES19>MT000000000002</MesIdeMES19>
      <MesTypMES20>RMMRES</MesTypMES20>
      <CorIdeMES25>MT000000000000</CorIdeMES25>
      ... ..
    </CC616A>
  </env:Body>
</env:Envelope>
```

07.4.18.3 Error Response

When errors occur, an Operation Not Acknowledge message (OPRNAK) is returned. This response message does not contain a header section.

The elements used in the response message body.

Element	Description
-OPRNAK	Operation Not Acknowledgement
--Operation Failure	Information about failing the operation
--- Error Type	Type of error occurred
--- Error Message	Message error occurred

Soap response example

```
<env:Envelope xmlns:env="http://schemas.xmlsoap.org/soap/envelope/"
xmlns:xsd="http://www.w3.org/2001/XMLSchema" xmlns:xsi="http://www.w3.org/2001/XMLSchema-
instance" xmlns:ns0="http://ces.gov.mt/ics/schemas/ediMessages">
  <env:Body>
    <env:Fault xsi:type="env:Fault">
      <faultcode>env:Server</faultcode>
      <faultstring xsi:nil="1"/>
      <detail>
        <ns0:OPRNAK>
          <ns0:MesSenMES3>Sender</ns0:MesSenMES3>
          <ns0:MesRecMES6>Recipient</ns0:MesRecMES6>
          <ns0:DatOfPreMES9>090101</ns0:DatOfPreMES9>
          <ns0:TimOfPreMES10>0000</ns0:TimOfPreMES10>
          <ns0:MesIdeMES19>MT000000000001</ns0:MesIdeMES19>
          <ns0:MesTypMES20>OPRACK</ns0:MesTypMES20>
          <ns0:CorIdeMES25>MT000000000000</ns0:CorIdeMES25>
          <ns0:OperationFailure>
            <ns0:ErrorType>InvalidIEMessageException</ns0:ErrorType>
          </ns0:OperationFailure>
        </ns0:OPRNAK>
      </detail>
    </env:Fault>
  </env:Body>
</env:Envelope>
```

07.4.19 Retrieve Exit Control Notification

Web Service Name: RetrieveExitControlNotification

The web service will be used by traders to retrieve advance notification messages from the SD system. The requested message is a retrieve single Advance Notification message (RTMEDNT). As a reply the web service will return the Exit Control Decision Notification message (IE561) or an operation not acknowledged message (OPRNAK) in case of errors.

07.4.19.1 Soap Request

Header is required for the message.

Header Type	Description
WS Security	Web Service Security

The elements used in the request message body.

Element	Description	Required
-RTMEDNT	Retrieve Exit Control Notification	<input checked="" type="checkbox"/>
--MessageSelector	The Message Identification of the Advance Notification to be retrieved	<input checked="" type="checkbox"/>

Soap request example

```
<env:Envelope xmlns:env="http://schemas.xmlsoap.org/soap/envelope/"
xmlns:edim="http://ces.gov.mt/ics/schemas/ediMessages">
  <env:Header>
    <wsse:Security xmlns:wsse="http://docs.oasis-open.org/wss/2004/01/oasis-200401-wss-
wssecurity-secext-1.0.xsd">
      <wsse:UsernameToken>
        <wsse:Username>username</wsse:Username>
        <wsse:Password>password</wsse:Password>
      </wsse:UsernameToken>
    </wsse:Security>
  </env:Header>
  <env:Body>
    <edim:RTMANT>
      <edim:MesSenMES3>Sender</edim:MesSenMES3>
      <edim:MesRecMES6>NICA.MT</edim:MesRecMES6>
      <edim:DatOfPreMES9>090101</edim:DatOfPreMES9>
      <edim:TimOfPreMES10>0000</edim:TimOfPreMES10>
      <edim:MesIdeMES19>MT000000000000</edim:MesIdeMES19>
      <edim:MesTypMES20>RTMEAC</edim:MesTypMES20>
      <edim:MessageSelector>MT000000000001</edim:MessageSelector>
    </edim:RTMANT>
  </env:Body>
</env:Envelope>
```

07.4.19.2 Soap Response

No headers are return by the message.

Elements used in the response message body.

Element	Description
-IE561	Exit Control Decision Notification Message

Soap response example

```
<env:Envelope xmlns:env="http://schemas.xmlsoap.org/soap/envelope/"
xmlns:xsd="http://www.w3.org/2001/XMLSchema" xmlns:xsi="http://www.w3.org/2001/XMLSchema-
instance" xmlns:ns0="http://ces.gov.mt/ics/schemas/ediMessages">
  <env:Body>
    <CC561A xmlns="http://ces.gov.mt/ics/schemas/CC561A">
      <MesSenMES3>Sender</MesSenMES3>
      <MesRecMES6>Recipient</MesRecMES6>
      <DatOfPreMES9>090101</DatOfPreMES9>
      <TimOfPreMES10>0000</TimOfPreMES10>
      <MesIdeMES19>MT000000000002</MesIdeMES19>
      <MesTypMES20>RMMRES</MesTypMES20>
      <CorIdeMES25>MT000000000000</CorIdeMES25>
      ... ..
    </CC561A>
  </env:Body>
</env:Envelope>
```

07.4.19.3 Error Response

When errors occur, an Operation Not Acknowledge message (OPRNAK) is returned. This response message does not contain a header section.

The elements used in the response message body.

Element	Description
-OPRNAK	Operation Not Acknowledgement
--Operation Failure	Information about failing the operation
--- Error Type	Type of error occurred
--- Error Message	Message error occurred

Soap response example

```
<env:Envelope xmlns:env="http://schemas.xmlsoap.org/soap/envelope/"
xmlns:xsd="http://www.w3.org/2001/XMLSchema" xmlns:xsi="http://www.w3.org/2001/XMLSchema-
instance" xmlns:ns0="http://ces.gov.mt/ics/schemas/ediMessages">
  <env:Body>
    <env:Fault xsi:type="env:Fault">
      <faultcode>env:Server</faultcode>
      <faultstring xsi:nil="1"/>
      <detail>
        <ns0:OPRNAK>
          <ns0:MesSenMES3>Sender</ns0:MesSenMES3>
          <ns0:MesRecMES6>Recipient</ns0:MesRecMES6>
          <ns0:DatOfPreMES9>090101</ns0:DatOfPreMES9>
          <ns0:TimOfPreMES10>0000</ns0:TimOfPreMES10>
          <ns0:MesIdeMES19>MT000000000001</ns0:MesIdeMES19>
          <ns0:MesTypMES20>OPRACK</ns0:MesTypMES20>
          <ns0:CorIdeMES25>MT000000000000</ns0:CorIdeMES25>
          <ns0:OperationFailure>
            <ns0:ErrorType>InvalidIEMessageException</ns0:ErrorType>
          </ns0:OperationFailure>
        </ns0:OPRNAK>
      </detail>
    </env:Fault>
  </env:Body>
</env:Envelope>
```

07.4.20 Retrieve EXS Amendment Acceptance

Web Service Name : RetrieveEXSAmendAcceptance

The web service will be used by traders to retrieve the exit summary declaration amendment acceptance messages from the SD system. The requested message is a retrieve single EXS Amendment Acceptance message (RTMEXSAAC). As a reply the web service will return the EXS Amendment Acceptance message (IE604) or an operation not acknowledged message (OPRNAK) in case of errors.

07.4.20.1 Soap Request

Header is required for the message.

Header Type	Description
WS Security	Web Service Security

The elements used in the request message body.

Element	Description	Required
-RMTEXSAAC	Retrieve EXS Amendment Acceptance	<input checked="" type="checkbox"/>
--MessageSelector	The Message Identification of the Amendment Acceptance message to be retrieved	<input checked="" type="checkbox"/>

Soap request example

```
</soap:Envelope><soap:Envelope xmlns:wsa="http://schemas.xmlsoap.org/ws/2004/08/addressing"
xmlns:wsse="http://docs.oasis-open.org/wss/2004/01/oasis-200401-wss-wssecurity-secext-1.0.xsd"
xmlns:wsu="http://docs.oasis-open.org/wss/2004/01/oasis-200401-wss-wssecurity-utility-1.0.xsd"
xmlns:soap="http://schemas.xmlsoap.org/soap/envelope/">
  <soap:Header>
    <wsse:Security xmlns:wss="http://docs.oasis-open.org/wss/2004/01/oasis-200401-wss-wssecurity-
secext-1.0.xsd">
      <wsse:UsernameToken>
        <wsse:Username>username</wsse:Username>
        <wsse:Password>password</wsse:Password>
      </wsse:UsernameToken>
    </wsse:Security>
  </soap:Header>
  <soap:Body>
    <edim:RTMEXSAAC xmlns:edim="http://ces.gov.mt/ics/schemas/ediMessages">
      <edim:MesSenMES3>username</edim:MesSenMES3>
      <edim:MesRecMES6>NICA.MT</edim:MesRecMES6>
      <edim:DatOfPreMES9>110831</edim:DatOfPreMES9>
      <edim:TimOfPreMES10>0915</edim:TimOfPreMES10>
      <edim:TesIndMES18>1</edim:TesIndMES18>
      <edim:MesIdeMES19>00000001</edim:MesIdeMES19>
      <edim:MesTypMES20>RTMEXSAAC</edim:MesTypMES20>
      <edim:MessageSelector>MT300811000008</edim:MessageSelector>
    </edim:RTMEXSAAC>
  </soap:Body>
</soap:Envelope>
```

07.4.20.2 Soap Response

No headers are return by the message.

Elements used in the response message body.

Element	Description
-IE604	EXS Amendment Acceptance

Soap response example

```
<env:Envelope xmlns:env="http://schemas.xmlsoap.org/soap/envelope/"
xmlns:xsd="http://www.w3.org/2001/XMLSchema" xmlns:xsi="http://www.w3.org/2001/XMLSchema-
instance" xmlns:ns0="http://ces.gov.mt/ics/schemas/ediMessages">
  <env:Body>
    <CC604A xmlns="http://ces.gov.mt/ics/schemas/CC604A">
      <MesSenMES3>NECA.MT</MesSenMES3>
      <MesRecMES6>IT09080660013</MesRecMES6>
      <DatOfPreMES9>110830</DatOfPreMES9>
      <TimOfPreMES10>0923</TimOfPreMES10>
      <TesIndMES18>1</TesIndMES18>
      <MesIdeMES19>MT300811000008</MesIdeMES19>
      <MesTypMES20>CC604A</MesTypMES20>
      <CorIdeMES25>MT201006110804</CorIdeMES25>
      .....
    </CC604A>
  </env:Body>
</env:Envelope>
```

07.4.20.3 Error Response

When errors occur, an Operation Not Acknowledge message (OPRNAK) is returned. This response message does not contain a header section.

The elements used in the response message body.

Element	Description
-OPRNAK	Operation Not Acknowledgement
--Operation Failure	Information about failing the operation
--- Error Type	Type of error occurred
--- Error Message	Message error occurred

Soap response example

```
<env:Envelope xmlns:env="http://schemas.xmlsoap.org/soap/envelope/"
xmlns:xsd="http://www.w3.org/2001/XMLSchema" xmlns:xsi="http://www.w3.org/2001/XMLSchema-
instance" xmlns:ns0="http://ces.gov.mt/ics/schemas/ediMessages">
  <env:Body>
    <env:Fault xsi:type="env:Fault">
      <faultcode>env:Server</faultcode>
      <faultstring xsi:nil="1"/>
      <detail>
        <ns0:OPRNAK>
          <ns0:MesSenMES3>Sender</ns0:MesSenMES3>
          <ns0:MesRecMES6>Recipient</ns0:MesRecMES6>
          <ns0:DatOfPreMES9>110830</ns0:DatOfPreMES9>
          <ns0:TimOfPreMES10>0923</ns0:TimOfPreMES10>
          <ns0:MesIdeMES19>MT000000000001</ns0:MesIdeMES19>
          <ns0:MesTypMES20>OPRACK</ns0:MesTypMES20>
          <ns0:CorIdeMES25>MT000000000000</ns0:CorIdeMES25>
          <ns0:OperationFailure>
            <ns0:ErrorType>InvalidIEMessageException</ns0:ErrorType>
          </ns0:OperationFailure>
        </ns0:OPRNAK>
      </detail>
    </env:Fault>
  </env:Body>
</env:Envelope>
```

07.4.21 Retrieve EXS Amendment Rejection

Web Service Name: RetrieveEXSAmendRejection

The web service will be used by traders to retrieve the rejection response messages from the SD system. The requested message is a retrieve single EXS Amendment Rejection message (RTMEXSARJ). As a reply the web service will return the Amendment Rejection message (IE605) or an operation not acknowledged message (OPRNAK) in case of errors.

07.4.21.1 Soap Request

Header is required for the message.

Header Type	Description
WS Security	Web Service Security

The elements used in the request message body.

Element	Description	Required
-RMTEXSARJ	Retrieve EXS Amendment Rejection	<input checked="" type="checkbox"/>
--MessageSelector	The Message Identification of the EXS Amendment Rejection to be retrieved	<input checked="" type="checkbox"/>

Soap request example

```
</env:Envelope> <soap:Envelope xmlns:wsa="http://schemas.xmlsoap.org/ws/2004/08/addressing"
xmlns:wsse="http://docs.oasis-open.org/wss/2004/01/oasis-200401-wss-wssecurity-secext-1.0.xsd"
xmlns:wsu="http://docs.oasis-open.org/wss/2004/01/oasis-200401-wss-wssecurity-utility-1.0.xsd"
xmlns:soap="http://schemas.xmlsoap.org/soap/envelope/">
  <soap:Header>
    <wsse:Security xmlns:wss="http://docs.oasis-open.org/wss/2004/01/oasis-200401-wss-
wssecurity-secext-1.0.xsd">
      <wsse:UsernameToken>
        <wsse:Username>username</wsse:Username>
        <wsse:Password>password</wsse:Password>
      </wsse:UsernameToken>
    </wsse:Security>
  </soap:Header>
  <soap:Body>
    <edim:RTMEXSARJ xmlns:edim="http://ces.gov.mt/ics/schemas/ediMessages">
      <edim:MesSenMES3>username</edim:MesSenMES3>
      <edim:MesRecMES6>NECA.MT</edim:MesRecMES6>
      <edim:DatOfPreMES9>110831</edim:DatOfPreMES9>
      <edim:TimOfPreMES10>0915</edim:TimOfPreMES10>
      <edim:TesIndMES18>1</edim:TesIndMES18>
      <edim:MesIdeMES19>0000000001</edim:MesIdeMES19>
      <edim:MesTypMES20>RTMEXSARJ</edim:MesTypMES20>
      <edim:MessageSelector>MT300811000013</edim:MessageSelector>
    </edim:RTMEXSARJ>
  </soap:Body>
</soap:Envelope>
```

07.4.21.2 Soap Response

No headers are return by the message.

Elements used in the response message body.

Element	Description
---------	-------------

-IE605	EXS Amendment Rejection
--------	-------------------------

Soap response example

```
<env:Envelope xmlns:env="http://schemas.xmlsoap.org/soap/envelope/"
xmlns:xsd="http://www.w3.org/2001/XMLSchema" xmlns:xsi="http://www.w3.org/2001/XMLSchema-
instance" xmlns:ns0="http://ces.gov.mt/ics/schemas/ediMessages">
  <env:Body>
    <CC605A xmlns="http://ces.gov.mt/ics/schemas/CC605A">
      <MesSenMES3>NECA.MT</MesSenMES3>
      <MesRecMES6>IT09080660013</MesRecMES6>
      <DatOfPreMES9>110830</DatOfPreMES9>
      <TimOfPreMES10>0923</TimOfPreMES10>
      <TesIndMES18>1</TesIndMES18>
      <MesIdeMES19>MT300811000008</MesIdeMES19>
      <MesTypMES20>CC604A</MesTypMES20>
      <CorIdeMES25>MT201006110804</CorIdeMES25>
      ... ..
    </CC605A>
  </env:Body>
</env:Envelope>
```

07.4.21.3 Error Response

When errors occur, an Operation Not Acknowledge message (OPRNAK) is returned. This response message does not contain a header section.

The elements used in the response message body.

Element	Description
-OPRNAK	Operation Not Acknowledgement
--Operation Failure	Information about failing the operation
--- Error Type	Type of error occurred
--- Error Message	Message error occurred

Soap response example

```
<env:Envelope xmlns:env="http://schemas.xmlsoap.org/soap/envelope/"
xmlns:xsd="http://www.w3.org/2001/XMLSchema" xmlns:xsi="http://www.w3.org/2001/XMLSchema-
instance" xmlns:ns0="http://ces.gov.mt/ics/schemas/ediMessages">
  <env:Body>
    <env:Fault xsi:type="env:Fault">
      <faultcode>env:Server</faultcode>
      <faultstring xsi:nil="1"/>
      <detail>
        <ns0:OPRNAK>
          <ns0:MesSenMES3>Sender</ns0:MesSenMES3>
          <ns0:MesRecMES6>Recipient</ns0:MesRecMES6>
          <ns0:DatOfPreMES9>110830</ns0:DatOfPreMES9>
          <ns0:TimOfPreMES10>0923</ns0:TimOfPreMES10>
          <ns0:MesIdeMES19>MT000000000001</ns0:MesIdeMES19>
          <ns0:MesTypMES20>OPRACK</ns0:MesTypMES20>
          <ns0:CorIdeMES25>MT000000000000</ns0:CorIdeMES25>
          <ns0:OperationFailure>
            <ns0:ErrorType>InvalidIEMessageException</ns0:ErrorType>
          </ns0:OperationFailure>
        </ns0:OPRNAK>
      </detail>
    </env:Fault>
  </env:Body>
</env:Envelope>
```

07.5 Asynchronous callback in SDS web services

The communication model provides the trader application, two different ways of consuming response messages, back from SDS. Section 7.4 already illustrated how the trader can browse and retrieve for his pending messages using the SDS webservice. This method needs to be implemented and tested by all trader applicants. Apart from this polling method the trader is also allowed to adopt an asynchronous communication model between his application and the SDS. The notion from the trader perspective is that instead of having to wait for polling, the response messages (both technical and business messages) will be captured and consumed asynchronously. It is emphasized that, the latter approach is only possible if the trader is in possession of a CA digital certificate. The use of digital signed certificate ensures secure communication establishment between the trader application and SDS. Moreover it is required that the trader will provide the address of the endpoint where his application will expect to receive the responses.

For a trader application, to be able to expect the asynchronous message/response back, it should provide callback information (at least the message identity and the reply-to address handler) in the messages, dispatched to SDS. This should be done via WS-Addressing specification, which defines a set of message information headers. The trader application should make use of these headers to provide the callback information in the SOAP header element.

Once the trader message is received at SDS, and processing completes, SDS will use the trader callback endpoint specified via the WS-Addressing <wsa:reply-to property to send its callback message(s) by invoking the appropriate callback web services. Once the trader callback web service receives the callback response it should process the message and reply with an OPRACK in case of a successful operation or else with an OPRNACK in case of failure. This will complete the flow of the communication model as specified in the WS-Addressing WSDL document referenced in appendix D. Failure of the trader application to respond to the callback message with an OPRACK will result that the message involved will be aggregated to the list of pending messages, thus allowing the trader application to still consume it through the use of polling webservice. As a general rule response messages will not be appended to your list of pending messages only if the following conditions are met.

- a) The ENS/Amendment/Diversion/Arrival/EXS message has both ***wsa:MessageID*** and ***wsa:ReplyTo*** attributes
- b) the MESSAGE.MessageIdentification (***/CC3xxA/MesIdMES19***) is unique for your system to system sender account
- c) Asynchronous reply has been successfully consumed by your handler. i.e. The SDS asynchronous message is acknowledged back from the callback handler upon invocation with an OPRACK (confirmation of arrival) message.

In the case that your message content does not meet either of condition (a) or (b), the asynchronous reply is not even attempted. The reply messages are simply added to your list of pending messages to be consumed using browse/retrieve polling web services.

If both condition (a) and condition (b) are OK, each reply message is sent asynchronously. However if the trader's callback handler is down or else if it fails to acknowledge back the SDS asynchronous response with an OPRACK message, in this case the asynchronous attempt will be considered to have failed resulting that the response message will be appended to the list of pending messages, to be consumed later using the other browse/retrieve method.

The following illustrates a CC315A message with callback information.

```

<soapenv:Envelope xmlns:soapenv="http://schemas.xmlsoap.org/soap/envelope/"
xmlns:wsa="http://schemas.xmlsoap.org/ws/2004/08/addressing"
xmlns:cc3="http://ces.gov.mt/ics/schemas/CC315A">
  <soapenv:Header>
    <wsse:Security xmlns:wsse="http://docs.oasis-open.org/wss/2004/01/oasis-200401-wss-
wssecurity-secext-1.0.xsd">
      <wsse:UsernameToken>
        <wsse:Username>username</wsse:Username>
        <wsse:Password>password</wsse:Password>
      </wsse:UsernameToken>
    </wsse:Security>
    <wsa:MessageID>uuid: bb2d874d-a4d3-43b2-8b6f-7930adbf4b01</wsa:MessageID>
    <wsa:ReplyTo><wsa:Address>https://carrier.example</wsa:Address></wsa:ReplyTo>
    <wsa:To>https://icis.gov.mt/summdeclws/edport</wsa:To>
    <wsa:From>sender</wsa:From>
    <wsa:Action>RegisterENSOperation</wsa:Action>
  </soapenv:Header>
  <soapenv:Body>
    <cc3:CC315A>
      .
      .
      .
    </cc3:CC315A>
  </soapenv:Body>
</soapenv:Envelope>

```

The following illustrates examples of two reply messages, OPRACK and CC328A using the message addressing information specified in the soap message listed above. The WS-Addressing <wsa:relatesTo> is used for standard correlation.

```

<soapenv:Envelope xmlns:soapenv="http://schemas.xmlsoap.org/soap/envelope/"
xmlns:wsa="http://schemas.xmlsoap.org/ws/2004/08/addressing">
  <soapenv:Header>
    <wsa:MessageID>uuid:7aa68eb6:1298ba00577:-743b</wsa:MessageID>
    <wsa:RelatesTo soapenv:mustUnderstand="1">uuid:bb2d874d-a4d3-43b2-8b6f-
7930adbf4b01</wsa:RelatesTo>
    <wsa:To soapenv:mustUnderstand="1">https://carrier.example </wsa:To>
    <wsa:Action>urn:RegisterMessageDelivery</wsa:Action>
    <wsa:From>https://icis.gov.mt/summdeclws/edport</wsa:From>
  </soapenv:Header>
  <soapenv:Body>
    <OPRACK xmlns="http://ces.gov.mt/ics/schemas/ediMessages">
      <MesSenMES3>NICA.MT</MesSenMES3>
      <MesRecMES6>username</MesRecMES6>
      <DatOfPreMES9>100701</DatOfPreMES9>
      <TimOfPreMES10>1159</TimOfPreMES10>
      <MesIdeMES19>MT010710000024</MesIdeMES19>
      <MesTypMES20>OPRACK</MesTypMES20>
      <CorIdeMES25>MT201007010004</CorIdeMES25>
      <AcknowledgementType>DELIVERED</AcknowledgementType>
    </OPRACK>
  </soapenv:Body>
</soapenv:Envelope>

```

```

<soapenv:Envelope xmlns:soapenv="http://schemas.xmlsoap.org/soap/envelope/"
xmlns:wsa="http://schemas.xmlsoap.org/ws/2004/08/addressing">
  <soapenv:Header>
    <wsa:MessageID>uuid:7aa68eb6:1298ba00577:-73f0</wsa:MessageID>
    <wsa:RelatesTo soapenv:mustUnderstand="1">uuid:bb2d874d-a4d3-43b2-8b6f-
7930adbf4b01</wsa:RelatesTo>
    <wsa:To soapenv:mustUnderstand="1">https://carrier.example </wsa:To>
    <wsa:Action>urn:RegisterENSackOperation</wsa:Action>
    <wsa:From>https://icis.gov.mt/summdeclws/edport </wsa:From>
  </soapenv:Header>
  <soapenv:Body>
    <CC328A xmlns="http://ces.gov.mt/ics/schemas/CC328A">
      <MesSenMES3>NICA.MT</MesSenMES3>
      <MesRecMES6>MT12345678</MesRecMES6>
      .
      .
      .
    </CC328A>
  </soapenv:Body>
</soapenv:Envelope>

```

If a callback message is consumed successfully from the trader application the message should be acknowledged back from the trader endpoint with an OPRACK message as in the sample below.

```
<env:Envelope xmlns:env="http://schemas.xmlsoap.org/soap/envelope/"
xmlns:xsd="http://www.w3.org/2001/XMLSchema" xmlns:xsi="http://www.w3.org/2001/XMLSchema-
instance" xmlns:ns0="http://ces.gov.mt/ics/schemas/ediMessages">
  <env:Body>
    <ns0:OPRACK>
      <ns0:MesSenMES3>NICA.MT</ns0:MesSenMES3>
      <ns0:MesRecMES6>username</ns0:MesRecMES6>
      <ns0:DatOfPreMES9>100617</ns0:DatOfPreMES9>
      <ns0:TimOfPreMES10>1536</ns0:TimOfPreMES10>
      <ns0:MesIdeMES19>MT170610000218</ns0:MesIdeMES19>
      <ns0:MesTypMES20>OPRACK</ns0:MesTypMES20>
      <ns0:CorIdeMES25>MT201006150025</ns0:CorIdeMES25>
      <ns0:AcknowledgementType>ARRIVED</ns0:AcknowledgementType>
    </ns0:OPRACK>
  </env:Body>
</env:Envelope>
```


08. Trader Registration Procedure

Step 1: Registration of all parties involved in the declarations as an EORI

As a first step any trader interested in making use of the Malta SDS must register as an EORI.

Step 2: Application for the commencement of SDS testing

- The trader should inform Malta Customs which type of access method will use i.e. System-to-System or the Traders Web Interface.
- If system-to-system, testing as in Step 3 has to be performed and the results have to be submitted to Malta Customs for access approval.
- If the Traders Web Interface is selected, the trader should contact Malta Customs to define user logins.
- Even though an access method selection is demanded, a trader is not limited to use only one method but can opt to use both methods.

Step 3: Conformance testing for system to system

- A testing plan has to be defined together with Malta Customs.
- Malta Customs will provide the trader with:
 - A connectivity test with web services and a dummy login;
 - Access to the testing environment to use;
 - Testing documentation and/or a test script to execute.
- Basic tests will include the:
 - Posting of test declarations:
 - Entry Summary Declaration
 - Amendment
 - Diversion
 - Arrival Notification
 - Exit Summary Declaration
 - Exit Summary Declaration Amendment
 - Receipt of replies:
 - Confirmation of arrival
 - Confirmation of delivery
 - ENS Acknowledgment
 - ENS Rejection
 - Amendment Acknowledgment
 - Amendment Rejection
 - Diversion Acknowledgment
 - Diversion Rejection
 - Advances intervention notification
 - Arrival Notification Validation
 - EXS Acknowledgment
 - EXS Rejection

- EXS Amedment Acceptance
- EXS Amendment Rejection
- EXS Control Decision Notification

Step 4: The official access of Summary Declaration through MT

- The trader will present the testing results to Malta Customs. Malta Customs will qualify the trader according to the results presented. If the results are satisfactory to Malta Customs:
 - Malta Customs and the trader will agree on a commencement date;
 - Malta Customs will provide the trader with logins / passwords.
- The trader can start using the system (System to system) on the commencement date agreed.

Note: All legal requirements and agreements that need to be set in place both between the Customs and the respective trader and between the different traders and data owners are considered outside the scope of this document and are therefore being excluded from the process. As a general assumption such legal framework is considered to be already in place.

Appendix A – Messages Definition as per ICS Phase 1/ECS Phase 2 Specifications

The following message definitions are local message definitions. For the definition of the other exchanged messages please refer to the latest update of Design Document for National Import Application (DDNIA) and Design Document for National Export Application (DDNXA)

OPRNAK: Operation Failure Notification (E_OPER_NACK)

MESSAGE	1x	R	
TYPE	1x	R	

MESSAGE

Message sender	R	an..35		
Message recipient	R	an..35		
Date of preparation	R	n6		
Time of preparation	R	n4		
Priority	O	a1		
Test indicator	O	n1	27	TR9085
Message identification	R	an..14		
Message type	R	an..6	60	
Correlation identifier	D	an..14		TR9181

TYPE

Acknowledgement Type	R	an..9		
----------------------	---	-------	--	--

OPRNAK: Operation Failure Notification (E_OPER_NACK)

MESSAGE	1x	R	
--- OPERATION FAILURE	1x	R	
-----ERROR CAUSE	1x	O	
-----ERROR CAUSE	1x	O	
-----	1x	O	Recursive cause

MESSAGE

Message sender	R	an..35		
Message recipient	R	an..35		
Date of preparation	R	n6		
Time of preparation	R	n4		
Priority	O	a1		
Test indicator	O	n1	27	TR9085
Message identification	R	an..14		
Message type	R	an..6	60	
Correlation identifier	D	an..14		TR9181

---OPERATION FAILURE

Error Type	R	an..		
Error Message	R	an..		

-----ERROR CAUSE

Error Type	R	an..		
Error Message	R	an..		

-----ERROR CAUSE

Error Type	R	an..		
Error Message	R	an..		

BRMREQ: Browse Message Request (E_BRMS_REQ)

MESSAGE	1x	R
RESULT	1x	O
---FILTER	1x	O

MESSAGE

Message sender	R	an..35		
Message recipient	R	an..35		
Date of preparation	R	n6		
Time of preparation	R	n4		
Priority	O	a1		
Test indicator	O	n1	27	TR9085
Message identification	R	an..14		
Message type	R	an..6	60	
Correlation identifier	D	an..14		TR9181

RESULT

Max Results	O	n..3		
-------------	---	------	--	--

---FILTER

Message recipient	R	an..35		
Priority	O	a1		
Message type	R	an..6	60	
Correlation identifier	D	an..14		TR9181
Reference number	D	an..22		RMT001
Document / Reference number	D	an..21		RMT001
Diversion Reference number	D	an..22		RMT001

BRMRES: Browse Message Response (E_BRMS_RES)

MESSAGE	1x	R
RESULT	1x	R
--- MESSAGE INFO	999x	O
----- MESSAGE SUMMARY	1x	R

MESSAGE

Message sender	R	an..35		
Message recipient	R	an..35		
Date of preparation	R	n6		
Time of preparation	R	n4		
Priority	O	a1		
Test indicator	O	n1	27	TR9085
Message identification	R	an..14		
Message type	R	an..6	60	
Correlation identifier	D	an..14		TR9181

RESULT

Number of Messages returned	R	n..3		
-----------------------------	---	------	--	--

---MESSAGE INFO

Message selector	R	an..14		
------------------	---	--------	--	--

-----MESSAGE SUMMARY

Message sender	R	an..35		
----------------	---	--------	--	--

Message recipient	R	an..35		
Date of preparation	R	n6		
Time of preparation	R	n4		
Priority	O	a1		
Test indicator	O	n1	27	TR9085
Message identification	R	an..14		
Message type	R	an..6	60	
Correlation identifier	D	an..14		TR9181
Reference number	D	an..22		RMT001
Document / Reference number	D	an..21		RMT001
Diversion Reference number	D	an..22		RMT001

RMMREQ: Retrieve Multiple Messages Request (E_RTMM_REQ)

MESSAGE	1x	R
RESULT	1x	R
--- MESSAGE INFO	999x	R

MESSAGE

Message sender	R	an..35		
Message recipient	R	an..35		
Date of preparation	R	n6		
Time of preparation	R	n4		
Priority	O	a1		
Test indicator	O	n1	27	TR9085
Message identification	R	an..14		
Message type	R	an..6	60	
Correlation identifier	D	an..14		TR9181

RESULT

Number of Messages returned	R	n..3
-----------------------------	---	------

---MESSAGE INFO

Message selector	R	an..14
------------------	---	--------

RMMRES: Retrieve Multiple Messages Response (E_RTMM_RES)

MESSAGE	1x	R
--- DELIVERED MESSAGE	999x	R

MESSAGE

Message sender	R	an..35		
Message recipient	R	an..35		
Date of preparation	R	n6		
Time of preparation	R	n4		
Priority	O	a1		
Test indicator	O	n1	27	TR9085
Message identification	R	an..14		
Message type	R	an..6	60	
Correlation identifier	D	an..14		TR9181

---DELIVERED MESSAGE

Message selector	R	an..14
Message Data	R	xml

RTMEAC: Retrieve Entry Summary Declaration Acknowledgement (E_RET_M_EAC)

MESSAGE	1x	R		
RESULT	1x	R		
--- MESSAGE INFO	1x	R		

MESSAGE

Message sender	R	an..35		
Message recipient	R	an..35		
Date of preparation	R	n6		
Time of preparation	R	n4		
Priority	O	a1		
Test indicator	O	n1	27	TR9085
Message identification	R	an..14		
Message type	R	an..6	60	
Correlation identifier	D	an..14		TR9181

RESULT

Number of Messages returned	R	n..3		
-----------------------------	---	------	--	--

---MESSAGE INFO

Message selector	R	an..14		
------------------	---	--------	--	--

RTMERJ: Retrieve Entry Summary Declaration Rejection (E_RET_M_ERJ)

MESSAGE	1x	R		
RESULT	1x	R		
--- MESSAGE INFO	1x	R		

MESSAGE

Message sender	R	an..35		
Message recipient	R	an..35		
Date of preparation	R	n6		
Time of preparation	R	n4		
Priority	O	a1		
Test indicator	O	n1	27	TR9085
Message identification	R	an..14		
Message type	R	an..6	60	
Correlation identifier	D	an..14		TR9181

RESULT

Number of Messages returned	R	n..3		
-----------------------------	---	------	--	--

---MESSAGE INFO

Message selector	R	an..14		
------------------	---	--------	--	--

RTMAAC: Retrieve Amendment Acknowledgement (E_RETM_AAC)

MESSAGE	1x	R
RESULT	1x	R
--- MESSAGE INFO	1x	R

MESSAGE

Message sender	R	an..35	
Message recipient	R	an..35	
Date of preparation	R	n6	
Time of preparation	R	n4	
Priority	O	a1	
Test indicator	O	n1	27 TR9085
Message identification	R	an..14	
Message type	R	an..6	60
Correlation identifier	D	an..14	TR9181

RESULT

Number of Messages returned	R	n..3
-----------------------------	---	------

---MESSAGE INFO

Message selector	R	an..14
------------------	---	--------

RTMARJ: Retrieve Amendment Rejection (E_RETM_ARJ)

MESSAGE	1x	R
RESULT	1x	R
--- MESSAGE INFO	1x	R

MESSAGE

Message sender	R	an..35	
Message recipient	R	an..35	
Date of preparation	R	n6	
Time of preparation	R	n4	
Priority	O	a1	
Test indicator	O	n1	27 TR9085
Message identification	R	an..14	
Message type	R	an..6	60
Correlation identifier	D	an..14	TR9181

RESULT

Number of Messages returned	R	n..3
-----------------------------	---	------

---MESSAGE INFO

Message selector	R	an..14
------------------	---	--------

RTMDAC: Retrieve Diversion Acknowledgement (E_RETM_DAC)

MESSAGE	1x	R
RESULT	1x	R
--- MESSAGE INFO	1x	R

MESSAGE

Message sender	R	an..35
----------------	---	--------

Message recipient	R	an..35		
Date of preparation	R	n6		
Time of preparation	R	n4		
Priority	O	a1		
Test indicator	O	n1	27	TR9085
Message identification	R	an..14		
Message type	R	an..6	60	
Correlation identifier	D	an..14		TR9181
RESULT				
Number of Messages returned	R	n..3		
---MESSAGE INFO				
Message selector	R	an..14		

RTMDRJ: Retrieve Diversion Rejection (E_RETMDRJ)

MESSAGE	1x	R
RESULT	1x	R
--- MESSAGE INFO	1x	R

MESSAGE

Message sender	R	an..35		
Message recipient	R	an..35		
Date of preparation	R	n6		
Time of preparation	R	n4		
Priority	O	a1		
Test indicator	O	n1	27	TR9085
Message identification	R	an..14		
Message type	R	an..6	60	
Correlation identifier	D	an..14		TR9181
RESULT				
Number of Messages returned	R	n..3		
---MESSAGE INFO				
Message selector	R	an..14		

RTMARNVL: Retrieve Arrival Notification Validation (E_RETARNVL)

MESSAGE	1x	R
RESULT	1x	R
--- MESSAGE INFO	1x	R

MESSAGE

Message sender	R	an..35		
Message recipient	R	an..35		
Date of preparation	R	n6		
Time of preparation	R	n4		
Priority	O	a1		
Test indicator	O	n1	27	TR9085
Message identification	R	an..14		
Message type	R	an..6	60	
Correlation identifier	D	an..14		TR9181
RESULT				
Number of Messages returned	R	n..3		

---MESSAGE INFO

Message selector R

RTMANT: Retrieve Advance Notification (E_RETM_ANT)

MESSAGE	1x	R		
RESULT	1x	R		
--- MESSAGE INFO	1x	R		

MESSAGE

Message sender	R	an..35		
Message recipient	R	an..35		
Date of preparation	R	n6		
Time of preparation	R	n4		
Priority	O	a1		
Test indicator	O	n1	27	TR9085
Message identification	R	an..14		
Message type	R	an..6	60	
Correlation identifier	D	an..14		TR9181

RESULT

Number of Messages returned	R	n..3		
-----------------------------	---	------	--	--

---MESSAGE INFO

Message selector	R	an..14		
------------------	---	--------	--	--

RTMEXSAAC: Retrieve Exit Summary Declaration Acceptance (E_RETM_EXSAAC)

MESSAGE	1x	R		
RESULT	1x	R		
--- MESSAGE INFO	1x	R		

MESSAGE

Message sender	R	an..35		
Message recipient	R	an..35		
Date of preparation	R	n6		
Time of preparation	R	n4		
Priority	O	a1		
Test indicator	O	n1	27	TR9085
Message identification	R	an..14		
Message type	R	an..6	60	
Correlation identifier	D	an..14		TR9181

RESULT

Number of Messages returned	R	n..3		
-----------------------------	---	------	--	--

---MESSAGE INFO

Message selector	R	an..14		
------------------	---	--------	--	--

RTMEXSARJ: Retrieve Exit Summary Declaration Amendment Rejection (E_RETM_EXSARJ)

MESSAGE	1x	R		
RESULT	1x	R		
--- MESSAGE INFO	1x	R		

MESSAGE

Message sender	R	an..35		
Message recipient	R	an..35		
Date of preparation	R	n6		
Time of preparation	R	n4		
Priority	O	a1		
Test indicator	O	n1	27	TR9085
Message identification	R	an..14		
Message type	R	an..6	60	
Correlation identifier	D	an..14		TR9181

RESULT

Number of Messages returned	R	n..3		
-----------------------------	---	------	--	--

---MESSAGE INFO

Message selector	R			
------------------	---	--	--	--

RTMEDNT: Retrieve Exit Control Notification (E_RET_M_EDNT)

MESSAGE	1x	R		
RESULT	1x	R		
--- MESSAGE INFO	1x	R		

MESSAGE

Message sender	R	an..35		
Message recipient	R	an..35		
Date of preparation	R	n6		
Time of preparation	R	n4		
Priority	O	a1		
Test indicator	O	n1	27	TR9085
Message identification	R	an..14		
Message type	R	an..6	60	
Correlation identifier	D	an..14		TR9181

RESULT

Number of Messages returned	R	n..3		
-----------------------------	---	------	--	--

---MESSAGE INFO

Message selector	R	an..14		
------------------	---	--------	--	--

Appendix B: Business Rules Definition for Messages Exchanged

For the complete list of business rules definitions refer to Appendix Q2 of the Design Document for National Import Application (DDNIA) in case of Entry Summary Declaration and of the Design Document for National Export Application (DDNXA) for the Exit Summary Declaration.

Appendix C: Code List as per Messages used in the Web Services

For standard code lists refer to the [SDS webpage](#) under section '**Reference data code lists pertaining to SD**'.

Appendix D: Service Documents

All document service information including the WSDL and XSD definitions is presented in the SD-TradersRequirementDocument-AppendixD-v1.6.6 collection.