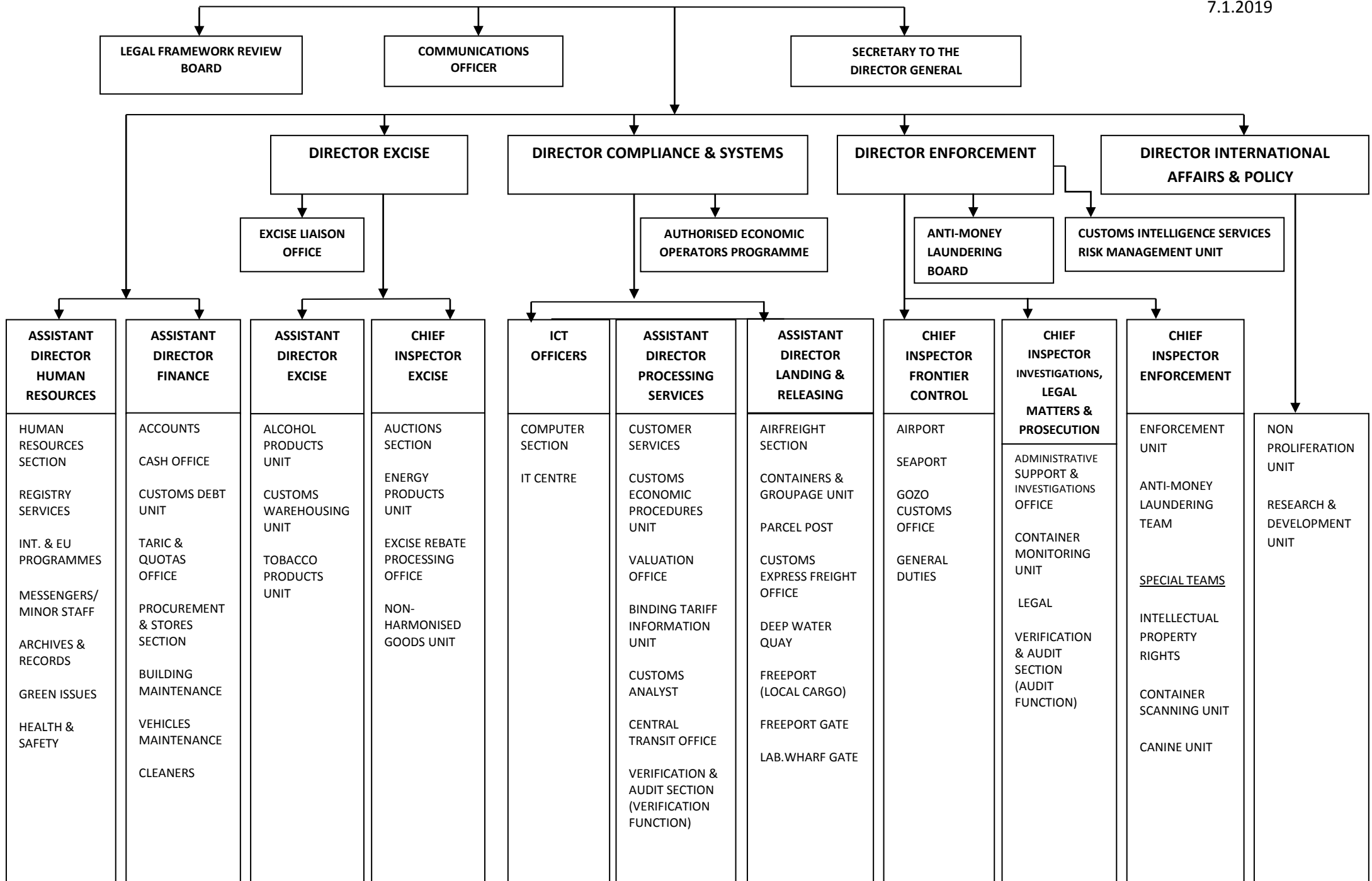


# DIRECTOR GENERAL CUSTOMS

7.1.2019



<b>ASSISTANT DIRECTOR HUMAN RESOURCES</b>	<b>ASSISTANT DIRECTOR FINANCE</b>	<b>ASSISTANT DIRECTOR EXCISE</b>	<b>CHIEF INSPECTOR EXCISE</b>	<b>ICT OFFICERS</b>	<b>ASSISTANT DIRECTOR PROCESSING SERVICES</b>	<b>ASSISTANT DIRECTOR LANDING &amp; RELEASING</b>	<b>CHIEF INSPECTOR FRONTIER CONTROL</b>	<b>CHIEF INSPECTOR INVESTIGATIONS, LEGAL MATTERS &amp; PROSECUTION</b>	<b>CHIEF INSPECTOR ENFORCEMENT</b>	
HUMAN RESOURCES SECTION	ACCOUNTS	ALCOHOL PRODUCTS UNIT	AUCTIONS SECTION	COMPUTER SECTION	CUSTOMER SERVICES	AIRFREIGHT SECTION	AIRPORT	ADMINISTRATIVE SUPPORT & INVESTIGATIONS OFFICE	ENFORCEMENT UNIT	NON PROLIFERATION UNIT
REGISTRY SERVICES	CASH OFFICE	CUSTOMS WAREHOUSING UNIT	ENERGY PRODUCTS UNIT	IT CENTRE	CUSTOMS ECONOMIC PROCEDURES UNIT	CONTAINERS & GROUPAGE UNIT	SEAPORT	CONTAINER MONITORING UNIT	ANTI-MONEY LAUNDERING TEAM	RESEARCH & DEVELOPMENT UNIT
INT. & EU PROGRAMMES	CUSTOMS DEBT UNIT	TOBACCO PRODUCTS UNIT	EXCISE REBATE PROCESSING OFFICE		VALUATION OFFICE	PARCEL POST	GOZO CUSTOMS OFFICE	LEGAL	<u>SPECIAL TEAMS</u>	
MESSENGERS/MINOR STAFF	TARIC & QUOTAS OFFICE		NON-HARMONISED GOODS UNIT		BINDING TARIFF INFORMATION UNIT	CUSTOMS EXPRESS FREIGHT OFFICE	GENERAL DUTIES	VERIFICATION & AUDIT SECTION (AUDIT FUNCTION)	INTELLECTUAL PROPERTY RIGHTS	
ARCHIVES & RECORDS	PROCUREMENT & STORES SECTION				CUSTOMS ANALYST	DEEP WATER QUAY			CONTAINER SCANNING UNIT	
GREEN ISSUES	BUILDING MAINTENANCE				CENTRAL TRANSIT OFFICE	FREEPORT (LOCAL CARGO)			CANINE UNIT	
HEALTH & SAFETY	VEHICLES MAINTENANCE				VERIFICATION & AUDIT SECTION (VERIFICATION FUNCTION)	FREEPORT GATE				
	CLEANERS					LAB.WHARF GATE				